

PRESIDENT'S MESSAGE

Jason Bowes, E.I.T.

Imagine climbing aboard a 200 pound piece of concrete and paddling it across a 72-acre man-made lake that was just filled after being drained for nearly seven years. This is exactly what members of the Penn State University's Concrete Canoe team will be doing alongside students from other Universities at the 2015 Mid-Atlantic Region Concrete Canoe Competition on April 12, 2015.

The Concrete Canoe Competition is part of the 2015 ASCE Mid-Atlantic Student Conference, hosted by the Penn State University Park Student Chapter from April 10-12. The Mid-Atlantic Conference is one of 18 regional student conferences held across the country each April. In addition to the Concrete Canoe Competition, the conference will play host to the Mid-Atlantic Region ASCE/AISC Steel Bridge Competition and the Geo-Wall Challenge Competition. In the Steel Bridge Competition, students are tasked with designing, fabricating, erecting and load testing a steel bridge, while the Geo-Wall Challenge Competition involves constructing a small scale mechanically stabilized earth (MSE) retaining wall system with sand backfill and paper reinforcements. Other conference activities include a business meeting, technical paper presentations and a social for all participants.

Winning schools from each competition are invited to compete on a National level against winners from other regions. Prizes for winning teams

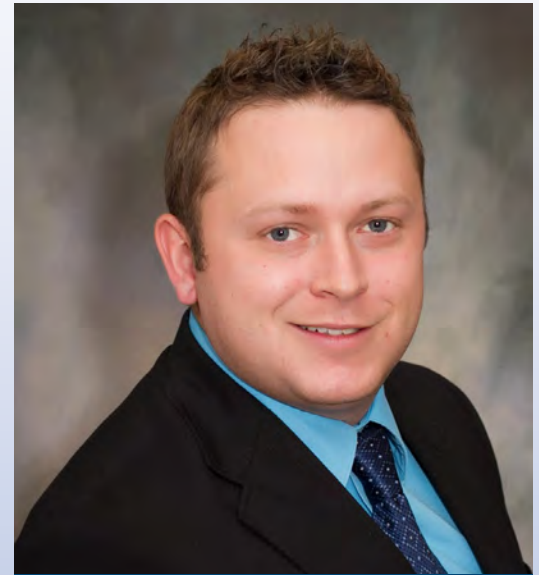
on the National level include scholarships, cash sums, trophies and serious bragging rights! For more information on the Concrete Canoe and Steel Bridge Competitions, please visit www.asce.org/concrete_canoe/ and www.aisc.org/content.aspx?id=780.

Additional information on the annual ASCE Regional Student Conferences can be found at www.asce.org/student_conferences/.

The ASCE Central PA Section is proud to support the Mid-Atlantic Conference by providing Section members to judge the individual competitions. A special thanks goes out to the host schools, organizers, judges and supporters who make these competitions possible for students.

On the subject of Student Chapters, the Central PA Section was pleased to recognize the Messiah College Student Chapter as the fifth Central PA Student Chapter at our February dinner meeting. The Messiah College Chapter will officially be recognized by ASCE National as an individual Chapter later this year, but the Central PA Section has already begun working with the students and their Faculty Advisor, Dr. Brian Swartz, to plan events and develop a solid relationship between the Chapters. At the February dinner meeting, Dr. Swartz gave a brief introduction of the Student Chapter and their goals to meeting attendees. The Central PA Section is providing the Messiah College Student Chapter with \$5,000 in

(Continued on page 2.)



JASON BOWES, E.I.T.
President
Central PA ASCE Section
2014-2015

SECTION OFFICERS

Jason Bowes, E.I.T.
President
(717) 691-2517

Christopher Smith, PE
President-Elect
(717) 790-9565 ext. 481

Joe Eberly, P.E.
Vice President
(717) 846-4660

Kerry Henneberger, PE
Secretary
(717) 541-4026

Paul J. Lewis, PE
Treasurer
(717) 763-7211 x2371

April Section Dinner Meeting:
4/8/15
Social Hour begins at 5:30pm
Dinner: 6:30pm, Speaker: 7:30pm
Speaker: Ned Pelger, P.E., of
Pelger Engineering and Construction, Inc.,
will present the Rock Lititz project.

Location: The Park Inn by Radisson
Harrisburg West, 5401 Carlisle Pike,
Mechanicsburg, PA 17050

Continued from cover.

startup support to help them hit the ground running.

For more information on the Messiah College Civil Engineering Program, please visit

www.messiah.edu/civil-engineering-concentration-pennsylvania.

Student involvement should be an essential part of any ASCE Section or Branch. These students are our future members and leaders. Involvement in ASCE is often part of their transformation from civil engineering student to civil engineering professional. The Central PA Section is proud to support and be engaged with each of our Student Chapters. The Section strives to help put Student Chapter Practitioner Advisors in place that are both connected and dedicated to the betterment of each Chapter. Speaking of those dedicated to our Student Chapters, I would like to congratulate Christopher Beauregard, P.E., M.ASCE, the 2015 Central Pennsylvania Engineer's Week Council (CPEWC) John H. McCormick Educational

Outreach Award winner. Chris was nominated through ASCE for his work as the Section's Director of Student Activities. In addition, Chris serves as a Practitioner Advisor to the Penn State Harrisburg and Penn College of Technology Student Chapters and was the Section's President from 2011-2012.

The Central PA Section is pleased to have three members receiving CPEWC awards this year. Thomas Imholte, P.E., M.ASCE and Rick Hoover, PG, M.ASCE, have been selected for the Engineer of the Year and Technical Achievement Awards, respectively. Tom currently serves as an ASCE Region 2 Governor and the Geotechnical Committee Chair for the Central PA Section. He is also an ASCE Central PA Past-President. Rick is an active ASCE member with a strong background in Geophysics. Congratulations to each of this year's award winners and thank you for your dedication to ASCE Central PA.

Finally, I hope that you took a moment to pat yourself on the

back during National Engineer's Week, celebrated February 22-28. We, as civil engineers, are responsible for ensuring the safety and well-being of our citizens on a day to day basis. If you did not have a chance to participate in National Engineer's Week, don't fret; Infrastructure Week is right around the corner on May 11-15, 2015!

Jason Bowes
ASCE Central PA President

WELCOME NEW MEMBERS

Ryan Ahn
Kate Aulenbach
Edward Barben
Matt Bechtel
William Bingham
Gordon Brown
Matthew Carroll
Nathaniel Clymer
Rebecca Edwards
Emily Fask
Luke Flowers
Bachir Hamadeh
Matthew Henry
Adam Hockenberry
Robert Hopkins
Anthony Jellen
Keith Kassees
Timothy Kerley

Hu Kim
Roxanne Li
Aaron McGinty
Steven Marquiss
Stephanie Merenbach
Joseph Moussa
Joseph Nippes
Andrew Orlovsky
Maximilian Ororbia
David Pinyot
Gregg Saunders
Erik Schlenker
John Skovira
Jason Taylor
Jaime Vasquez
Geoffrey Warholak
Wagdy Wassef

ASCE NAMES PENN STATE UNIVERSITY STUDENT ONE OF THE “NEW FACES OF CIVIL ENGINEERING” IN 2015

By Christopher W. Smith, P.E. – President-Elect

After hearing about Bridges to Prosperity (B2P), a nonprofit organization that builds pedestrian bridges in third-world countries to provide isolated communities access to basic needs, Jennifer Kearney, S.M.ASCE, decided to not only start a B2P chapter at Penn State University but also lead a 10-member team to Caimital, Panama. “Without the support and encouragement of many ASCE members, our B2P Chapter would not have been able to construct a 250-foot suspended pedestrian bridge in Panama this past summer,” says Kearney, a civil engineering student at PSU who has since gone on to be President of the B2P Penn State Chapter. “I learned many skills through leading a B2P team that I will continue to use in my future as an engineer”, she continued. Aside from ASCE and B2P, Kearney is active with Engineers Without Borders-USA, the Society of Women Engineers (SWE), the American Concrete Institute, the American Institute of Steel

Construction, Tau Beta Pi, and Chi Epsilon. She also serves as Logistics and Funding officer for Penn State’s Steel Bridge team, the overall orientation lead for over 180 first-year students in the Women In Engineering Program, and chairperson for the SWE Stayover, involving more than 70 high school women. Jennifer shares the honor of being a new face of Civil Engineering with nine other colleges students from around the country.

Jennifer was one of four recipients of the 2014 ASCE Central PA Section Student Award that was presented in November 2014. The Central PA Section would like to extend our congratulations to Jennifer for this very prestigious honor.

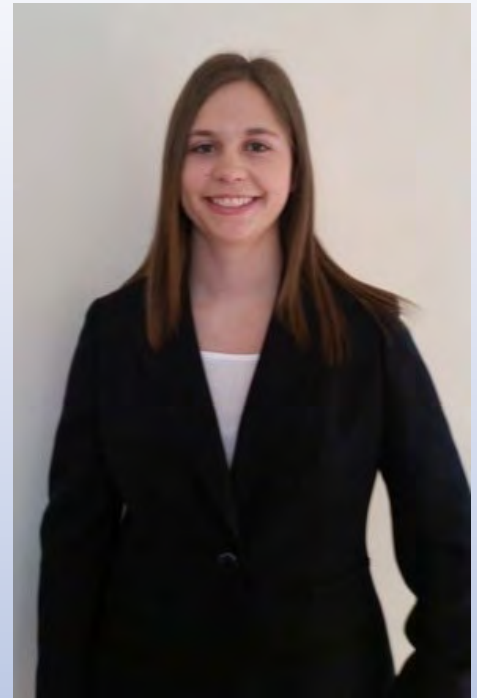


TABLE OF CONTENTS

Younger Member News Update	4
President’s and Governors Forum	5
Social Media	6
2014 Christmas Party	7
Dinner Meeting Updates	8
Geotechnical Section News	9
Multi-region conference	10
R2 Director Spring Article	11
ASCE Convention Save the Date	12
Newsletter Sponsors	13-14
News and Events	15

All new articles for the next newsletter are to be submitted by April 3rd.

YOUNGER MEMBERS GROUP UPDATE

By Austin (Joe) J. Eberly, PE, Younger Member Group President

In the middle of winter it is not hard to think ahead to Spring and warm weather, but first an update of what the YMG has been up to lately.

A January Social was held at Appalachian Brewing Company in Mechanicsburg, which made for a fun evening of food, drink, and conversation.

And a big THANK YOU to all the volunteers for the eWeek/DiscoverE activities at the Whitaker Center that took place in late February. We will look to expand on our efforts next year and reach out to middle and high school programs to connect with more students and bring engineering to them.

In the next newsletter article there will be a recap of the membership benefit/pizza party meeting that is taking place March 3rd at Gannett Fleming in Camp Hill with a social afterwards at Arooga's, also in Camp Hill.

As we transition to Spring and everything that it brings – warmer weather, outdoor activities, an increase in construction, for the YMG we are planning several opportunities to network, socialize, tour, and maybe learn a few things while we do it.

In late March there is a social being planned to take place in the Mechanicsburg area – exact date and location to be determined. For April a possible tour of Exelon's Three Mile Island power plant is being planned – additional information will be sent via constant contact when it is available. Also for April or May there will be the Spring Trash Pickup, which includes a free breakfast before picking up trash, and there is planning for a financial workshop presentation to address some of the issues young engineers face as they transition from students to their careers – student loans, car loans, mortgages, savings, retirement planning, etc. Also for this Spring or Summer we are exploring a volunteer opportunity, possibly partnering with the Susquehanna River Basin Commission, to provide volunteer labor for a cleanup or restoration project.



There are a lot of activities in the planning for the Spring and Summer, so take note as emails come to your inbox and we hope to see you at the upcoming YMG events.

2014 PRESIDENT'S & GOVERNORS FORUM

Submitted by: Jason Bowes, ASCE Central PA President

On September 21st and 22nd nearly 100 ASCE leaders, representing ASCE at various levels across the country, came to ASCE headquarters in Reston, VA to learn about the Society's initiatives at the national level and receive training to help them become more effective leaders. The Presidents and Governors Forum (PGF) allowed Section and Branch Presidents and Regional Governors to get to know fellow Society leaders and key ASCE staff.

Attendees also benefited from hearing about each other's successful initiatives or "best practices", as well as other sessions on communications, government relations, member surveys, Section anniversary celebrations and outreach involving students, younger members and the public.

Attending on behalf of the Central PA Section were Bill Kingston, Younger Member's Group Vice President and Jason Bowes, Section

President. In addition to the PGF happenings, a Younger Member's Leadership Symposium was held in conjunction with the annual event. Several dozen Younger Member's Group leaders from across the country met to discuss topics on leadership and development as well as being effective Younger Member's Group leaders.



Courtesy Jackie Simon

ASCE CENTRAL PA SOCIAL MEDIA- FACEBOOK AND TWITTER

By Austin (Joe) J. Eberly, P.E., Vice President

The ASCE Central PA Section has setup a social media presence. We are on Facebook and Twitter. In addition to emails that you receive through Constant Contact and the Calendar on the website listing the events of the Section, we will be posting announcements on Facebook and tweeting those same announcements on Twitter. If you are on Facebook, join or like the group page or just check it for announcements.

If you are on Twitter, be sure to follow the Section account to receive announcements in your timeline. If you are not on Facebook or Twitter, no problem, you will still receive email announcements and can check the calendar on the website at any time.

The ASCE Central PA Section Facebook group page can be found at:
www.facebook.com/

The ASCE Central PA Section Twitter Account can be found at:

**[https://twitter.com/](https://twitter.com/ASCECentralPA)
ASCECentralPA or
@ASCECentralPA**

Click here to view Career Resources on our Website
www.asce-pa.org/members_jobs.html

Address Change? Questions About ASCE?

If you are an ASCE member, and wish to update your address information, please visit: www.asce.org/myprofile

If you are a member of ASCE, and have questions, please email them to: member@asce.org or centralpa.asce@gmail.com

Questions about the ASCE Central PA Section Newsletter?

Send an email to Barb Mahaffey, Newsletter Editor, at mahaffey.barbara@gmail.com

2014 FAMILY CHRISTMAS PARTY

Submitted by: Jason Bowes, ASCE Central PA President

On Wednesday, December 10, 2014, the Section held its annual Family Christmas Party. The event was attended by nearly 50 people, which included ASCE Central PA Section members, their families, and guests. A traditional Christmas dinner buffet was served, along with appetizers and a limited bar. The event was held at the Park Inn by Radisson on the Carlisle Pike in Mechanicsburg, a new location this year. The new location was well-served, from the Park Inn's festive holiday décor to ample on-site parking. Attendees enjoyed an evening of socializing and catching up with fellow members and friends.

The highlight of the evening was a visit from Saint Nick himself, who stopped by with presents and treats for the kids. He even took the time to sit with each child and review his or her wish list, before moving on for the evening.

Another hit amongst the children was the annual Kid's Coloring Contest, sponsored by the Central PA Younger Member's Group (YMG). Entries were separated into age groups and three \$25 Toys-R-Us gift cards were awarded to the winners. Congratulations to the following three winners, who were chosen by the Central PA YMG:

- (1) Saket Penjendra, Age 4
- (2) Jackson Bowes, Age 6
- (3) Lincoln Govelovich, Age 7

Attendees of the Christmas party were asked to bring a new, unwrapped toy for donation to Toys for Tots. Thank you to everyone who donated toys and helped to make this effort a success. The Central PA Board would also like to thank everyone who helped with the planning of the Christmas Party, as we look forward to another successful event this December!

SEPTEMBER DINNER MEETING FOCUSES ON THE 2014 REPORT CARD FOR PENNSYLVANIA'S INFRASTRUCTURE

By Christopher W. Smith, P.E. – President-Elect

The Section's September Dinner Meeting was held on Wednesday, September 10th on the campus of Central Penn College in the Harrisburg area. The evening began with a networking/social hour, continued with dinner and finished with the featured speaker of the night, Greg Scott, P.E., M.ASCE, a Senior Project Manager at the consulting firm Buchart Horn, Inc. located in Pittsburgh. Greg was a contributing author on the Drinking Water, Wastewater, Transit and Schools sections of the Report Card and presented the grades for the sixteen infrastructure categories including Bridges (D+), Roads (D-), Drinking Water (D) and Dams (C-). Attendees learned the process behind the creation of the report card and what steps can be taken to inform the public of the importance of long-term,

sustained investment in our infrastructure. Attendees earned 1.0 Professional Development Hour towards their Professional License.

More information regarding the 2014 Report Card can be viewed at www.PAReportCard.org.



Pictured: Jason Bowes, Section President, Greg Scott, Speaker and Chris Smith, Section President-Elect



NOVEMBER DINNER MEETING CENTERS ON STUDENT AWARDS AND ENVIRONMENTAL RELATED PRESENTATION

By Christopher W. Smith, P.E. – President-Elect, Student Awards Chair

The November Dinner Meeting was held on Wednesday, November 12th on the campus of Central Penn College in the Harrisburg area. The evening began with a networking/social hour and lead into the presentation of 2014 Student Awards, the 23rd year for these awards. This award was available to students who either attend one of the four colleges/universities within the boundaries of the Central PA Section; Bucknell

University, Penn State - Harrisburg Campus, Penn State - University Park and Penn College of Technology, or reside within our Section's boundaries. This year, a total of fourteen students applied for four \$2,000 awards. The four award winners were Jennifer Kearney, Benjamin Adams, Amir Manafpour and Issa Jafar Ramaji (not present) all whom attend Penn State - University Park. The featured speaker of the night was Kevin Starner,

CEP, a Senior Environmental Scientist and Section 4(f) Specialist from the consulting firm Skelly and Loy in Harrisburg. Kevin's presentation pertained to the Fundamentals of 4(f)/6(f) Compliance. Attendees learned what Section 4(f) is and how it relates to Section 6(f), what qualifies as Section 4(f)/6(f), what documentation must be prepared and how long the documentation process typically takes. In addition, attendees earned 1.0 Professional Development Hour towards their Professional License.



Presenter Kevin Starner



Student Award Winners, Chris Smith and Jason Bowes, Section President

SECTION GEOTECHNICAL NEWS

By Thomas J. Imholte, P.E., Geotechnical Committee Chair & Region 2 Governor

The Geotechnical Committee had a busy last few weeks. First on February 11, 2015 the Section Dinner Meeting had a distinct geotechnical focus as Dr. Jerry Marino, President of Marino Engineering Associates, Inc. (MEA), was the featured speaker. Dr. Marino is an award winning geotechnical engineer who has authored over 90 papers, articles and research publications and a textbook on Earthquake Damage. Jerry spoke about construction over subsidence-prone Karst terrain. This is a common occurrence in Central PA so he had the full attention of the nearly 90 attendees who ranged from curious students to seasoned geotechnical engineers and geologists. Jerry provided a thorough presentation that went through how and why sinkholes are formed and the sometimes extreme countermeasures that are required to provide a safe project.

Then on March 3, 2015 the Geotechnical Committee hosted a webinar on the sustainable and effective use of recycled materials in geotechnical construction. About 20 Section members attended the event that was held at GTS Technologies, Inc in Harrisburg, PA. The presenter was Dr. Craig H. Benson, PE, NAE a Wisconsin Distinguished Professor and Director of Sustainability Research & Education for the University of Wisconsin, Madison.



the recycled material will not have an adverse impact on the environment or users and Wise as ensuring that the recycled material is suitable for the engineering application and provide procedures for appropriate use. A fact that is sometimes surprising is that using low-cost materials like fly ash to replace portions of costly quarried aggregates can also improve the quality of the soil matrix being used for many fill applications.

Dr. Benson's presentation pointed out that safe and wise sustainability measures have a triple effect in that it improves the environment, economics and society overall. He defined Safe as ensuring that



SECTION MEMBERS ATTEND 2015 MULTI-REGION LEADERSHIP CONFERENCE

By Bill Kingston, E.I.T., CFM, Section Younger Member Group Vice-President

The ASCE Multi-Region Leadership Conference (MRLC) was held from January 8th through the 10th in sunny Miami, FL. This annual leadership training event brought together current and rising leaders from the numerous Sections, Branches, Younger Member Groups, and Student Organizations within ASCE Regions 1, 2, 4, and 5 to develop and enhance their leadership skills, receive greater exposure to the organization, operations, and resources of ASCE, and network with peers and colleagues. The conference was hosted by the Miami-Dade Branch of the Florida Section.

Organized under the umbrella of the MRLC, three major Society components met concurrently, as well as individually, during this event: the Workshop for Section and Branch Leaders (WSBL), the Eastern Regional Younger Member Council (ERYMC), and the

Workshops for Student Chapter Leaders (WSCL). Section attendees included Christopher Smith, P.E., Section President-Elect, Duke Slifko, P.E., Section Treasurer-Elect and House and Reception Chair, Christopher Beauregard, P.E., Director of Student Activities, Jack Raudenbush, P.E., Region 2 Governor Bethany Shumaker, E.I.T., Younger Member Group Outreach Chair, and Bill Kingston, E.I.T., Younger Member Group Vice-President. Representatives from Bucknell University and Pennsylvania State University also represented Central Pennsylvania at the WSCL.

Over the course of the event, Section leadership attended lectures presented by high ranking ASCE National staff (including current President Robert Stevens, Ph.D, P.E., President-Elect Mark Woodson, P.E., L.S, D.WRE, and Executive Director Thomas Smith, CAE) and Regional leadership on

topics pertaining to professional and leadership development. Noteworthy presentations included How to Address Confrontational and Difficult Leaders by former ASCE President Blaine Leonard, P.E., D.GE and What Makes a Leader? by ASCE Director-At-Large Michael Loose, P.E. Participants also had the chance to learn about the Port Miami Tunnel Project from Rafael Pina, P.E., Senior Project Manager, Langan Engineering. The project was built through a public-private partnership (PPP or P3) and had a total design and construction cost of nearly \$670 million.

The Section thanks the members who attended for their continued dedication to the society and to the civil engineering profession in general. Next year's MRLC will be held in Pittsburgh, PA on February 12th-13th.



MRLC attendees from the Central PA Section, Bucknell University, and Pennsylvania State University – Photo Courtesy of Christopher Beauregard, P.E.

R2 DIRECTOR SPRING 2015 ARTICLE

by Christopher Menna, P.E., F. ASCE, Region 2 Director

Oh, what a winter we've had. I think that we're almost out of it. It wasn't so much the moisture this time, but rather the bitter cold, ice, and frigid temperatures. Spring is upon us and this is a time to renew, reflect, and move forward.

I am happy to report that our R2 Board did an outstanding job this past Miami at the MRLC. We all participated throughout the conference, with our greatest success culminating in the R2 Breakout. The dome challenge competition was, by far, the highlight, and people are still talking about it. It was nice to see all of the fun, camaraderie, and leadership happening before our eyes during that time. If you have a moment, take the time to see a fun picture of yours truly with the Philadelphia YMF on their website. The picture is from the Miami MRLC. Since then, we have been busy working on many issues. Some of them include:

1) Working to fine-tune our finances. Our Finance Committee will be looking to find ways to get the most out of limited allotment. In order to maintain the same level of service and value to our members, we are looking at cost cutting as well as different venues to bring in

more income.

2) Establishing a new committee within Region 2, the Committee on Website Development, Student Interaction, and Diversity or (WID). New Governor Christina Casole will head up this committee, with support from Past Governor Bob Efimba, as well as some up and coming volunteers.

3) Planning our next Assembly, to be held in the fall of 2015 at Bucknell University.

4) Our Pennsylvania Legislative Committee has continuously worked to support the ongoing momentum of the 2014 PA Report Card. In addition, it will support an upcoming day on the hill on 5/11/15.

5) Planning our Regional site visits for the remainder of this year.

6) Looking at opportunities to increase our level of participation on National Committees.

7) Considering the opportunity to combine a Region Wide YMG event with the Assembly.

On my end, I continue to gain experience as National Board Member during my second year

of service. I will be presenting the Audit Report to the National Board for the 2nd time at the end of March, and I am pleased to say that all is in order and we are quite healthy as a society.

As I prepare to represent R2 at the upcoming OPAL Celebration and the National Board Meeting, I'd like to reiterate our pledge to be the best Regional Board that we can be. Send us your questions and concerns. And, let us know about your geographic entity successes and challenges. We are here to serve you. My Governors and I hope to see you sometime soon.

SAVE THE DATE

ASCE 2015 Convention

New York City, NY • October 11 – 14, 2015

ASCE

October 11 - 14 , 2015

Sunday through Wednesday

Have you marked your calendar? Don't miss the launch of the ASCE 2015 Convention with its new format, respected technical and educational programming, exciting behind the scenes technical tours, and enhanced short courses. ASCE will be going back to its roots where it all began in 1869. Share in the history, the advancements, and the future and be a part of the new ASCE Convention. Panama has set the bar and New York is going to raise it even higher.

More information will be available at www.asceannualconvention.org in early December, 2014.

Top 5 Reasons to be in New York City at ASCE 2015!

1. For the 145th year in a row, ASCE's Annual Convention provides you with valuable education, exciting Keynote Speakers, and excellent professional networking opportunities.
2. You'll never run out of choices in New York City, which is home to 24,000 restaurants and offers one of the most progressive arts and cultural scenes in the world.
3. New York City is a global transportation hub. The city is easily accessible from anywhere in the world with competitively priced airfare and many reliable, inexpensive options to get around once you've arrived that are available 24/7.
4. The conference offers up to 24 Professional Development Hours (PDHs) of continuing education delivered via Concurrent Sessions, Short Courses, Technical Tours, and General Sessions.
5. New York City is one of the greenest and safest large cities in the United States and offers an abundance of Civil Engineering accomplishments.

Click on Sponsor card to visit website:



Corporate Office: Harrisburg, PA
 Hershey • Pittsburgh • Philadelphia • Sayre
 Caldwell, OH • Canton, OH • Bridgeport, WV • Pleasanton TX



Transportation
 Land Survey and Mapping
 Civil Engineering

855.4DAWOOD (432.9663) www.dawood.cc



Transportation • Construction Management • Geospatial IT
 Geotechnical • Structural • Mechanical/Electrical • Power
 Water Resources • Dams/Hydraulics • Architecture
 Sustainable Design • Environmental Management/Remediation

www.gannettfleming.com ISO 9001:2008 CERTIFIED



- Automated Monitoring
- Instrument Rentals
- Vibration Monitor Rentals
- Field Services

monitoring services made easy

www.geo-instruments.com 800-477-2506

Designing an Environment



- Campus Master Plans
- Athletic Fields/Facilities
- Site Design
- Land Development
- Feasibility Studies
- Landscape Architecture

K&W
 ENGINEERS • CONSULTANTS
 www.kandwengineers.com

The bridges we engineer span generations.

So do the relationships we build. With our clients. With the communities the bridges connect. We provide innovative solutions that combine technical expertise with a commitment to serve our clients throughout the life cycle of a bridge.

- Medium & Short Span Bridges
- Movable Bridges
- Bridge Inspection
- Highways & Interchanges
- Additional Lifecycle Bridge Services




**NEWELL
 TERESKA &
 MACKAY**
 ENGINEERING

- Hydrologic & Hydraulic Modeling
- Bridge Design & Inspection
- Stormwater & Site Design
- Transportation Design
- Technical Training & Course Development

Certified WBE-DBE firm in Delaware, Pennsylvania, and Maryland and registered WOSB with the federal government. Registered Continuing Education Provider (RCEP).

www.ntmeng.com 717.432.4425



MIDDLETOWN | PITTSBURGH | NEW STANTON
 RaudEng.com

WORKING HARD, WORKING SMART.




**Engineers
 Environmental Consultants
 Surveyors
 Landscape Architects
 Safety Consultants**

1-800-738-8395
 rettew.com |   

Colorado • New York • Ohio
 Pennsylvania • West Virginia

RETTEW
 We answer to you.

Click on Sponsor card to visit website:

Responsive People | Creative Solutions



*Highway Design
 Bridge Design
 Roundabout Design
 PPP Services / Design-Build
 Transportation Planning
 Traffic / ITS Design
 Rail Transit Planning & Design
 Environmental Permitting
 Construction Management
 Construction Inspection*



King of Prussia and York, PA
www.rkk.com
ISO 9001:2008 Certified
 Engineers | Construction Managers | Planners | Scientists

SKELLY AND LOY, INC.
 449 Eisenhower Blvd.
 Suite 300
 Harrisburg, PA 17111
 Toll Free: 800-892-6532
 Phone: 717-232-0593
 Fax: 717-232-1799
www.skellyloy.com







SMPS
 Learn more at www.SMPSCentralPA.org
**Society for Marketing
 Professional Services
 Central Pennsylvania**
Want to build your business?

TPD provided Transportation Planning services for the proposed expansion of the Milton Hershey School's North Campus (pictured) in South Hanover Township, Dauphin County, PA



We are currently seeking professionals in various disciplines and locations. Visit us at www.TrafficPD.com to check out our openings.

Services:
 »Transportation Planning
 »Highway, Streetscape and Trail Design
 »Bridge Design and Inspection
 »Traffic Signal System Design
 »Environmental Services and Permitting
 »Construction Management and Inspection



TRAFFIC PLANNING AND DESIGN, INC.
www.TrafficPD.com | 717.234.1430



URBAN ENGINEERS
Formulating Excellence®
 ISO 9001: 2008 Certified | Founded 1960 | Employee Owned
www.urbanengineers.com



WBCM
 ARCHITECTURE ENGINEERING CONSTRUCTION
www.wbcm.com

**TRANSPORTATION
 STRUCTURAL
 CIVIL
 PERMITTING
 INDUSTRIAL
 PROCESS ENGINEERING
 BRIDGE INSPECTION
 LAND DEVELOPMENT
 ENVIRONMENTAL WATER RESOURCES
 GEO SPATIAL INNOVATIONS**

PHILADELPHIA ♦ HARRISBURG ♦ PITTSBURGH

NEWS AND EVENTS

Date	Event	Location
3/11/2015	ASCE Central PA March Dinner Meeting	The Park Inn by Radisson Harrisburg West, Mechanicsburg, PA
3/18-3/20/2015	Capital Area Science & Engineering Fair (CASEF)	Whitaker Center for Science & Arts, Harrisburg, PA
3/24-3/26/2015	ASCE Legislative Fly-In	Arlington, VA & Washington, DC
4/8/2015	ASCE Central PA April Dinner Meeting	The Park Inn by Radisson Harrisburg West, Mechanicsburg, PA
4/10/15-4/12/15	Mid-Atlantic Region Student Conference	University Park Campus, State College, PA
5/11/2015	State Infrastructure Day	Capitol Complex & Hilton Hotel, Harrisburg, PA
6/12/2015	Annual Senator's Game & Picnic	Metro Bank Park, Harrisburg, PA
7/25/2015	Annual Knoebels Picnic	Knoebels, Elysburg, PA
11/4-6/2015	28th Geotechnical Conference	Hershey, PA

Click here to view Press Releases on our Website

