

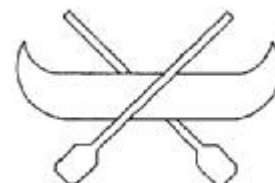
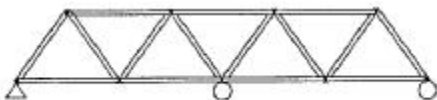
WANTED

2007 ASCE Mid-Continent Student Regional Conference

This year the University of Kansas is hosting the Mid-Continent Student Regional Conference on April 26-28, 2007. There are expected to be 14 schools and 300 people participating in the conference. As part of the conference, students will be participating in the following competitions:

- Concrete Canoe
- Steel Bridge
- Geotechnical
- Balsa Wood Bridge
- Surveying
- Concrete Bowling
- Impromptu (Mystery) Design.

The University of Kansas ASCE Student Chapter is looking for judges for all of these events. The Kansas Section needs your help. We are looking for approximately 70 judges and other volunteers to work throughout the weekend. Each event takes only one day of your time and you will be greatly rewarded for efforts. If you are interested in volunteering as a judge for any of the competitions or have questions please contact Theresa Rohlf at TMRohlf@ku.edu or Levi Turner at lturner@ku.edu.



ASCE Upcoming Events

ASCE Younger Members Group

Topic: General Meeting

Location: 10th Floor Conference Room, Eisenhower State Office Building (700 SW Harrison St.), Topeka

Date: Tuesday, March 6 Time: Noon

Topic: 16th Annual Egg Drop Competition (Younger Member volunteers needed)

Location: 2nd Floor Rotunda of the Kansas State Capital Building (10th and Jackson), Topeka

Date: Saturday, March 10th Time: 10:00 AM

ASCE Structural Group

Topic: Contech Bridge Solutions

Speaker(s): Bob Meinzer, P.E.

CONTECH Bridge Solutions Inc.

David Keaffaber, P.E.

CONTECH Bridge Solutions Inc.

Location: Auditorium A, 4th Floor, Eisenhower State Office Building (700 SW Harrison St.), Topeka

Date: Thursday, February 22nd Time: Noon to 1:00 P.M.

Topic: Fatigue Behavior of Welded Connections Enhanced with UIT and Bolting

Speaker(s): Caroline R. Bennett, Ph. D.

Assistant Professor

University of Kansas

Location: Auditorium A, 4th Floor, Eisenhower State Office Building (700 SW Harrison St.), Topeka

Date: Thursday, April 5 Time: Noon

ASCE Kansas Section Minutes – January 2007

Speaker:

Christopher M. Carrier
Director of Public Works
Wichita, KS 67202-1685
316.268.4497

50-55 people in attendance.

Jessica Slavik (V.P. Wichita Section) arranged the meeting
3 people in attendance representing the Kansas Section
Bob Stokes
Steve Hampton
Michael Ingalls

Chris Carrier presented about the city of Wichita's Arena Neighborhood Redevelopment plan and some of the engineering projects and challenges related to the arena construction. The arena project will cost \$205 million dollars and is proposed to be opened in the Fall of 2009. Along with the arena itself infrastructure improvements are also being made to Kellogg and Rock Roads, the Waterwalk, the Central Rail Corridor, and the River Corridor. All told the total project work will total over \$400 million. More information about the arena can be found on the web at: <http://www.sedgwickcounty.org/arena/>

ASCE Structural Group Minutes – January 2007

Dominique Shannon, Chairman, called the meeting to order at 12:05 p.m. The guest speakers were Greg Weatherd, PE, Highway Section Manager of HNTB's Overland Park office and Jim Werst, P.E., Bridge Project Manager in HNTB's Overland Park office. In attendance were 35 members and 3 guests.

Greg Weatherd started by giving a little background on the scope and timeline of the I-435/Antioch/ US-69 project in Overland Park. He outlined the three major aspects of this project: major modifications to I-435 from Metcalf Avenue to US-69, a new interchange at Antioch Road and I-435, and major modifications to US-69 at the intersection with I-435. Some of the challenges Greg shared were the tight right-of-way constraints of the Antioch/I-435 interchange, the environmental constraints of the Indian Creek Watershed, noise abatement concerns along I-435, as well as the relocation and coordination of utilities crossing I-435 at Antioch.

Jim Werst gave a more detailed discussion on the 2-span welded plate steel bridge carrying Antioch Road over I-435. The new interchange will consist of a tight urban interchange using mechanically stabilized earth retaining walls due to the restricted R/W available. He showed the construction phasing required to remove the existing concrete box and prestressed bridges. Other topics of interest on this bridge are: the reuse of an existing spread footing, the phased construction of MSE retaining walls at the abutments, safe construction access to the pier during heavy traffic, and the removal of existing structures by blasting.

The next structural group presentation will be on Thursday, February 22, 2007 at 12:00 p.m. in the 4th floor auditorium, Dwight D. Eisenhower State Office Building, Topeka, Kansas. The program will be "Contech Bridge Solutions" Given by Bob Meinzer of Contech.

ASCE OFFICERS DIRECTORY

Kansas Section

Michael Ingalls, President

KDOT Bureau of Design, Bridge
700 SW Harrison, 13th Floor
Topeka, Kansas 66603
Ph.: (785) 291-3980
e-mail: ingalls@ksdot.org

Steve Hampton, Activities Coordinator

City of Manhattan
1101 Poyntz Avenue
Manhattan, Kansas 66502
Ph: (785) 587-2415
e-mail: Hampton@ci.manhattan.ks.us

David Church, Membership
Committee Chair

KDOT Bureau of Traffic Engineering
700 SW Harrison, 6th Floor
Topeka, KS 66603
Ph.: (785) 296-3618
Fax: (785) 296-3619
e-mail: church@ksdot.org

Robert W. Stokes

ASCE Region 7 Representative
Kansas State University
2118 Fiedler Hall
Manhattan, KS 66506-5000
Ph: (785) 532-1595
Fax: (785) 532-7717
e-mail: drbobb@ksu.edu

Earl Tast, President Elect

Professional Engineering Consultants
1263 S.W. Topeka BLVD.
Topeka, Kansas 66612
Ph: (785) 233-8300
Fax: (785) 233-8855
e-mail: Earl.Tast@pec1.com

Michael Stewart, Webmaster \
Newsletter Editor

Professional Engineering Consultants
1263 S.W. Topeka BLVD.
Topeka, Kansas 66612
Ph: (785) 233-8300
Fax: (785) 233-8855
e-mail: Michael.Stewart@pec1.com

Hani Melhem, Ph.D., KSU Faculty
Advisor

Professor of Structural Engineering
Kansas Sate University
Ph.: (785) 532-1584
e-mail: melhem@ksu.edu

Joyce Smith, K-State Student Contact

e-mail: jesmith@ksu.edu

Howard Lubliner, Secretary/Treasurer

KDOT Bureau of Design, Road
700 SW Harrison, 11th Floor
Topeka, Kansas 66603
Ph.: (785) 296-4139
Fax: (785) 296-4302
e-mail: HowardL@ksdot.org

Hani Melhem, Ph.D., Past President

Professor of Structural Engineering
Kansas Sate University
2127 Fiedler Hall
Manhattan, Kansas 66506-5000
Ph.: (785) 532-1584
Fax: (785) 532-7717
e-mail: melhem@ksu.edu

Dr. Robert Parsons, KU Faculty
Advisor

Ph.: (785) 864-2946
e-mail: rparsons@ku.edu

Levi J. Turner, KU Student Contact

e-mail: jlturner@kc.rr.com

Wichita Branch

Lee Carmichael, President

MKEC Engineering Consultants
411 N. Webb Rd.
Wichita, KS 67206
(316) 684-9600
e-mail: lcarmichael@mkec.com

Paul Cater, Secretary/Treasurer

9715 W. 9th
Wichita, KS 67212
(316) 264-8008

Jessica Slavic, Vice President

Professional Engineering Consultants
303 S. Topeka
Wichita, KS 67202
(316) 262-2691
e-mail: jessica.slavic@pec1.com

Ron Nuessen, Past – President

Parsons Brinderhoff
225 North Market, Suite 350
Wichita, KS 67202
(316) 263-6121
e-mail: nuessen@pbworld.com

Associate Member Forum

Ken Farmer, President
Phone: (785) 296-8871
e-mail: farmer@ksdot.org

Aaron Frits, Vice-President
Phone (785) 296-4099
e-mail: afrits@ksdot.org

Dave Cronin, Secretary/Treasurer
Phone: (785) 296-0143
e-mail: cronin@ksdot.org

Kelly Cool, Social Chair
Phone: (785) 296-0500
e-mail: kelly_cool@yahoo.com