



SEATTLE SECTION NEWSLETTER

April 2015
Volume 50 No. 8

Section Officers

October 1, 2014 – September 30, 2015

SEATTLE SECTION OFFICERS

Stefanie Herzstein, *President* 425-896-5219
Evan Sheesley, *President-Elect* 206-859-0224
Elizabeth Korb, *Secretary* 206-331-1176
Gene Gladden, *Treasurer* 425-281-7288
Perry Cole, *Immediate Past President* 425-471-9022
Jessica Aguilar, *Director (2015)* 206-357-5625
Lisa Harbert, *Director (2016)* 206-371-3079
Amanda Shellenberger, *Director (2017)* 206-903-3371

YMF OFFICERS

Courtney Davis, *President* 206-926-0451
Cal Bearman, *President-Elect* 206-764-5253
Don Nguyen, *Secretary* 203-216-3933
Tara Burton, *Treasurer* 425-406-7118
Elizabeth Clark, *Board Representative* 425-468-1507

UW/SEATTLE U CONTACTS

Amy Riley, *University Advisory Committee Chair*
amy.riley@seattle.gov

KITSAP BRANCH OFFICERS

David Dinkuhn, *President* 360-850-5319

NORTH BRANCH OFFICERS

Gabe Ng, *President* 206-718-5252

BOEING BRANCH OFFICER

Vinny Avendano, *President*
vinicio.p.avendano@boeing.com

WEBMASTER

Eric Knigge
seattleasce@yahoo.com

ASCE Seattle Section and ITE Joint Meeting

Tuesday, April 14, 2015,
11:30 a.m. - 1:30 p.m.

Place: City of Bellevue's City Hall
450 110th Avenue NE, Bellevue, WA, 98009

Cost: \$15 for ASCE and ITE members
\$20 for non-members
\$10 for students

Meal: Lunch box. Choices include: Turkey Cran, Turkey
Havarti, Tuna Salad, Club, Veggie, Chicken Caesar Salad,
or Cobb Salad

Please register with Carla Nasr by noon on April 13
at itewaregister@gmail.com. You will be charged for the
meal if you cancel after this date.

Direct questions or comments regarding meetings to
Section President Stefanie Herzstein at
seattleascepresident@gmail.com

Program — Current State of Bridges Operated by Washington State and City of Seattle

Sunni Wissmer and Darcy Akers, University of Washington

The American Society of Civil Engineers' 2013 [report card](#) gave bridges in Washington State a grade of C- with 372 out of 7,902 bridges considered structurally deficient and 1,694 bridges considered functionally obsolete. Come learn about the current state of bridges managed by Washington State and City of Seattle and the progress being made on them. Our speakers are DeWayne Wilson, Bridge Asset Management Engineer for Washington State Department of Transportation and John Buswell, Roadway and Structures manager at Seattle Department of Transportation.

The next newsletter deadline is:
5:00 p.m.
Monday, April 20, 2015

~~~~~

Newsletter Editor:  
**Todd Crandell**  
[seattleASCEnews@gmail.com](mailto:seattleASCEnews@gmail.com)  
Phone: (206) 459-2250

#### CHANGE OF ADDRESS:

All changes to your address (including your newsletter e-mail address) should be provided to ASCE at [www.asce.org](http://www.asce.org) or: 1801 Alexander Bell Drive, Reston, VA 20191-4400. The Seattle Section will receive your updated information from ASCE.

AMERICAN SOCIETY OF  
CIVIL ENGINEERS, SEATTLE SECTION  
<http://www.seattleasce.org>

Volume 50 No. 8, April 2015  
Published 10 times a year

#### ASCE SEATTLE SECTION NEWSLETTER ADVERTISING RATES

##### Employment Ads:

\$75 for one month on web site and in the newsletter; \$50 per month for subsequent months

##### Display Ads:

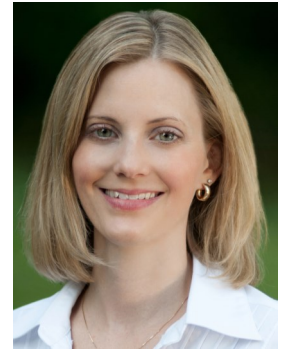
Costs are for one year (10 issues):  
Business Card size \$100  
Quarter page \$250  
Half Page \$500  
Full Page \$1,000

To place an ad or for more information, contact the editor at [seattleASCEnews@gmail.com](mailto:seattleASCEnews@gmail.com).

## President's Column

By Stefanie R. Herzstein, P.E., PTOE, M.ASCE, Seattle Section President

I was recently invited by a neighbor to present about civil engineering to her fourth grade class. The class was studying a section on transportation engineering and they wanted to hear from a real transportation engineer. This opportunity reminded me how important it is to promote our profession and educate children about engineering.



A recent article on qz.com based on US News (Nisen, 2015) noted that enrollment in graduate level engineering has increased by 38 percent since 2005, outpacing both medical school and the declining law school enrollments. The only way to keep this trend going is for engineers to get in front of the public and educating students. Seattle ASCE has many opportunities for you to get involved through our K-12 outreach, diversity, community service, and many other committees. Upcoming outreach events include:

- Society of Women Engineers Dinner with Everett Community College Students - April 9.
- Rebuilding Together Community Service Event - April 25.

You can find out more about upcoming events at our website [www.seattleasce.org](http://www.seattleasce.org). I encourage you to promote our profession not only to children but to your family, friends, and neighbors.

Are you visiting a classroom? ASCE has free resources for you. Visit [www.asce.org/pre-college\\_outreach/](http://www.asce.org/pre-college_outreach/).

## ASCE Director for Infrastructure Initiatives to speak at PacTrans Regional Transportation Seminar

**When:** June 4, 1:00 - 1:50 p.m.

**Where:** University of Washington Allen Auditorium, Seattle

**Topic:** The Case for Engaging in Public Policy - Your Projects Depend on It!

ASCE's Director for Infrastructure Initiatives, Emily Feenstra, will present an hour-long seminar on how to engage with decision-makers, and why civil engineers should care about infrastructure at the federal level. You will learn about the current status of infrastructure funding for 2015, how ASCE has engaged in the policy debate, and best practices for becoming a trusted resource on infrastructure issues in your community.

For questions, please contact Maria Bayya, Assistant Director for PacTrans, at [pactrans@uw.edu](mailto:pactrans@uw.edu).

---

## Employment Notices

To post an employment notice in the newsletter and on the Section's web site, please contact the [newsletter editor](#) in advance of the monthly deadline (the 20th of the month). Rates for advertising are shown on page 2.

---



### Resident Engineer/Senior PM – Rail

HMM is hiring an Senior Project Manager/Resident Engineer to support our Rail Systems group in Seattle, Washington. Relocation could be available. Candidate will be responsible for managing the construction management team for transit systems on large infrastructure project. Qualified candidate should have 15+ years of experience in transit systems. Prefer a BS in Electrical or Mechanical Engineering. Professional Engineer registration is desirable.

Please visit our website at [www.hatchmott.com/careers](http://www.hatchmott.com/careers) and apply to job# 17881

#### Qualifications:

- At least 10 years of construction management experience managing all system elements such as Traction Power, Overhead Contact System, Train Control/Train Signals, Communications and SCADA System and rail
- Construction Manager or Resident Engineer experience must include direct responsibility for supervision of procurement, installation, testing and commissioning of systems described above including systems integration Testing and safety certification of systems.
- Self-starter that requires minimal supervision
- Ability to work with others and demonstrated ability to communicate effectively with inspectors, contractors, consultants, labor unions, the public, third parties, clients and government officials.
- Good written communications
- Broad knowledge of transit systems revenue operations and normal and emergency procedures.
- Experience in the installation of different types of track is a plus.

- Experience in design and installation of electrical control systems a plus.
- Demonstrated ability to resolve field problems expeditiously so as to minimize delays and claims.
- Demonstrated ability to expeditiously negotiate contract change orders.
- Ability to manage multiple contractors working simultaneously on a single project.
- Demonstrated ability to write professional/technical/contract letters and reports.
- Demonstrated ability to manage complex teams of construction management personnel
- Ability to work cooperatively with architectural, engineering, and construction personnel.

VEVRAA Federal Contractor

Request Priority Protected Veteran Referrals  
EEO



**Jacobs Engineering, Bellevue, WA is seeking a Civil Engineer for our Water/Wastewater Infrastructure Practice**

[www.Jacobs.com](http://www.Jacobs.com)

#### Description of Duties and Responsibilities:

Serves as a Project Engineer, responsible for leading project level planning and design teams, while completing technical tasks and coordinating with other company and outside resources. Has a lead role in planning, preliminary, and final design phase work assignments on water/wastewater projects that include pipelines, pump stations, hydraulic analyses, and trenchless design elements. Collaborates with project managers, and other technical staff to complete deliverables

within scope, budget, and schedule. Has regular contact with project owners during completion of technical work on projects. Has input to preparation of technical approaches during preparation of proposals.

Has a demonstrated desire and ability to advance skills to include learning new skills, engineering software programs, and project execution. Position has potential to grow into a senior-level engineering, or project management position dependent on candidate's career objectives and skills.

#### Qualifications / Background and Experience Required:

BS or MS in Civil Engineering or appropriate science degree with 8 or more years planning and design level experience. A Washington PE is required. Project-level planning and design experience on water/wastewater conveyance projects in the Washington/Oregon region is preferred. Working experience with AutoCAD/Civil 3D and water modeling software. Experienced in time management and has ability to prioritize multiple tasks. Possesses excellent written and verbal skills in communicating technical subjects. Possesses the ability to interact and communicate effectively in a professional manner.

# **H**ow to Promote Sustainable Civil Infrastructure Design Locally – A Success Story

This is the third and final installment of the Sustainability Series developed and authored by members of the ASCE Seattle Sustainability Committee. The series started with exploring what sustainable design is, followed by an article to describe how it is implemented. This article highlights a recent project taken on by the Committee that embodies what a sustainable project design team is and how you can be involved in local sustainable design issues.

The ASCE Seattle Section Sustainability Committee, “Team 303,” [won 1st place at the Tacoma Green Infrastructure Challenge \(TGIC\)](#) for their concept of industrial redevelopment. The finals event and awards ceremony was held on March 5, 2015 as a part of the 2015 Sustainability Symposium in Tacoma, Washington. This was the first-of-its-kind competition in the Pacific Northwest, although similar competitions have been held in other cities across the country. Tacoma’s desire for innovation placed an emphasis on forming multi-disciplinary teams that included students while working on real project sites. The teams were allowed to choose from three different project types that included Industrial Redevelopment, Urban Redevelopment, and a Green Roadway. The first part of the competition, scored anonymously, required development of a design narrative, traditional and green infrastructure cost estimates and site plans. Up to three finalists were chosen for each project type. The finals, held at the end of the Symposium, included a project poster and live presentation in front of a panel of judges.

The team consisted of individuals from varying backgrounds and companies brought together through the ASCE and their common interest in providing sustainable solutions within their industry. The Industrial Redevelopment Project provided the team with an opportunity to explore passions for sustainable design while developing a site concept that was mindful of both initial construction and maintenance costs.

The guidelines for the 20 acre Industrial Redevelopment site were to provide a leasable space with a 50,000 to 100,000 square foot building and transportation dependent operations. The concept had

## **Sustainability Series**

### *Part 3 of 3: A Success Story*



By ASCE Seattle Sustainability Committee members

Part 1, “What is Sustainability?” appeared in the November 2014 issue.

Part 2, “How is Sustainability Implemented?” appeared in the January 2015 issue.

to consider stormwater runoff and a failing shoreline bank. The Port of Tacoma, the sponsor for the site, was willing to consider paying higher capital costs for the project for reduced long term maintenance and operation costs.

[The team’s design goals](#) were to maximize the functionality of the site, to offer multi-purpose beneficial tenant occupancy, and to increase marketability. Although the site was encumbered by utilities and existing structures, the design integrated sustainable features that met treatment and drainage design requirements while providing attractive site amenities. The design also minimized site disturbance to address soil contamination concerns. The resulting proposal provided an efficient site design with redundant water quality benefits to fortify ecological connectivity and function in this industrial environment.

The building layout provided flexibility and screening of the adjacent substation. The building design incorporated a green roof with native grasses selected for their hardiness and a soil mix appropriate for project goals. Rainwater harvesting was proposed as a stormwater strategy to help offset the need for added site interventions and provide water for building uses such as wash-down or periodic green roof irrigation. The site layout maximized space available for port operations and screened it from the roadway by a constructed wetland. Site grading was minimized so that contaminated soils could be capped with concrete pavement and serve as a materials lay-down area.

The proposed bulkhead provided water access while serving as a “cut-off” to soil contamination leaching into the waterway. A perforated underdrain was

See [Sustainability Series](#) on page 5

designed to collect groundwater blocked by the bulkhead and treat the water for high pH via a cartridge filter manhole before discharging to the waterway. Riprap was proposed to be removed and replaced with a stabilization mat. The vegetated stabilization mat of articulated concrete blocks was planned along the shoreline to mitigate shoreline degradation, as well as enhance fish habitat at the slope toe.

The site is encumbered by a substation, transmission tower, utilities easements, and is in close proximity to the 11th Street Bridge. Constructed wetlands, biofiltration swales, and dispersion trenches were recommended in these constrained portions of the site to meet stormwater treatment needs while also serving as site amenities for the future tenant. Although public access would be limited because of the site's industrial use, the stormwater features provide a visual barrier for neighboring properties as well as screening for public view benefit. The proposed combination of stormwater treatment features, including constructed wetlands, biofiltration swales, green roof, cartridge filter units, pervious pavement, and oil water separators provided a treatment scheme that met or exceeded the City of Tacoma's stormwater management manual requirements for stormwater treatment within the Northeast Tacoma watershed.

Team 303 was truly multi-disciplinary including civil engineers specializing in stormwater, remediation, land development and waterfront structures, a landscape architect, an urban planner, sustainability professionals, students, an industry supplier, and a construction engineer. TGIC was of interest to the team members because of the many native Tacoma stakeholders that make up the team. We are members of the community, residing, working, and enjoying the arts, museums, and parks in the easily navigable and accessible city of Tacoma.

The members of Team 303 were:

- Mona Syrovatka, Architectural Sales Representative from [Basalite Concrete Products, LLC](#);
- Kimberly Crow, Senior Graphics Designer at [BergerABAM](#);
- Shawna Lenn, PE, Construction Engineer from [BergerABAM](#);
- Connie Linden, PE, Project Manager from [BergerABAM](#);
- Brett Ozolin, PE, Project Engineer from [BergerABAM](#);
- Amanda Schweickert, PE, ENV SP, LEED AP BD+C, Project Engineer from [BergerABAM](#);
- Brian Strandberg, Designer from [BergerABAM](#);
- Kristina Lowthian, EIT, Graduate Student from [Colorado State University](#);
- Diana Hasegan, PE, ENV SP, Project Engineer from [Conestoga-Rovers & Associates](#);
- Nikolas Gordon, EIT, Bridge Engineer from [Jacobs](#) and Graduate Student from [University of Washington](#);
- Bronwen Carpenter, PLA, LEED AP BD+C, Landscape Architect from [Paladino and Company](#);
- Julia Raish, Urban Planner from [Paladino and Company](#);
- Stephen Hannan, PE, Civil Engineer from [Ridolfi](#)

The Seattle Section ASCE Sustainability Committee's mission is to bring local professionals, civil engineers, planners, facility owners and managers, and students together to discuss current and future sustainability issues facing the Seattle area. The Committee promotes sustainable development principles through professional development and outreach activities. The Tacoma Green Infrastructure Challenge is a wonderful example of how the Committee encourages and promotes sustainability in the civil engineering community.

If you are you passionate about sustainability and want to make an impact in your local community, we welcome your involvement in the activities of this committee! Contact us at [sustainability.seattle@gmail.com](mailto:sustainability.seattle@gmail.com).

## Seattle Section Members Win 2015 T. Y. Lin Award

By Stefanie R. Herzstein, P.E., PTOE, M.ASCE,  
Seattle Section President

We would like to congratulate Stuart Stringer, P.E. and Robert E. Harn, P.E., M.ASCE on winning the Society's 2015 T.Y. Lin Award. The award was given for their paper on "Seismic Stability of Marine Piers Built with Prestressed Concrete Piles," published by American Concrete Institute, October 2013.

The ASCE Prestressed Concrete Award was endowed in 1968 by T. Y. Lin, F.ASCE, to encourage the preparation of meaningful papers in the designated field of endeavor. The award was instituted by the Board of Direction in May 1968. By Board action in October 1969 the name of the award was changed to the "T. Y. Lin Award." The award is made in accordance with the policies of the Society and the following specific rules.

## Reach over 2,000 Engineering Professionals

Post Your Employment Ad in this Newsletter  
and on the Seattle Section Web Site

See advertising details  
on page 2

## April Community Service Event – Rebuilding Together

**When:** Saturday, April 25, 8:00 a.m.–4:00 p.m.

**Where:** Burien (RSVP for address)

On April 25, 2015, ASCE member volunteers will be teaming with employees of the law office of Wilson Sonsini



Goodrich & Rosati to

take part in Rebuilding Together Seattle's Spring Rebuilding Day. The activities on this nationwide day of service provide much-needed upgrades to local homes and nonprofit facilities, with 25 projects in the Seattle area alone. This year's project will benefit an elderly couple, residents of a home in Burien, that is in need of yard work, window replacement, and other safety and ergonomic improvements.

The event is from 8 am to 4 pm, and volunteers will be provided with doughnuts and coffee, lunch, and water. Volunteers are encouraged to bring gloves, sturdy boots, and any other gear to work in, rain or shine. Up to 20 volunteers needed. Contact Jessica Aguilar at [jessica.aguilar@abam.com](mailto:jessica.aguilar@abam.com) if interested.

## New Member Report

Based on the new membership information from the ASCE national database, the following members enrolled to the Seattle Section between February 2, 2015 and March 11, 2015.

|                   |                 |                     |                     |
|-------------------|-----------------|---------------------|---------------------|
| Miriam Lusk       | Ramona Barber   | Peter Polivka       | Mitchell Boyd       |
| Joe Amaro         | Kory Swabb      | Elise Gronewald     | David Farr          |
| Colin Chamberlain | Connor Lee      | Kristian Niederkorn | Katherine Bren      |
| Paul Caswell      | Kaitlyn Hammond | Scott Erickson      | Chris Kemp          |
| Maxwell Edenholtm | Valerie Wu      | Joe Willis          | Sharfina Adamantine |
| Zeno Martin       | Monica Erickson | Jack Sanders-Ervin  | Jeff McClintock     |
| Joe Griffin       | Lynni Bennett   | Glen Vandervort     | Ellen Heile         |
| Aaron Baumgardner | Andrew Brew     | Kyle Umlauf         | Huy Nguyen          |
| Tim Adamson       | Mehedi Maswood  | Schlyer Hect        |                     |
| Justin Maghirang  | Alfonso Mendoza | Nammy Tran          |                     |
| Stephen Trent     | Michael Likavec | Jenny Chan          |                     |

## Everett Community College Mentor Night—Help Needed

By Paul Grant, P.E., M.ASCE

**Everett Community College**  
**“Dinner with Industry”**  
**Thursday, April 9th, 6:00 to 8:00 pm**

The Society of Women Engineers (SWE) is organizing an event at the Everett Community College to provide its students an opportunity to speak with broad spectrum of engineering professionals and broaden their horizons on the diversity of engineering disciplines and different career paths. Past events have had up to 60 participating engineers and a similar number of students. The format of the event includes an introduction from the President

of the College about the critical need for engineers in society. Following the introduction, the practicing engineers and students are treated to a buffet dinner where the mentors are stationed at table and the student rotate between tables during four 10 to 15 minute breakout sessions. If you are interested in sharing your time and answer questions posed by students, please sign up for the event by contacting Dilraj Bal at [dsbal@students.everettcc.edu](mailto:dsbal@students.everettcc.edu).

Thank you for your support.

## Highline Community College Mentor Night—Help Needed

By Paul Grant, P.E., M.ASCE

**Highline CC Student Union Building (Bldg. #8)**  
**Pacific Highway South & South 240th St., Des**  
**Moines**  
**Tuesday, April 21st 6:00 to 8:00 pm**

If you are interested in being a mentor for a night for college students, the Puget Sound Engineering Council (PSEC) needs your help! The purpose of the mentor night activity has been to bring as many practicing engineers together with as many students as possible. We are trying to inspire the students toward a career in engineering. The mentor night allows engineers to relay their experience in the profession and answer questions posed by students. The event will be kicked off with a brief introduction of the engineering disciplines represented by the volunteers followed by open forum where the students visit various tables and converse with the mentors. Mentors are encouraged to bring a sample of work that will fit on a 30"X30" table top for potential discussion with the students. Students will rotate between mentors and ta-

bles to get a broad overview of answers to their questions. Pizza and soft drinks will be provided!

If you are interested in participating, please [click here to sign up online](#).

Maps and further instruction will be sent out prior to the event.

Thank you for your support.



Find out how your firm  
can benefit from our  
**25+ years of Experience**  
serving your industry.

**Professional Liability Insurance  
Specialists for Civil Engineers**

**HALL & COMPANY**

Serving Architects, Engineers and Environmental Consultants

(360) 598-5019 [swatson@hallandcompany.com](mailto:swatson@hallandcompany.com)  
[www.hallandcompany.com](http://www.hallandcompany.com)

---

## ASCE Seattle Section Executive Board Minutes for January 14, 2015 Meeting

### Attendees:

Perry Cole  
Liz Korb  
Stefanie Herzstein  
Elizabeth Clark  
Evan Sheesley  
Gene Gladden  
Lisa Harbert  
Ed Huston  
Veronica Wong

Meeting called to order at 4:31 pm by Stefanie. MOTION to approve agenda and passed unanimously.

MOTION to approve meeting minutes for December and passed unanimously with one amendment.

### Old Business

- Region 8 Awards. Two months until nominations due.

### New Business

#### Treasurer's Report

- MOTION to approve meeting report for November and December passed unanimously with one amendment to the date.
- Credit card payments status. Only using Paypal now.
- Financial record keeping process for future auditing. Proposing three-month schedule.

#### Membership Chair Report

- Based on the new membership information from the ASCE national database, downloaded on 26 December 2014, 14 members have enrolled with the Seattle Section since 26 November 2014.
- As of 26 December 2014, the Seattle Section and Branches have 2,447 members; this is an increase of 22 members since the end of October.
- The winners of the membership drive are Jessica Fortino and John Nissen.
- Might try and contact members for renewal reminders.

#### Standing Committees Report

- **Audit Committee:**
  - No updates.
- **Diversity Committee:**
  - No updates.
- **House and Hospitality Committee:**
  - House and Hospitality would like more coordi-

nation with Todd regarding the website event and dinner emails and registration page.

- **Legislative:**

- Successful December meeting with Sec. Peterson and Sen. Hobbs.
- Working with Henry Haselton on closer coordination with APWA's lobbying efforts this month as well as hope to kick off a meeting to discuss who to send to the legislative fly-in in April. The joint effort with AELC to redo the RCW 18.34 rules covering the profession is also proceeding ahead and we're looking forward to the results.

- **PSEC:**

- Past Activities
  - Engineer of the Year Awards were submitted.
- Planned Activities
  - Mentor Night at Seattle Central College- January 15th.
  - Engineer's Week Fair - February 7th at Museum of Flight
  - Engineer of the Year Awards Banquet - February 14th at Museum of Flight
  - The Section will not sponsor a table for awards banquet.

- **RH Thompson Scholarship Chair:**

- No updates.

- **University Advisory Committee:**

- No updates.

- **K-12:**

- Registered for a booth at the Puget Sound Engineering Council engineers fair at the Museum of Flight February 7, 2015. ASCE will have a booth with interactive activities for kids where they get to build gumdrop structures, paper bridges and straw rockets. This is a fun, educational and activity-packed event that is well attended. It aims to educate kids about civil engineering and science principles. We are looking for volunteers to help facilitate the ASCE booth for three shifts: 9:30 AM- 12:00 PM, 12:00 PM - 2:00 PM and 2:00 - 4:30 PM. The first and last half hours will be for setting up and cleaning up. Please email eset.alemu@gmail.com or conjles@gmail.com if you can help in one of the shifts.
- Sixth annual Central Sound Regional Science and Engineering Fair on Saturday March 7. Judge registration is now open.

See *January Minutes* on page 9



- **Program Chair:**
  - Potentially a joint lunch with ITE in April.
- **Professional Practice:**
  - No updates.
- **EWB Puget Sound Professionals:**
  - No updates.
- **Public Information Chair:**
  - No updates.
- **Community Service Chair:**
  - No updates.
- **History and Heritage:**
  - Working on the Landmark Brochure. Want to add Tacoma Narrows Bridge even though not in the Section. MOTION to approve to reallocate \$150 from budget to this committee to gather photographs.
  - Meeting on Jan 14, one member who comes from Sequim will be in Seattle. We will need the achievable materials from the section Secretary and Treasurer, and YMF as appropriate.

#### Branch Reports and Action Items

- **North branch**
  - Next branch meeting: January 21, 2015 (Third Wednesday) in Mt. Vernon at the Trumpeter House.
  - March 22 the speaker will be Dr. Joseph Wartman, University of Washington. The topic will be the Oso Landslide.
  - North Branch President's Message- Gabe Ng put together a really cool newsletter with the North Branch's annual goals and planned meetings. It's included in the ASCE E Room under Board Meeting Materials.
  - ACTION ITEMS:
    - None
- **Kitsap branch**
  - Kelly Dean went to meeting on January 13, 2015.
  - Second Tuesday of every month. No presenter for February lined up but presenters are lined up for March and April. Meetings are at Elmers in Poulsbo.
  - ACTION ITEMS:
    - None
- **Boeing branch**
  - No update.
  - ACTION ITEMS:
    - None

#### Technical Committees Reports and Action Items

- **Geotechnical group**
  - Thursday, January 22, 2015. Topic: Challenges and Successes in Seismic Deformation Analysis. Speaker: Michael Beaty, PhD, Principal Engineer of Beaty Engineering in Beaverton, Oregon. Times: 4:30 Planning Meeting, 5:30 Social Hour, 6:30 Dinner, 7:30 Program. Red Lion Hotel, 11211 Main Street, Bellevue, WA 98004, 425-455-0654. Please RSVP online by 4:00 PM on Friday, January 16, 2015 for the advance RSVP rate. Cost: \$40 with advance RSVP by 4:00 PM on Friday, January 16. \$45 with reservations made after 4:00 PM on Friday, January 16 or at the door. \$20 for non-reimbursed public agency employees, unemployed members, and students. A limited number of student sponsorships will be provided on a first-come, first-served basis.
  - Soil-Structure Numerical Modeling in Geotechnical Practice One-Day Short Course January 23, 2015. Best Western Executive, Seattle, Washington. This short course will benefit practicing geotechnical engineers, structural engineers, planners, agency representatives, reviewers, and others who are involved in projects where numerical methods provide basis for engineering decisions. The course will be especially applicable to geoprofessionals who do not perform numerical modeling themselves.
- **Ports and Harbors**
  - There are no events scheduled for this month.
- **Structural Committee/ SEAW**
  - **Old Business**
    - About 700 members in Seattle, about 1,000 in State. About 35 percent of members are also in ASCE.
    - The SEFW Forum on Nov 21, 2014 was very successful. The topic was Bridges to Prosperity. Avery Bang, the B2P Executive Director and Brooke Shore were the speakers.
    - There is no SEAW meeting in December.
    - Northwest Conference 2014: Seattle hosted. The conference was a success at both the technical and the financial levels.
    - Technology - website update. The new site is providing access to inter-committee communications and access to agendas, minutes, and other pertinent documents. Automatic notifications will be sent as items are added.
    - SEAW set up the first Student Competition be-

See *January Minutes* on page 10

tween UW and SU. The teams are given a task, materials, tools, and 3 hours. The structures we re-tested in the Baldwin machine at the UW. The event was well received and will likely be expanded to include WSU and Gonzaga.

- Christchurch, New Zealand visiting contingency – Steve Pfeiffer gave a walking tour around Pioneer Square. He noted the irony in the difference between the Seattle URM ordinance, and the time it's taking to get support and buy-in, where Christchurch can't get there fast enough. They were amazed at how much retrofit we've done without mandatory ordinance. One of the most compelling stories from Christchurch was a woman's first-person account about a façade failure that killed 17 people on the bus passing a URM building. She was in hospital 2 months, and wasn't even a building occupant. The Seattle URM cost benefit study suggests there need to be incentives other than reduced permit fees.

#### ***New Business***

- UW/SU Student/Firms Showcase – will be held at the Waterfront Activities Center at the UW on January 28th.
- SEAW is raising its dues. Balloting for the by-laws change to raise both State and Chapter dues took place via our MemberClicks solution on our new website.
- YMF Golf Scramble – The SEAW YMF has reached out to ASCE YMF about collaborating on the tournament.
- PSEC – SEAW is concerned about PSEC's apparent movement into areas that the members of PSEC are heavily involved in, such as STEM and YMF. We are setting up a meeting with the PSEC President to discuss.

#### **• Urban Development & Transportation:**

- There is not scheduled meeting this month.

#### **• Water Resources**

- When: January 15, 12:00- 1:00 p.m.
- Where: HDR's Bellevue Office, 500 108th Ave NE, Suite 1200
- Logistics: No registration is necessary. Parking is available in HDR's building. Lunch is not provided so bring your own. Contact Scott Kindred with questions.
- Title: SPU Ballard Roadside Raingardens- GSI Basin Retrofit for CSO Control
- Speaker: Robin Kirschbaum, PE, LEED AP, HDR

#### **• Sustainability**

- We participated in the Sustainability conversation (#2) for the ASCE section newsletters.
- Formed a team to participate in the Tacoma Green Infrastructure Challenge and held 2 design charrettes.
- We have a joint section and committee meeting on Jan. 14th with speakers from Port of Seattle, WSDOT and King County.
- In February, we will have a meeting in Bellevue with a speaker from Artisan Electric about Residential Solar opportunities

#### **YMF**

#### **• Past Events**

- December 11 – Engineers Without Borders Holiday Social (2 YMs)
  - EWB Puget Sound Chapter invited ASCE YMF to their holiday social. We have had a couple of joint events with EWB this past year and so we were happy to invite them as well to our holiday event. EWB provided appetizers.
- December 15 – Officer's Meeting (Conference Call)
- December 16 – Annual Holiday Party and Toys for Tots (50+ YMs)
  - Over 50 YMF members and their guests gathered at the Pyramid Brewery in Seattle on December 16th for food, drinks and some holiday cheer. Guests chowed down on pizza and enjoyed a variety of microbrews from Pyramid. Highlights from the night included door prizes, engineering-themed trivia, and an overflowing box of donations for Toys for Tots. We were also able to raise \$155 for WRYMC as a portion of the beverage sales was generously donated by Pyramid.
- January 5– Networking (Eastside)
  - 11 YMF members and guests met up at Bake's Place in Downtown Bellevue for some appetizers and drinks on January 5th. Attendees got to listen to some live entertainment and enjoy some delicious food. It was great to see some new faces and catch up after the holidays.

#### **• Upcoming Events**

- January 8 – ASCE UW Mock Interview Night

See [January Minutes](#) on page 11

- January 11 – March 30 – ASCE Soccer Team – Winter Season
- January 13 – Networking (Seattle)
- January 15 – Young Professionals Panel – University of Washington
- January 15 – PSEC Engineering Mentor Night – Seattle Central Community College
- January 19 – PSB Pre-event Volunteer Meeting
- January 22 – Young Professional Panel – Seattle University
- January 24 – January Community Service event – Bike Works – Prep and Pack Bikes for Africa
- January 24 – Future City Competition – K-12 Outreach event
- February 7 – Popsicle Stick Bridge Competition 2015
- February 7 – PSEC Engineering Fair
- February 20-21 – WRYMC 2015
- March – Portland YMF / Seattle YMF Joint Leadership Retreat at Mt. Hood
- **Committee Activities**
  - Putting together an executive panel presentation. Tentative date in late spring.
- **Action Items**
  - Starting to use our US Bank account. Tara plans to transfer all the money from BECU to US Bank and close the BECU account.
  - Looking into options for earning more interest on our savings so we can provide more scholar-

ships in the future. We talked with Pete from National. We can invest in stocks and bonds if we want. National has a 50:50 mix between stocks and bonds. They don't want to invest for us as they don't want to be in the middle. If we wanted to invest in stocks we would need to do it with the Seattle Section tax ID number; we would need to make sure we got we got a separate account number to keep track of the funds separately. If we want to invest our scholarship money. Pete can help choose funds through Morningstar. Nothing has been decided.

- MOTION to re-appropriate money to allow six students come for free to a Section meeting.

#### **Miscellaneous**

- Did not win Outstanding Section Award.
- Ideas for location of Thu, Feb 19 Region 8 dinner (30 people) and Fri, Feb 20 Seattle Section dinner (number to be determined).
- Request LOCEA nominations to make announcements at June 10 meeting.
- Request governor to come to a Section meeting.

#### **Announcements**

- Joint meeting with Geotech in February.
- Announce LOCEA in February.

Next board meeting February 26 at 4:30pm.

Meeting called to a close at 5:52pm.

# **RESERVE YOUR SPOT NOW!!**



## **2nd Annual Pacific Northwest SAME Small Business Symposium**

*The **Society of American Military Engineers (SAME)** will present a full day networking, educational, and luncheon event focused on federal contracting opportunities for small businesses on **April 28, 2015** from 8:30 am to 4:00 pm at the Kitsap Conference Center, 100 Washington Avenue, in Bremerton. Last year, over 200 people attended, making this one of our most popular events. Because of the extremely positive feedback we are happy to host this event once again. This year, we have integrated many of your excellent suggestions to improve the quality and usefulness of this stellar event. We've added the following items to this year's event:*

- *Now a Full day event*
- *Happy Hour Networking and Raffle Giveaway Reception*
- *Small Business Focused Courses throughout the day (PDH's will be offered)*
- *More Sponsorship Opportunities*
- *Plenary Session*
- *More networking!*

*Please join us for what will be a great networking and educational opportunity for both small and large businesses in the A/E/C industry. This outreach event is being jointly sponsored by the **SAME Tacoma and Seattle Posts**. We have brought in contracting specialists from local/regional military commands and federal agencies for panel style educational briefings and discussions. In addition to the briefings, there will be formal ("speed-dating" style), informal networking opportunities, exhibit booths and small business focused courses sponsored by Kitsap Economic Development Alliance (KEDA). The event will feature a sit down luncheon featuring **NAVFAC Northwest Commanding Officer, CAPT Mark Geronime, CEC, USN** as our featured speaker. A Reception will be held in the Oyster Bay Room at the Kitsap Conference Center following the event. The reception will feature a special guest and multiple raffle prize giveaways. We hope everyone stays and winds down the day in good company.*

*Sponsorships and advertising opportunities available but will sell out fast. Contact us below for more information.*

- WHAT:** Premier Networking and Educational Opportunity for Large and Small Businesses
- Large and small business who want the opportunity to network formally and informally and who want to learn the latest about small business regulations, opportunities, and other relevant small business topics. Representatives from local federal military commands and agencies, local economic development and government agency representatives, SBA, and PTAC staff from around the region. Students also welcome.
- WHO:**
- WHERE:** **Kitsap Conference Center**  
100 Washington Avenue  
Bremerton, WA 98337  
<http://www.kitsapconferencecenter.com/>
- WHEN:** Tuesday, April 28, 2015  
8:00 – Registration  
9:00 AM to Noon – Briefings, Educational Courses, Breakout Sessions & Networking Events  
Noon to 1:30 PM – Luncheon featuring NAVFAC NW CO, CAPT Mark Geronime, CEC, USN  
1:30 to 3:50 PM – Briefings, Educational Courses, Breakout Sessions & Networking Events  
4:00 to 7:00 PM – Networking Happy Hour Reception and Raffle Giveaway

***More Information on the Reverse***

**SPEAKERS:**

Naval Facilities Engineering Command, Northwest  
U.S. Army Corps of Engineers Districts  
U.S. Coast Guard Facilities Design and Construction Center Seattle  
Washington State PTAC  
SBA Seattle  
KEDA

Kitsap Economic Development Alliance (KEDA) will be offering courses throughout the day. Topics include:

**BREAKOUT  
SESSIONS:**

- Stupid Things Contractors do to Mess Up Federal Contracts
- Bid Match and Other Resources with PTAC
- Marketing – Updating your Capability Statements
- Understanding Field Officer Overheads
- Subcontracting Opportunities with the BOSC
- New Labor Law Updates

**COST:**

Small Business: SAME Member \$60 Non Member \$80  
Large Business: SAME Member \$90 Non Member \$110  
Student, Uniformed Service Members & Government Employees: \$25  
Reception : SAME Member \$25 Non Member \$35 Student/Uniform/Govt \$10

**QUESTIONS:**

Manny Bautista at 206-972-0645 or email: [manny.bautista@blue-trident.com](mailto:manny.bautista@blue-trident.com)

**SPONSORS &  
EXHIBITS:**

Anna Anderson at 425-239-9804 or email: [anna.anderson@forbo.com](mailto:anna.anderson@forbo.com)  
Scott Baumler at 206-682-0120 or email: [scottb@mbbarchitecture.com](mailto:scottb@mbbarchitecture.com)

**FORMAL  
NETWORKING:**

Are you a small or large business that is interested in participating in the formal “speed-dating” style networking that will be taking place during this event? Stay tuned to our website for instructions on how to sign up.  
Or you can call: Kathryn Bost at 206-334-5021 or email: [kbost@sazan.com](mailto:kbost@sazan.com)

**REGISTER:**

<http://www.eventbrite.com/e/2nd-annual-pacific-northwest-same-small-business-symposium-registration-16208816005>

**INFO:**

<http://www.seattlesame.org/>



**WE HOPE TO SEE YOU ALL THERE!**

