

November 2020

ASCE SEATTLE NOVEMBER MEETING:

## CIVIL ENGINEERING IN HUMANITARIAN PROJECTS

JOIN US VIRTUALLY ON ZOOM  
TUESDAY, NOVEMBER 10  
5:30PM - 7:00PM



### Civil Engineering in Humanitarian Projects

**Wayne Chang, MRB, Hospital Logistics and Water & Sanitation**, will be sharing his experience of working for various humanitarian organizations and the projects he has worked on in the field from Africa to Asia. He will share and discuss the unique challenges that were faced with each project and how Civil Engineers play an important part in developing and maintaining critical infrastructure around the world.

**Projects include:**

Location: Puerto Rico  
Project: SARS-Covid-2 Emergency Exploration Team.  
Role: Water & Sanitation Engineer (WATSAN)

Location: Tanzania  
Project: Nduta and Nyarugusu Refugee Camp  
Role: Clinic Logistics and WATSAN

Location: South Sudan  
Project: Agok, Hospital and Mayom, Clinic  
Role: Hospital Logistics and WATSAN

[Click Here to Register & Add to Calendar](#)

**Date:** Tuesday, Nov. 10  
**Time:** 5:30pm-7:00pm

*After registering, you will receive a confirmation email containing information about joining the meeting.*



### November President's Column

By **Javier Homero Flores Cervantes, PhD, PE**  
ASCE Seattle Section President

Hello Seattle Section,

I'm happily writing this column on a chilly autumn night in this beautiful corner of the world that is the Pacific Northwest. The changing color of the trees is highlighting the shift from Summer to Fall, signaling one of many transitions taking place around us. One group in ASCE that helps facilitate smooth transitions, the Younger Member Forum, or YMF, is hosting our [Section dinner meeting](#) this month.

The YMF is a group of Section members 35 years of age and younger, that helps our younger members transition from being

[Section Officers Contact](#)

[Newsletter Editor Contact](#)

[Upcoming Events Calendar](#)

[Recent Board Meeting Minutes](#)

[Current Job Board Openings](#)

[Advertise in the Newsletter](#)

[Post a Job Opportunity](#)

[Younger Members Forum](#)

**DECEMBER 2020 NEWSLETTER CONTENT DEADLINE: NOVEMBER 20, 2020**

students to professional practitioners. The YMF achieves this by providing a safe environment where our recently graduated members can network with other young engineers, and learn about the professional practice outside of their firms and agencies.

From my perspective, the YMF is key to the success of our Section because of two reasons. First, they carry out an enormous amount of the outreach that our organization does in K-12 and at the University level. They do a terrific job setting up the Popsicle Stick Bridge Competition to engage high school students (this will be their 26th annual event!). They also engage and collaborate with the University Chapters of the Section (Seattle U. and U.W.) and engage internally with our ASCE Section (this month's joint dinner meeting, for example!). In addition, YMF organizes multiple volunteer opportunities that are open for the whole Section.

Secondly, the YMF provides internal networking and team building for younger ASCE members that create strong teams and relationships and serve as a foundation for the future of ASCE. I personally joined the Seattle Section through the YMF several years ago, and that experience helped me enormously professionally and personally. Professionally, it got me the informational interviews I needed as I was looking for a new job opportunity. Personally, I got to meet and play sports with a group of friendly engineers that cared about me and supported my growth as a leader for this organization. To this day I feel supported by my YMF cohort.

If you're a student, please look forward to joining YMF once you graduate, it's an exciting and supportive group that really can impact the future of your career as an engineer.

If you're already in YMF, I hope you're taking advantage of it! Your time in YMF allows you to cultivate relationships that will last throughout your career in ASCE and beyond.

If you're a more experienced engineer, please support the YMF through their mentorship programs or other help they may request. They are serving a fundamental function in the success of our organization.

This November 10, please attend our Joint Dinner Meeting with the YMF.

I would like to take this opportunity to thank all of our hardworking YMF officers who make all of their programs a reality. What you do is amazing.



**APPLICATIONS NOW OPEN FOR**

**THE RICHARD WILLIAMSON JONES MEMORIAL SCHOLARSHIP**

**STUDENTS APPLY BY JUNE 25, 2021**

**\$2,000 FOR YOUR EDUCATION!**

## Membership Survey

**Help the ASCE Seattle Section better serve you!**

As we transition into our new ASCE year, we want to hear from you! Please complete our brief [survey](#) to share what you'd like to see from our Section in the coming year.

Share with your coworkers and friends (ASCE membership not required). Participants will be entered into a raffle to win a \$25 gift card to GrubHub.

A stylized illustration of a city skyline in shades of red and orange. In the foreground, two figures in business attire stand on a platform, one pointing towards the city. A train is visible on an elevated track. Construction cranes and clouds are also depicted in the scene.

*NOMINATIONS NOW OPEN!*

2021 ASCE SEATTLE  
**LOCEA**  
AWARDS

*DUE 2.22.2021*

**LOCAL OUTSTANDING CIVIL ENGINEERING ACHIEVEMENT**

## ASCE Seattle Director Openings

The Seattle Section is seeking volunteers for **Director of Technical Committees**. Please reach out to [Seattle Section President](#) if you are interested in volunteering!

**Director duties include:**

- Provide training, guidance, and assistance to committee leaders as may be necessary.
- Encourage, support, and assist Committee Chairs to apply for grants.
- Act as the committee advocate on the Board.
- Encourage committee activities that will foster ASCE goals and enhance member activity.
- Meet with the Committee Chairs periodically to provide them with positive assurance of Board support.

**Technical Committees include:**

- Geotechnical
- Ports & Harbors
- Structural
- Sustainability
- Urban Development & Transportation
- Water Resources
- WASafe



# BRIDGING WASHINGTON

## The History, Structure, and Innovation of Washington Bridges



THURSDAY, NOVEMBER 12, 2020  
Free Virtual Event

Livestreamed from  
**Seattle Town Hall**  
5:00 PM

Please register at  
[www.sefw.org](http://www.sefw.org)

### The Structural Engineers Foundation of Washington **10th Annual Fall Forum**

The 7,300 bridges in Washington state are full of stories. Some are stories of history and culture, necessity and politics, or the challenges and marvels of engineering. Learning these stories connects communities more closely to the built environment and honors the design, engineering, and legacy of these significant spans. For the 10th Annual Fall Forum, the Structural Engineers Foundation of Washington is honored to host Maureen Elenga, local historian, and John Stanton, PhD., professor of civil engineering at the University of Washington, to present an educational evening showcasing bridges in Washington. Ms. Elenga will share the cultural, quirky, and even surprising histories of several local bridges, while Dr. Stanton will reveal engineering mysteries to bring them to life for the technical observer. The event will be of interest to designers, engineers, students – and anyone who travels over bridges.



**Maureen Elenga**  
Author/Historian



**John Stanton, PhD**  
Professor of Civil Engineering  
University of Washington

This **FREE EVENT** is made possible by donations to SEFW.  
Become a Friend of the Foundation at [www.sefw.org](http://www.sefw.org).  
Corporate partnerships also available.  
SEFW is a 501c3 registered nonprofit organization.

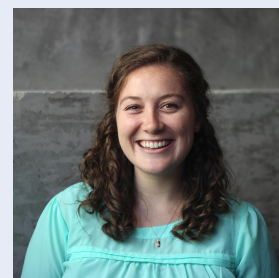
## Sustainability Committee Technical Presentation

### Living Building Challenge: The Role Civil Engineers Play

Thursday, November 19, 5:30pm - 7:00pm

#### **Haley Gardner, Manager, Buildings + Energy, ILFI**

Haley will present on the general role that civil engineers play in allowing project teams to achieve their sustainability goals, specifically when it comes to meeting targets set by rating systems. She will focus on the Living Building Challenge, including the Zero Carbon program aimed at reducing embodied carbon for heavy structural materials which structural engineers play a huge role in, in many ways. The Living Building Challenge is an international sustainable building certification program run by the International Living Future Institute (ILFI). Haley will also discuss the LBC Water Petal, particularly on stormwater management and wastewater management. She is looking to paint a



broad picture for where everyone fits in within creating a sustainable built environment and a living future!

**For more information and to register, [click here!](#) No registration cost.**

The Sustainability Committee is hosting a technical presentation every other month.

## Coming Soon! FREE Doer-Seller Workshop Series for Engineers!

ASCE Seattle is excited to welcome Mark Wainwright from [Wainwright Insight](#) for an upcoming virtual workshop series focusing on effective sales planning for doer-sellers.

**Workshop Overview:** In professional services firms, skilled practitioners like architects, engineers, and other consultants are often responsible for finding and winning new work. These busy Doer-Sellers must balance doing the work and winning the work as they deliver on their current contractual commitments and build long-term client relationships. How can Doer-Sellers prepare for important, high-stakes conversations and meetings with prospective clients? What planning can help Doer-Sellers gain a competitive advantage when pursuing a new business opportunity? How can your firm shift from a “vendor mindset” to become a trusted advisor to your long-term clients? This workshop series is designed to give busy Doer-Sellers the planning concepts and tools they need to be successful “part-time salespeople”.

**Intended Audience:** Those interested in effectively acquiring new clients and strengthening already existing client relationships. Professionals involved in revenue generation from any sized firm will find the content applicable.

**More information, including workshop dates, times, and how to register will be coming soon.**

**Speaker:** Mark Wainwright is the Owner and Principal of Wainwright Insight, an independent sales consulting firm focused on the professional services industry. Mark’s work addresses a specific need—to improve the sales acumen of busy Doer-Sellers through 1-on-1 sales coaching and part-time, or fractional, sales management. Mark has 25 years of sales and marketing experience, the majority spent finding and winning work with architecture, engineering, management consulting, and other professional services firms.

## Introducing WAsafe!

**WAsafe is a new program to train, enroll and dispatch volunteers to perform post-disaster building safety assessments.** These volunteers can assist city and county building officials whose workload, following a disaster such as an earthquake, flood, or catastrophic storm, is expected to be overwhelming.

There will be a pressing need to evaluate homes, businesses and shelters to confirm they are safe to occupy after a large disaster. Local governmental building officials will need additional labor resources to perform thousands of assessments on partially or significantly damaged buildings.

Volunteers will be deployed under Washington State’s Good Samaritan Laws (RCW 38.52.180 - Immunity from liability for covered volunteers).



The flyer for WAsafe (Washington State Safety Assessment Facility Evaluators) includes the following sections:

- WAsafe is a resource for Emergency Managers performing post-disaster building safety assessments** (highlighted in an orange box).
- OBJECTIVES:**
  - Assist building officials with building safety assessments following a disaster (earthquake, flood, storm)
  - Develop a group of qualified volunteer evaluators
  - Provide WAsafe volunteer evaluator training
  - Maintain registry of volunteer evaluators
  - Assist WA State EMD in calling up and dispatching volunteer evaluators
- COALITION:**

A coalition of four statewide non-governmental organizations and the Washington State Department of Health (DOH) has developed the new WAsafe program:

  - Washington Association of Building Officials (WABO)
  - Structural Engineers Association of Washington (SEAW)
  - American Institute of Architects (AIA), Washington Chapter
  - American Society of Civil Engineers (ASCE), Seattle Section

The database of volunteers is established and maintained on the DOH WAsafe system.
- CONTACT:**

For additional information, contact:  
Jan De Wit at [jde@waseafe.org](mailto:jde@waseafe.org)  
Mark Wainwright at [mark@wainwrightinsight.com](mailto:mark@wainwrightinsight.com)  
Paul Brizzola at [pbrizzola@waseafe.org](mailto:pbrizzola@waseafe.org)

[Check out the WAsafe flyer to learn more here!](#)

## Current Volunteer Opportunities

### North Branch Board & YMF

The North Branch is currently looking for motivated individuals to be part of the North Branch Board starting from October 2020 until September 2021. We have the officer positions of **President, Vice President, and Secretary/Treasurer** open. The North Branch serves approximately 150 members in the



counties of Whatcom, Skagit, San Juan, Island and Snohomish.

The 2020-2021 North Branch Board will help grow the Branch through member engagement and providing value to its members through events and communications such as membership meetings, email newsletters, and other means which the North Branch Board envisions as paths for growth to continue the momentum for the established Branch. The leadership positions will include the full support from the Seattle Section Board and its resources, leadership training opportunities for the new officers, and Society (ASCE National) level resources and contacts. Prior experience in ASCE leadership positions is not required. Please contact Tony Nguyen, Director of Branches, at [branches@seattleasce.org](mailto:branches@seattleasce.org) for more information.

The North Branch is also seeking YMF volunteers to continue to maintain and grow it's YMF. Please contact Mark Rose, North Branch YMF President, at [mrose@geoengineers.com](mailto:mrose@geoengineers.com) for more information.

## Diversity Committee

The Seattle Section is looking for committee members to revitalize the Diversity Committee. If you are interested, please fill out this [google form](#) and we will get started on creating a more diverse, equitable, and inclusive community for our membership! The first ask in the committee will be to propose modifications to the mission and responsibilities of the committee.

**Mission:** The mission of the ASCE Diversity Committee is to enhance access to the profession for minorities; to empower existing members to become visible mentors and counteract historical imbalances in the workforce; and to demonstrate that diversity and inclusion contribute to a healthy, productive work environment.

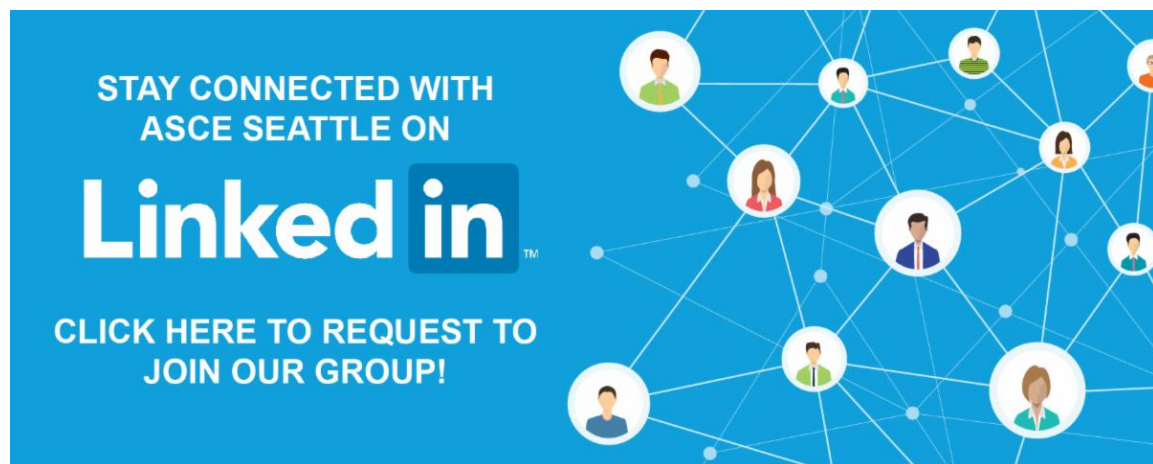
**Responsibilities:** The Diversity Committee shall be responsible for promoting awareness of ASCE policies with respect to diversity, as well as legislation and local regulations regarding equal employment opportunity.

## Legislative Committee

If you are interested in joining the [Legislative Affairs Committee](#), please reach out to [legislative@seattleasce.org](mailto:legislative@seattleasce.org).

ASCE Seattle Section is searching for volunteers to assist with the Legislative Affairs Committee. The level of Involvement can vary and can include providing engineering judgement on current legislative issues to assisting with lobbying. The committee is interested in a Legislative Drive-In to Olympia during the 2020 WA State Legislative Session.

The Legislative Committee functions in the political arena with focus on federal, state, county or other governmental issues that are of interest to the civil engineering profession; such as university engineering budget considerations, issues that affect the practice of or employment of civil engineers, and environmental issues of significance to the profession. The committee reviews proposed legislation and comments on it with regards to its effect on the civil engineering profession and may also be called upon to testify at Legislative hearings or for other governmental committees. It is also responsible for disseminating information from the Architects and Engineers Legislative Council (AELC) pertaining to state legislation. The committee typically sends at least one representative to the Society's annual Legislative Fly-In in Washington D.C.



STAY CONNECTED WITH  
ASCE SEATTLE ON

**LinkedIn**

CLICK HERE TO REQUEST TO  
JOIN OUR GROUP!

The graphic features a blue background with a network of white lines connecting various circular icons of diverse people, representing a community or network.

## ASCE Seattle Job Board

**Current Job Openings:**



## Project Engineer | City of Marysville

Posted: 10/29/2020

**SALARY:** \$7,654.00 - \$9,599.00 Monthly

**OPENING DATE:** 10/27/20

**CLOSING DATE:** Continuous

### POSITION SUMMARY:

**First review of applications November 10, 2020. Open until filled.**

This position performs a variety of professional engineering assignments in design, construction, or land development which requires the application of standard engineering principles and methods.

The work performed by this class requires incumbents to apply professional knowledge and expertise as well as established guidelines and alternatives to make non-routine judgments and recommendations to management regarding complex issues; incumbents operate independently and select appropriate methods to accomplish project assignments. Positions in this class perform the less technically complex design projects and have a narrower scope of responsibilities than the Senior Project Engineer. This position may provide project support to the Senior Project Engineer and engineering oversight to the Engineering Technician.

[Click to View Full Description & How to Apply!](#)

Advertise your current open positions to ASCE Seattle members today for only \$75 for the first month and \$50 for each subsequent month.

[Email communications@seattleasce.org to learn more.](mailto:communications@seattleasce.org)

## DID YOU KNOW?

All ASCE Seattle Members are always invited to join the Seattle Section Board Members at the monthly Board Meeting. Interested in attending? Check the [calendar on the ASCE Seattle website](#) for the meeting time and location and email [president@seattleasce.org](mailto:president@seattleasce.org) if you plan on joining us!

