



Wednesday,
December 14th
Doubletree Guest Suites
Paradise Room
16500 Southcenter Pkwy,
SeaTac, WA

5:30 Social

6:15 Dinner

***Baked Salmon** w/lemon dill cream sauce; **Chicken Piccata** (boneless chicken w/lemon caper sauce); **Eggplant Parmigiana** w/marinara sauce (vegetarian option)

*Please specify entree choice when making reservations.

7:00 Business Meeting

7:15 Break

7:30 Program including Q&A

8:30 Adjourn

Cost: \$30 Late Res: \$32

*Students half price (\$15)

The State of Green Building and the Role of Civil and Structural Engineers

Elizabeth Powers will discuss the current state of green building marketplace, the numbers and types of projects, who is doing it and where, the impact of green building rating programs like LEED™, and different types of green building technologies. She will also provide her thoughts on the important role civil and structural engineers play in green building and the opportunities for the field.

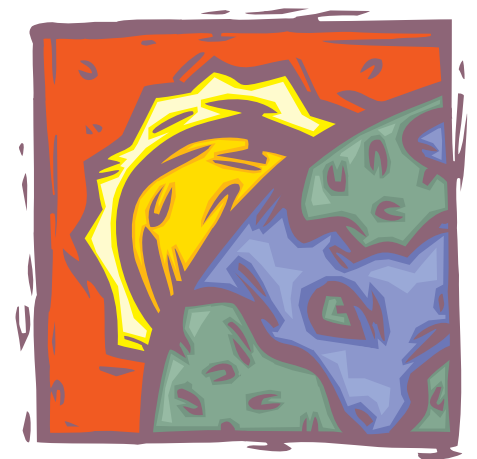
Speaker: Elizabeth Powers, O'Brien & Company, Project Manager and Associate Certificate, Sustainable Building Advisor, Seattle Central Community College—LEED™ Accredited Professional



Elizabeth Powers

As Project Manager for O'Brien & Company Elizabeth oversees the company's consulting on work on sustainable building projects, including LEED™ and Built Green projects. In this work she uses her extensive background working with construction industry on job-site recycling, green building products and natural drainage systems. She also brings to O'Brien her skills as an educator and project manager.

Recent projects include developing the Build It LEED™ training for the Cascadia Green Building Council which trains contractors on managing LEED projects, conducting green building charrettes for Group Health, the City of Burien, and an elementary school in Kauai, serving as LEED™ project manager on the Merrill Hall Renovation project at the UW Botanical Gardens, and consulting to the Resource Venture, a non-profit that provides free technical assistance on green building.



**Build Green.
Everyone Profits.**

Reservations by **Wednesday Dec 7th**

Please call 206.926.0482

or email: seattleascereservations@gmail.com

*Please specify entree choice when making reservations

Directions to Doubletree Guest Suites, Southcenter:

From North on I-5 - Exit on 154B- toward **SOUTHCENTER BLVD. & MALL/BURIEN/SEA-TAC AIRPORT**. Take the exit toward **SOUTHCENTER BLVD. & MALL**. Turn **LEFT** onto **SOUTHCENTER BLVD**. Turn **Right** onto **61st AVE S**. Turn **RIGHT** onto **SOUTHCENTER PKWY**. Drive 0.6 miles hotel is on the **LEFT**.

From South I-5 - Take 153 Exit (which is **SOUTHCENTER BLVD**. Exit). Go to first Exit ramp, make a **RIGHT** onto **SOUTHCENTER PKWY**. Hotel located on **LEFT** approximately 1/4 mile.

President's Corner by Sue Coffman



Sue Coffman
Tacoma/Olympia Section
President 2005-'06

As we head into December, I'd like to wish everyone a safe and happy holiday season. December also brings higher heating and energy bills, which reminds us to try to be more energy efficient or do things that make our homes more efficient like change furnace filters, seal leaks around doors and windows and use more energy efficient appliances and lighting.

Speaking of energy efficient, our December speaker will be doing a presentation of LEED™ (Leadership through Energy Efficient Design). This has become a new focus in design of buildings. OK, so there's no big cash prize awaiting the next person to build a LEED™-certified building. In fact, it can actually cost more to build; and, from what I've seen and heard, there is a lot of paperwork to actually get a building LEED™ certified. So, what's the point, you may ask. Well, some of the LEED™ design techniques will bring cost savings though lower energy usage. For instance, if you attended our last section meeting, you were able to tour a building that is applying for Gold LEED™ certification. One interesting feature that stood out to me was that cisterns collecting rainwater from the roof were totally supplying all the water needed to flush the toilets for the Fleet Services building.

So what about all the other 'green' building features that aren't saving any energy costs and actually cost more to put in? Well, many of those features are put in place to help conserve or protect our natural resources. I think there may be a tendency to put a lower emphasis on those features, but I have a feeling that in the future there will be some sort of cost incentive to install them. I'm sure we'll have to wait around to see, but I think it's also exciting that engineers have a new and interesting technique to incorporate into design. It gives us a new focus in design of buildings and at the same time can benefit our environment.

So far it seems as though it's been mainly public entities using LEED™ construction. As the 'eyes and ears' for our clients, we as engineers need to encourage the use of these techniques. I'm not saying you need to get all these buildings LEED™ certified. What I am saying is that you, the building/site engineer needs to know about these design techniques to be able to inform your client about the financial (and environmental) benefits of this type of design. I have a feeling that in the future we'll see every new building incorporating this type of design.

As a reminder, our December meeting is a joint meeting with the Seattle section. I'd encourage all of you to attend. Not only will you gain some knowledge about LEED™ design, you will also have an opportunity to meet and network with our Seattle ASCE members.

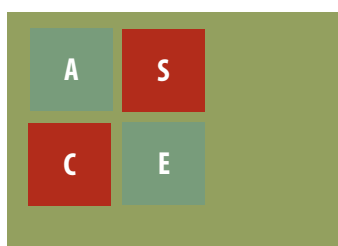
Happy Holidays!

Sue Coffman

Tacoma/Olympia Section President 2005-'06



See your ad in our newsletter. A business card sized ad will run from Sept - May for \$200. See details on page 4.



**Engineers Make
The Difference—
They Provide the Quality of Life!**

Civil Engineer Newsletter is published monthly from September to May for the Tacoma/Olympia Sections of the American Society of Civil Engineers.

To submit ads or articles of interest please contact the President of the section or the Editor. Information must be submitted not later than the 15th of the month to be included in the next publication.

For address changes/corrections, notify the Editor or the WEBmaster.

ASCE Testifies Before Senate on New Orleans Levee Breaches



As ASCE continues to examine the failure of the Gulf Coast levees during Hurricane Katrina, Lawrence H. Roth, P.E., G.E., F.ASCE, ASCE deputy executive director, testified before the Senate Committee on the Environment and Public Works about the observations and data gathered by the ASCE Levee

Assessment Team during recent onsite inspections of the levee breaches in Louisiana. Roth told the committee the ASCE assessment team gathered data "in an attempt to determine why certain sections of the levee system failed and others did not." Both the Roth testimony and the November 2nd appearance by Peter G. Nicholson, Ph.D., P.E., M.ASCE before the Senate Committee on Homeland Security and Governmental Affairs provided information and data to the Senate panels that could help prevent future disasters.

ASCE to Cosponsor Conference Addressing the Recovery and Rebuilding of Louisiana



Thomas Jackson



William Henry

ASCE and the National Trust for Historic Preservation are cosponsoring The Louisiana Recovery and Rebuilding Conference, Nov. 10-12, being presented by the American Institute of Architects in collaboration with the American Planning Association. The conference is being held in New Orleans to address the long-range recovery and rebuilding of Louisiana after Hurricanes Katrina and Rita. ASCE Past-Presidents William Henry, P.E., F.ASCE and Thomas Jackson, P.E., F.ASCE will be making presentations on possible options for developing design and planning principles that will guide Louisiana's efforts. The program will bring local and national design and planning professionals together with Louisiana public officials, civic and community groups, and business organizations to develop a body of principles that will guide the state's rebuilding efforts.

These articles from the ASCE.org website. <http://www.asce.org/asce.cfm>

Read more detailed information by visiting the ASCE website.

See Your AD Here!

Advertise in our newsletter!

Post a business card sized ad in our newsletter for \$200 per year. If you are interested, please contact:

Sue Coffman 253.594.7905
sue.coffman@cityoftacoma.org

Or Here!

Advertise in our newsletter!

Post a business card sized ad in our newsletter for \$200 per year. If you are interested, please contact:

Sue Coffman 253.594.7905
sue.coffman@cityoftacoma.org

Or Here!

Advertise in our newsletter!

Post a business card sized ad in our newsletter for \$200 per year.

If you are interested, please contact:

Sue Coffman
253.594.7905
sue.coffman@cityoftacoma.org



Section Calendar

Section Meetings are open and held once a month, September through May. Meetings are generally held on the second Tuesday of the month. Locations alternate between Tacoma and Lacey, and times vary between lunch and dinner meetings.

2005-2006

Section Meetings*:

Tuesday, January 10—Alaskan Way Viaduct, La Quinta Inn, Tacoma. Lunch

Friday, February 17—Dinner Meeting at St. Martin's, Engineer's Week

Thursday, March 9—Joint meeting with SAME, lunch meeting, location TBA

Tuesday, April 11—Honor's and Awards, St. Martins, dinner meeting

***DATE/TIMES/LOCATIONS ARE TO BE VERIFIED**

Local Board Meetings are open and generally held the first Monday of the month at 5:30pm. Locations vary. Please check the WEB site, this calendar, or contact the president for confirmation.

Board Meetings:

Monday December 5th 5:30pm Tacoma, location to be announced

<http://sections.asce.org/tacoly/tacoly.htm>

TRANSPEED Courses

The TRANSPEED Schedule Below is a list of the upcoming courses.

Please view our website at

<http://www.engr.washington.edu/epp/Transpeed/index.html> for specific course descriptions and dates. Click on the specific course link to view the course outline.

Culvert Repair and Rehabilitation

November 15-16, 2005, Seattle
Registration Fees: \$285 / \$450*

LRFD for Bridge Foundation Design

November 15-17, 2005, Sacramento, CA
Registration Fees: \$685

Basic Highway Capacity for Engineers and Planners

December 6-8, 2005, Lacey
Registration Fees: \$400 / \$575*

Fundamentals of Traffic Engineering

December 13-15, 2005, Seattle
Registration Fees: \$400 / \$575*

Work Zone Traffic Control Plan (TCP) Design

Jan 10-12, 2006, Seattle
Registration Fees: \$390 / \$590*

Advanced Highway Capacity Analysis for Engineers and Planners

Jan 17-19, 2006, Seattle
Registration Fees: \$485 / \$685*

*Washington State Public Agencies Fee / Private companies fee

Christy Pack

TRANSPEED Program Manager
UW Engineering Professional Programs
10303 Meridian Ave N #301
Seattle, WA 98133
1-866-791-1275 toll free
direct 206-543-5539 206-543-2352 FAX
croop@u.washington.edu

See the website at

<http://www.engr.washington.edu/epp/Transpeed/index.html> for more.

2005/6 Winter/Spring Professional Development Short Courses

For a complete description of the course and registration information visit our website <http://www.engr.washington.edu> or call us at: Engineering Professional Programs, University of Washington, phone: 206.543.5539 (fax) 206-543-2352 or (toll free) 1.866.791.1275

Stephanie Strom, Program Mgr:

ssstrom@u.washington.edu

(direct) 206-685-9682

Stacy Williamson, Prog. Coord.

stacyw@u.washington.edu

(direct) 206-543-5743



Tacoma/Olympia Section Board **2005 - 2006**

President

Susan Coffman...253.594.7905
sue.coffman@cityoftacoma.org

President-Elect

Michael Hale
mhale@cityoftacoma.org

Secretary

Ben Laurie...253.474.9449
benlaurie@sitts-hill-engineers.com

Treasurer

Morris J. "Gus" Fant...253.922.2332
gusf@ahrengineers.com

Director

Jason Moline...253.502.2239
jmoline@cityoftacoma.org

Director (2-year)

Mustafa Mohamedali...360.705.7261
MohameM@wsdot.wa.gov

District 12 Director

Greg DiLoreto...503.848-3032.
Greg@tvwd.org

Younger Member Chair

Wes Jones...253.474.9449
wesjones@sitts-hill-engineers.com

Past-President

Kathy Hargrave...253.474.9449
kathyhargrave@sitts-hill-engineers.com

Newsletter Editor

Nancy Searle...253.564.5885
dekedesigns@aol.com

WEBmaster

Richard Swanson...360.455.3161
rswanson@skillings.com or
richardswanson@comcast.net



We're on the web!

<http://sections.asce.org/tacoly/tacoly.htm>