

Directions to Landmark Convention Center:

I-5 to Exit 133 (I-705) to 15th Street; uphill past the Sheraton Hotel; right on Market; go 2 blocks past Municipal Bldg. to St. Helens AV; Landmark Convention Center 3 blocks on the right.

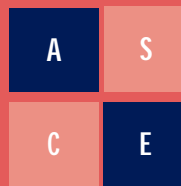


Tacoma Olympia Section ASCE Civil Engineer THE NEWSLETTER



JANUARY 2002

Civil Engineers Make the Difference! They Provide the Quality of Life!



Nancy Searle
950 S. Locust Ln
Tacoma WA 98465



FIRST CLASS MAIL
U.S. POSTAGE
PAID
TACOMA WA
PERMIT NO. 1020

Civil Engineer Newsletter is published monthly from September to June for the Tacoma/Olympia Sections of the American Society of Civil Engineers.

To submit ads or articles of interest please contact the President of the section or the Editor. Information must be submitted no later than the 15th of to publication.

For address changes/corrections, notify the Editor or the WEBmaster.

to



Lunch Meeting TUESDAY, January 15

Tacoma Landmark
Convention Center
47 St Helens, Tacoma

11:30am...Social
Noon...Lunch
12:45pm...Program

\$20.00 per person
1/2 price for students*

Program is FREE to all

RSVP by eod, Friday,
January 11

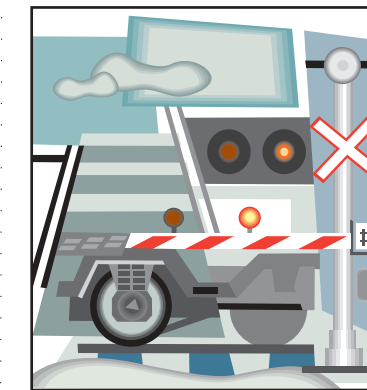
Susan Melton, 253.572.4975
Dr. Igharo, 360.438.4322

Note: Members with
reservations who do not
attend will be billed.

*** ATTENTION STUDENTS:
"Half Price Dinner."**

The Tacoma/Olympia Section
pays for one half of your
dinner. Please advise when
you call in your reservation
that you are a student.

Lunch Meeting



South Sound Transit
Authority (STA)
Light Rail

Tacoma Link Light Rail Line
Segment Program

Speaker: Ms. Sue Comis, Project Mgr.
Bechtel, Richland, WA office

Ms. Comis will provide information on
planning and development; construction

schedule; various land and property changes and improvements; and
stations along the route (from Freight House Square along 25th to Pacific,
Pacific to 17th, 17th to Commerce and Commerce to 9th Street) of this
important project.

6th Annual SEAW EDUCATIONAL Trade Show & Seminars

Wednesday February 20th

Best Western Executive Inn, Tacoma/Fife

Trade Show: 5-9pm

Seminars: 4-5pm & 5-6pm

Cost: **FREE** for **Pre-Registered** attendees

For Reservations: email seawswchapter@attbi.com
or leave a message at 253.565.0769.

Deadline February 11th.

Seminars are FREE and are on a first-come basis.

Reservations are for complimentary buffet and refreshments.
See ASCE Website for complete trade show & seminar information

2001 - 2002 Board

President

R. Michael Hale...253.591.5766
mhale@ci.tacoma.wa.us

Treasurer

Scott Sawyer...360.459.2214
ssawyer@ch2m.com

District 12 Director

James Carlsen...253.383.2422
jcarlsen2ahbl.com

President-elect

Chris Beckman...253.874.8046
sidecar.wa@netzero.net

Director PNC Rep

Bernard Hargrave...253.764.6839
Bernard.L.Hargrave.Jr@hws2.usace.army.mil

Past President & WEBmaster

Richard Swanson...360.455.3161
Rswanson@skillings.com
richardswanson@attbi.com

Secretary

Sue Martin...253.594.7905
smartin3@cityoftacoma.org

Director

Connie Linden...253.383.2422
clinden@ahbl.com

Editor

Nancy Searle...253.564.5885
dekedesigns@aol.com

President's Corner

R. Michael Hale

Public Works Department
747 Market Street, Room 332
Tacoma WA 98402-3769
mhale@ci.tacoma.wa.us

First I want to extend Happy New Year wishes to all members of the ASCE Tacoma/Olympia Section and their families. May you all be blessed with good health, prosperity and safe keeping. I am certainly looking forward to the new challenges and opportunities that the New Year will provide.

We had quite an enjoyable and educational meeting in December with the Seattle ASCE Section. It is very nice to have the opportunity to meet and speak with our neighbors to the north. We also did our good deed and raised \$50 through the President's Raffle that went to the Salvation Army's Giving Tree.

Well, we are officially into the year of ASCE's 150th Anniversary. Although some of the main events and celebrations won't happen until later in the year, it's good to start thinking and enacting the things we can do locally. So, if you have any ideas for how we can make this Anniversary a memorable one, please let someone on the Board know. As you may know from previous newsletters, the West Point Bicentennial Bridge Design Contest for students is in progress and will close for entries February, 28th—so get out there and give your local participating school a hand!

I would like to take some space to discuss membership. At our Section meetings thus

far this year, attendance has been good, although I have not seen many new faces. It is always a pleasure to see familiar faces at our meetings but I would like to see some new faces as well. As we begin 2002, I want to encourage you to spread awareness of ASCE and to invite people who are not currently members to attend some of our meetings. We know your time is valuable, so just show your enthusiasm for ASCE by inviting someone to join you at a meeting. We are a dynamic section and we want to continue to grow and move ahead in the world of Civil Engineering. Let your peers know that ASCE is there for them and can be an aid to them as they pursue their professional

careers. And, ASCE happens to have an Awards Program for new membership recruitment—maybe we can win!

I see the coming year as an opportunity to step up and do what is necessary to ensure and provide a better way of life. It's that "CAN DO" attitude of Civil Engineers that we depend on to make things happen.

Hope to see you and a friend at the next meeting!

—R. Michael Hale, President,
Tacoma/Olympia Section



ASCE 150th Anniversary



Building a Better World

Annual Conference Kicks Off Celebration

October 11-14 was the scene of ASCE's official kick off for the yearlong 150th Anniversary Celebration. The celebration will continue through the year ending with the grand finale at the 2002 Annual Conference in Washington, D.C., Nov. 3-6, 2002. There are many planned activities during the coming year. Visit the national website for details and watch for more in this newsletter.

Seminar Structural Welding:

Design & Specification & Steel Connections—Seismic Applications.
Two one-day seminars: Portland, April 18 & 19; Seattle, April 22 & 23.
Presented by Steel Structures Technology Center

Calendar of Events

2002

Tuesday, Jan. 15

Section Meeting 11:30am
Lunch meeting - Tacoma
Proposed topic: South sound
lite rail. Location to be announced.

Friday, Feb. 22

Joint Society Meeting at St.
Martins College

Wednesday, Mar. 13

Joint Meeting with Military
Engineers

Tuesday, Apr. 9

Honors & Awards Night;
Skillings—NY Twin Towers
St. Martins College

Tuesday, May 14

Museum of Glass, Tacoma

Section Meetings are open and held once a month, September through June. Meetings are generally held on the second Tuesday of the month. Locations alternate between Tacoma and Lacey, and times vary between lunch and dinner meetings.

Local Board Meetings are open and generally held the first Monday of the month at 5:30pm. Locations vary. Please check the WEB site, this calendar, or contact the president for confirmation.

Upcoming Engineering Professional Programs

Effective Writing for Technical Professionals

February 20, 25, 27, March 4 & 6, 2002, Seattle

Cold Regions Engineering Short Course

Nov. 1-5, Seattle
Jan. 17-21, Seattle
Successful completion satisfies the arctic engineering course requirement for a professional license to practice engineering in the state of Alaska.

Drilling and Blasting Techniques for Construction and Quarrying

Feb. 2002

11th Northwest On-site Wastewater Treatment Short Course and Equipment Exhibition

April 3-4, Seattle
First presented in 1976, this course has provided a venue for national and international experts to present current research and new information related to the small-scale, decentralized sewer and wastewater treatment concept. The importance of this method is demonstrated by the fact that it is used in approximately one in four homes in North America. Attend this course to learn about new developments in the small scale wastewater management field.

FE/EIT and PE Exam Refresher Courses

Three courses offer engineers intensive preparation for the State of Washington qualifying examinations in April 2002. Evening courses held on UW campus, Seattle. Features a review of relevant topics for each exam, taught by experienced faculty.

FE/Engineer-In-Training Refresher Course

Mon. & Wed., 6:30-9:00pm;
Feb. 11 - Mar. 28; Early reg.
\$495

Mechanical Engineer Prep for the PE

Tues. & Thurs., 6:30-9:00pm;
Feb. 19 - Mar. 28; Early reg.
\$645

Civil Engineering Prep for the PE

Tues. & Thurs., 7:00-9:30pm;
Feb. 26 - Apr. 2; Early reg. \$495

Registration and Information Engineering

Professional Programs
UW, Box 358725
10303 Meridian AV N
Seattle WA 98133

toll free 1.866.791.1275
from Seattle, 206.543.5539
fax 206.543.2352

email:

<uw-epp@enr.washington.edu>

TRANSPEED courses

Jan. 23-25 Seattle

Basic Highway Capacity

Jan. 28-29 Spokane

Construction Inspection of
Public Works Projects

Jan. 31-Feb 1 Spokane

Public Works Construction
Project Management

Feb. 6-8 Seattle

Manual on Uniform Traffic
Control Devices (MUTCD) *
Revised Course!

Feb. 11-13 Lacey

Manual on Uniform Traffic
Control Devices (MUTCD) *
Revised Course!

Questions? Contact:
croop@u.washington.edu
1.866.791.1275

