



Civil Engineer

THE NEWSLETTER

MAY 2005

MAY SECTION MEETING

TUESDAY,
MAY 10TH

Sheraton Tacoma
3RD Floor Conference
Room
1320 Broadway Plaza
Tacoma, WA

(see page 3 for directions)

11:30am - 1:00pm

*Cost: \$20 per person

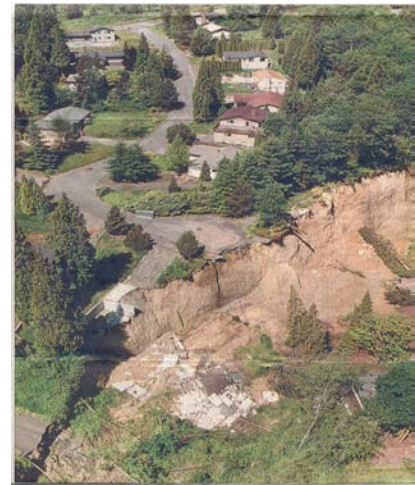
* Students half price

To make your reservations:

Please contact Kay Hoke @
253.591.5760

or e-mail
khoke@ci.tacoma.wa.us by
4:00 pm, Thursday, May 5TH

The Aldercrest- Banyon Drive Landslide Kelso, Washington 1998 AND The Rest of the Story



Speakers: Jon W. Koloski, LG, LEG and Donald L. Law

Jon received his B.S. in geology from the University of Washington in 1963. As an undergraduate he also completed numerous undergraduate and graduate classes in engineering and geology. Jon's postgraduate working career includes 42 years as an engineering geologist for private-sector consulting firms. He is now a Senior Principal with GeoEngineers, Inc, based in Redmond, Washington. He was co-founder of that firm in 1980; GeoEngineers now has 13 offices and a staff of approximately 260.

Jon is a career-long member of the Association of Engineering Geologists. He is licensed as a Professional Geologist and certified as an Engineering Geologist in Washington, Oregon and California. He has been an invited lecturer to several Continuing Law Education Seminars pertaining to geologic hazards and he was an adjunct professor teaching environmental geology at the University of Washington – Tacoma in 2002. He

has been the principal engineering geologist for several thousand geologic and/or geotechnical investigations. These investigations pertain to a wide range of applications including gravel and rock quarries, ground water resources, major building foundations, highways of all scales, cross-country pipelines, industrial and residential land development, and landslide and abandoned mine hazard mitigation. In addition to specific technical projects, Jon's consultation has been requested by numerous governmental jurisdictions concerning land use regulations that pertain to geologic or geotechnical issues.



Biography: Donald L. Law

Don received his B.A. from the University of Michigan in 1968 and his J.D. from the University of Michigan Law School in 1971. He served in the U.S. Marine Corps from 1972 to 1975. Upon leaving the military, he moved to Olympia, Washington to become an Assistant Attorney General in the Tort Claims Division.

Since 1981 Don has been in private practice in Olympia, specializing in municipal liability in the firm that he founded. Mr. Law is a member of the Thurston County, Washington State and American Bar Associations, the Defense Trial Lawyers Association, and the Defense Research Institute. In 1989 he served as Chairman of the Litigation Section of the Washington State Bar Association and for several years he served as a Trustee with the Federal Bar Association.

Mr. Law served as the attorney for the City of Kelso throughout the entire Aldercrest saga. Specifically he defended the class action lawsuit filed against the City in July of 1999. He also represented the City in the FEMA proceedings and was involved in the review and changes to the City's regulatory and permit processes pertaining to land development projects.



Directions to Sheraton Tacoma:

From I-5 :

Take the I-705 N/WA-7 S exit- EXIT 133- toward CITY CENTER.

Take the exit on the LEFT toward CITY CENTER/TACOMA DOME.

Merge onto I-705 N via the exit on the LEFT toward CITY CENTER.

Take the A ST. exit on the LEFT toward WA-509 N/CITY CENTER.

Take the S. 15 STREET ramp toward PACIFIC AVE.. Turn SLIGHT LEFT onto S 15TH ST.

Turn RIGHT onto BROADWAY.



President's Corner by Kathy Hargrave

ELECTION TIME!

It is that time again. What time you may ask? It is time to elect new officers for the 2005-2006 year. The nice thing is that we have some volunteers. We can always use more. The nominations are for:

President:	Susan Coffman, P.E.
President Elect:	Michael Hale, P.E.
Secretary:	Ben Laurie
Treasurer:	Gus Fant, P.E.
Director:	Jason Moline, P.E.,
Director:	Mustafa Mohamedali,
Younger Member Chair	Wes Jones
Past President	Kathy Hargrave, P.E.

We need to have more people involved on the board. It is desirable to have people going through the chairs in a steady stream. We seem to be working toward a backwater with respect to participants. I cannot stress this enough, if you are interested in participating on the board, talk to a board member, attend our meetings they are monthly from September to May. Board meetings are on the first Monday of the month and Section meetings are on the second Tuesday of each month. Locations alternate between Tacoma and Olympia.

This is our section and we can make it whatever we want it to be. I am encouraged to have great sponsorship and participation at the Puyallup Fair. I suspect that there is more energy and passion for our section than we have been investing until now. Please ask yourself if there is something that you could do with ASCE that would be satisfying and rewarding.

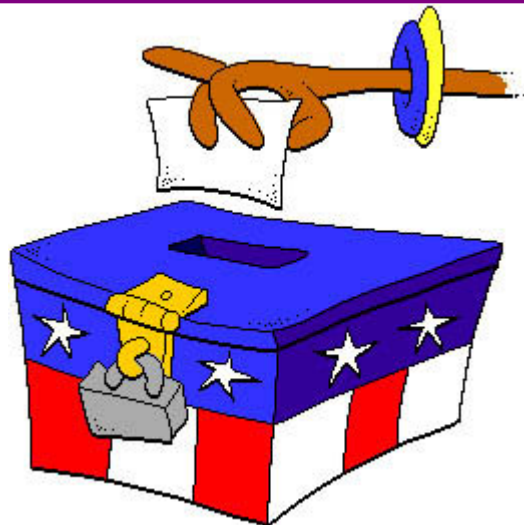
The engineers at all stages in their development can give of their time and talents and be refreshed and renewed by our membership. We really are a terrific group.

Things to look forward to on the horizon are this month's meeting with Jon Koloski from GeoEngineers, the fair and September's joint meeting with SEAW.

Please be sure to fill out a ballot and vote by May 31, 2005. Ballots are to be mailed to Mustafa Mohamedali at 1515 Maple Ridge Drive NE, Olympia, Washington 98506.

Kathy Hargrave

Tacoma/Olympia Section President 2004-2005



2005-2006 Tacoma/Olympia Officer Ballot

President*: Susan Coffman, P.E.

President Elect: Michael Hale, P.E.
President Elect: Write in: _____

Secretary: Ben Laurie
Secretary: Write in: _____

Treasurer: Gus Fant, P.E.
Treasurer: Write in: _____

Director*: Jason Moline, P.E., (2nd year of 2 year term)

Director: Mustafa Mohamedali, P.E. (1st yr of 2-yr)
Director: Write in: _____

Younger Member Chair: Wes Jones
Younger Member Chair: Write in: _____

Past President*: Kathy Hargrave, P.E.

Nominating Committee: Vote for Three

Tina Nelson, P.E. _____
Bernie Hargrave, P.E. _____
Louis Boitano, P.E. _____
Connie Linden, P.E. _____
Jim Brigham, P.E. _____
Bob Dahmen, P.E. _____
Skip Bush, P.E. _____
Write in: _____
Write in: _____
Write in: _____

* Denotes a position that has previously been elected and include President, Past President and the second year Director.

Please return your ballot by **May 31, 2005** to:

Mustafa Mohamedali
1515 Maple Ridge Drive, NE,
Olympia, Washington 98506

Section Calendar

2005

May- Last section meeting before summer break. May 10th.

September- Puyallup Fair and Joint meeting with SEAW. Week of September 19th, date to be confirmed.

Section Meetings are open and held once a month, September through May. Meetings are generally held on the second Tuesday of the Month. Locations alternate between Tacoma and Lacey, and times vary between lunch and dinner meetings.

Local Board Meetings are open and generally held the first Monday of the month at 5:30 pm. Locations vary. Please check the website, or contact the president for confirmation.

<http://sections.asce.org/tacoly/tacoly.htm>

TRANSPEED Courses

Please view our website at <http://www.engr.washington.edu/epp/Transpeed/index.html> for specific course descriptions and dates. Click on the specific course link to view the course outline.

Christy Pack
TRANSPEED Program Manager
UW Engineering Professional Programs
10303 Meridian Ave. N #301
Seattle, WA 98133
1-866-791-1275 toll free
direct 206-543-5539 fax 206-543-2352
croop@u.washington.edu

Work Zone Traffic Control Plan (TCP) Design
Lacey, May 3-5, 2005

Traffic Engineering Operations
Seattle, May 9-11, 2005

2005 Winter/Spring Professional Development Short Courses

For a complete description of the course registration information, visit our website <http://www.engr.washington.edu> or call us at: Engineering Professional Programs, University of Washington, phone: 206-543-5539, fax 206-543-2352 or toll free 1-866-791-1275

Stephanie Strom, Program Manager:
sstrom@u.washington.edu
(direct) 206-685-9682
Stacy Williamson, Prog. Coordinator:
stacyw@u.washington.edu
(direct) 206-543-5743

Infiltration Facilities for Stormwater Quality Control
May 10-11, 2005 | Seattle, WA

Project Leadership Workshop
May 18-19, 2005 | Seattle, WA

Tacoma/Olympia Section Board 2004 – 2005

President

Kathy Hargrave (253) 474-9449
KathyHargrave@sitts-hill-engineers.com

President-elect

Susan Coffman (253) 594-7905
Sue.Coffman@cityoftacoma.org

Secretary

Mustafa Mohamedali (360) 705-7261
MohameM@wsdot.wa.gov

Treasurer/PNC Rep

Bernard Hargrave (253) 764-6839
Berndard.L.Hargrave.Jr@nws02.usace.army.mil

Director

Jason Moline (253) 502-2239
jmoline@ci.tacoma.wa.us

Director (2-year)

Gus Fant (253) 922-2332
gusf@ahrengineers.com

District 12 Director

Greg DiLoreto (503) 848-3032
Greg@tvwd.org

Younger Member Chair

Wes Jones (253) 474-9449
WesJones@sitts-hill-engineers.com

Past President

Connie Linden (253) 383-2422
clinden@aol.com

Newsletter Editor

Nancy Searle (253) 564-5885
dekedesigns@aol.com

WEBmaster

Richard Swanson (360) 455-3161
rswanson@skillings.com or
richardswanson@comcast.net