

To view on the web [click here](#).

We hope that you enjoy this new edition of the ASCE Wisconsin Section Newsletter.



# ASCE

## WISCONSIN SECTION

*In This Issue:*

**PRESIDENT'S MESSAGE**

**INFRASTRUCTURE REPORT CARD DEVELOPMENT**

**OUTSTANDING SENIOR ENGINEERING STUDENT AWARDS**

**THE POWER OF COLLABORATION**

**OUTSTANDING YOUNGER MEMBER AWARD**

FUTURE CITIES

---

ASCE WISCONSIN SECTION SPRING TECHNICAL CONFERENCE

---

THANK A VOLUNTEER NOMINATIONS

---

AROUND THE SECTION

---

ENGINEERS WITHOUT BORDERS

---

SECTION ADMINISTRATIVE MANUAL UPDATES

---

GET-TO-KNOW FEATURE

---

## BOARD OF DIRECTORS

### **President**

Justin Bilskemper, P.E.  
Strand Associates, Inc.  
Justin.bilskemper@strand.com

### **President Elect**

Jared Wendt, P.E.  
CH2M  
Jared.Wendt@CH2M.com

### **Vice President**

Kenneth Mika, P.E.  
O'Brien and Gere  
Ken.Mika@obg.com

### **Past President**

Peter W. Nilles, P.E.  
Milwaukee County  
Pmbnilles@gmail.com

### **Secretary**

Jennifer Schaff, P.E.  
County Materials Corporation  
Jennifer.Schaff@countymaterials.com

### **Treasurer**

Marty Hanson, P.E., F.ASCE  
Starboard Tack Consulting  
HansonM@StarboardTackConsulting.com

### **Director at Large**

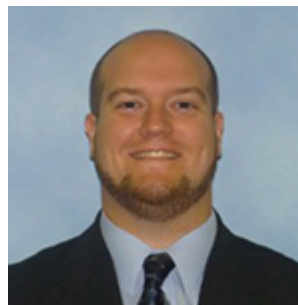
Larry Buechel, P.E.  
Waste Management  
LBuechel@wm.com

### **Director at Large**

Jessie Jefferson, P.E.  
MSA Professional Services, Inc.

## **President's Message**

by: Justin Bilskemper



As I watched my son tear around the living room, not a care in the world (except for Teddy Grahams and Daniel Tiger), I can't help but wonder what the future has in store for him. As civil engineers, what are we doing to make sure that our children have the same, or better, quality of life that we have?

The nation's infrastructure, as a whole, is in dire need of additional funding. This is evidenced by ASCE's [2017 Report Card](#), which gave it a cumulative grade of D+. What does this mean? It means the general state of infrastructure is poor and at risk. Many elements are reaching the end of their service life and there is a strong risk of failure. Decades of underinvestment have created a tipping point where we need meaningful action. ASCE has examined the economic impacts of deteriorating infrastructure, which can be found in their latest [Failure to Act](#) series.

Jesse.Jefferson@gmail.com

**Director at Large**

Matt Dahlem, P.G.  
Fehr-Graham & Associates, LLC  
MDahlem@fehr-graham.com

**Director at Large**

Andrew Walters, P.E.  
American Engineer Testing, Inc.  
AWalters@amengtest.com

**Branch Director, Southeast Branch**

Kyle Bareither, P.E.  
O'Brien and Gere  
Kyle.Breither@obg.com

**Branch Director, Northwest Branch**

Kristopher Roppe, P.E.  
ISG  
Kris.roppe@is-grp.com

**Branch Director, Southwest Branch**

Laura Rozumalski, P.E.  
Fresh Water Engineering, LLC  
LRozumalski@freshwatereng.com

**Branch Director, Fox River Valley Branch**

Ryan Betker, P.E.  
OMNNI Associates  
Ryan.Betker@omnni.com

The key solutions to this problem are investment, leadership/planning, and preparing for the future:

- Perhaps the most important of these three key solutions is investment. We need increased, long-term, consistent investment to close the infrastructure funding gap. The nation has not yet been seen the true cost of maintaining and replacing the infrastructure that was constructed over the past 40 to 50 years. The public needs to accept that there will be an increase in rates and fees in an acceptable form that is both sustainable and equitable.
- To accomplish the investment solution, we need leadership that spearheads the effort to make sure the investments are spent judiciously while also planning for future life cycle costs. This leadership is required at all levels, including local, state, and federal government, private sector, business, labor, and non-profits. This will result in a clear vision for the future of our infrastructure.

- Lastly, we need to prepare for the future of infrastructure by embracing emerging technologies, supporting R&D into innovative materials, and making sure the new infrastructure is resilient hazardous events.

What can we do as individuals to help shape this future?

- Familiarize yourself with the issues.
- Start a conversation with friends and co-workers or on social media.
- Attend public hearings and board meetings.
- Write a letter your local, state, or national elected officials to voice your thoughts.
- Become an ASCE [Key Contact](#) to keep up with developing public policies.
- Help your governmental clients understand the importance infrastructure funding and life-cycle costs.

As a Section, we recently voted to approve Greg Schroder (current Public Affairs committee chair) as the Wisconsin State Advocacy Captain. Greg will serve as the liaison between the Section and ASCE Government Relations staff. We also have a goal to revive the Wisconsin State Report Card, last updated in 2007, and are currently looking for motivated members to assist in the effort.

Lastly, [Engineers Week](#) this year is from February 18 - 24. Help spread the word and celebrate the engineering profession with us!

Justin R. Bilskemper, P.E., M.ASCE  
ASCE WI Section President

## **ASCE Infrastructure Report Card for Wisconsin**

by: Martin Hanson

The ASCE Wisconsin Section board is exploring the opportunity to develop an updated Infrastructure Report Card for Wisconsin. Report cards for Wisconsin were previously published in 2003 and 2007. The board is announcing this project with hope that our members will be motivated to volunteer their expertise and time to work on the project. In addition, we need members to reach out to their project partners, who many not be ASCE members, for assistance.

ASCE National publishes a national report card every four years. Last year the 2017 Infrastructure Report Card was published with an overall grade of D+. Data in that report has been cited in national network news as well as in testimony before congressional committees. It has evolved over the years and gained substantial credibility.

The national report card evaluates and grades 16 different categories. The state report card does not need to address all 16; we can choose those areas that have the biggest impact on the state's population and/or economy. Currently the ASCE National Report Card data for Wisconsin (<https://www.infrastructurereportcard.org/state-item/wisconsin/>) contains an estimations for conditions in our state. A new state report card is needed to provide confirmation and document the state's current conditions and needs.

It is important to recognize that the report card is not a reflection on public agency, state, county, city, or town, performance. Rather, it is a public awareness piece to help people recognize the state of the infrastructure after years of deferred maintenance and lack of construction to meet new and growing capacity demands. Some lack of action is raising risks for public health safety and welfare as well as raising lifecycle costs for infrastructure.

We are looking for experienced engineers in all areas of infrastructure to work on an infrastructure area subcommittee. We believe it will benefit the final product if the subcommittees is composed of engineers from public practice, private practice, and academia. These three areas bring a complete perspective of the issues under study.

The section board has voted to support the efforts of a new ASCE Infrastructure Report Card for Wisconsin. The ASCE National office will also be providing guidance and assistance to the project team. If you feel motivated to help us with this important project, or you would just like to receive more information, please contact Justin Bilskemper, Wisconsin Section President at [Justin.Bilskemper@strand.com](mailto:Justin.Bilskemper@strand.com). We would like to designate a project manager and establish infrastructure subcommittees this spring.

## **Outstanding Younger Member in the Private Sector Award to Kyle Bareither**

by: Ken Mika



It comes with great pleasure to announce that Kyle Bareither was awarded the Outstanding Younger Member in the Private Sector on January 26, 2018 at the ASCE Central Region Younger Member Council in Omaha, Nebraska. Mr. Bareither has been a leader in the ASCE Wisconsin Section and Southeast Branch for several years. He has held office in the Southeast Branch Younger Member Group and Southeast Branch and has served on various Spring Technical Conferences, Annual Meeting, and STEM Expo Planning Committees, including being a co-chair on STEM Expo and the upcoming Spring Technical Conference.



Currently Mr. Bareither is the Southeast Branch President-Elect and Wisconsin Section Southeast Branch Director. Besides being a leader, he has become a driver in Southeast Wisconsin for community outreach with ASCE, Special Olympics, and Leukemia & Lymphoma Society. Kyle's leadership is not limited to the ASCE platform, as he has also been on an accelerated leadership path in his profession. Kyle quickly became responsible for many projects at OBG, formerly NRT, dealing with sediment contamination and site remediation and investigation. The ASCE Wisconsin Section Congratulates Mr. Bareither on his success.



### **ASCE Wisconsin Section Membership-at-a-Glance**

- 2,019 Wisconsin Section Members
- 39 New Members
- 58 Affiliate Member
- 371 Associate Members
- 4 Distinguished Members
- 55 Fellows
- 1,117 Members
- 414 Student Members

### **Professional Development Opportunities**

5 FREE PDH hours through ASCE!  
Don't forget your annual ASCE membership includes five free professional development hours (PDH). Those PDHs can be redeemed using the On Demand Webinar offering available on the ASCE website.

### **Outstanding Senior Engineering Student Awards**

by: Jennifer Schaff, ASCE Wisconsin Section Secretary

Every year the Wisconsin Section reaches out to student chapter faculty advisors requesting nominations for an outstanding student studying civil engineering. This award is given to an

individual currently enrolled as a senior and an ASCE student member "for individual achievement/service that demonstrates excellence in engineering academic achievement and service to the profession." An award certificate, symbolizing the achievement, as well as a monetary gift is presented to the winning student(s) at the Spring Technical Conference. Per the Administrative Manual, up to two awards of equal value shall be presented annually.

Nominations were requested by February 14th in letter or email format to the Wisconsin Section of ASCE at [wi.sec.asce@gmail.com](mailto:wi.sec.asce@gmail.com). As of the writing of this article, the Wisconsin Section has received only one nomination. ASCE student chapters are located at Marquette University, University of WI Madison, University of WI Milwaukee, University of WI Platteville, and Milwaukee School of Engineering. Recent events may lead to a new student chapter forming at University of WI Green Bay.

## **The Power of Collaboration**

Opinion by: Public Affairs Chairman, Gregory Schroeder, P.E.

I think I hear this phrase nearly every day, "the power of social media." The power of social media is the power to collaborate with members of a group to which you belong. Did you know that ASCE has a platform called ASCE Collaborate? And did you know that Wisconsin section alone has over 2000 members? I know this because I went to ASCE Collaborate and saw all of your names!

I am concerned that many veterans, churches, and other organizations have been losing members at an accelerating pace for a long time. ASCE is not in that category, but we need to remain active to be relevant, and to grow.

I am not pointing fingers. Well I am, but there are four pointing at me. My profile needs to be embellished, not that my photo will count as an embellishment. My articles need to be posted. It will be my responsibility to get that corrected.

Now this is interesting. There are replies to two of my section newsletter articles posted to the Wisconsin community page. They are both pertinent and interesting; however, no replies or discussions have been generated. It would be productive to continue those conversations with some comments and some thumbs up for the efforts of those individuals.

I don't want to oversell ASCE Collaborate. It has a few quirks, so be prepared, and like learning any new software, expect to spend a little time just clicking here and clicking there. We, as a collaborative team will need to develop some structure and organization for our online community. I trust that of our 2000 members some social media stars will arise and have just the skills to address those issues as they come up.

I could ask the board, committee chairs and other Wisconsin section leaders to dig in, but I won't. This is an opportunity and a responsibility for every one of us.

As the chairman of the public affairs committee, I think that ASCE Collaborate is our best hope for having a positive impact on public policy in Wisconsin. I greatly appreciate our newsletters, but they are not frequent enough to notify you of urgent public policy issues. Newsletters are not two-way communication, and they are dependent on a few speaking to the many. Do you see the difference, the power of all of us using on-line collaboration?

Wisconsin civil engineers, please join me in putting our skills and abilities to good use. Take your keyboard in hand and have an impact. Get involved. Go to ASCE Collaborate. Get familiar with the resources there. Upload your photo, so we can see you are on-board. (If you are shy, I see some

folks upload their favorite vacation, child or pet photo). We have power in our community. I look forward to our future collaborations!

*The opinions expressed here are those of the author only, and do not necessarily represent the views of the Wisconsin Section or ASCE.*

## **Ken Mika named STEM Forward Young Engineer of the Year**

by: Jared Wendt



The ASCE Southeast Branch is very excited to announce that Ken Mika has been named the 2017 STEM Forward Young Engineer of the Year! Ken was nominated for his high level of commitment to Community, Public Service, and Service to ASCE, making him well deserving of this honor.

Over the course of the past several years, Ken has emerged as an active leader for the Southeast Branch, YMG and the Section and been a strong advocate for our profession and STEM. Among his more recent accomplishments, Ken was successful in bringing the ASCE movie "Dream Big: Engineering Our World" to the Milwaukee Public Museum IMAX theater this past year. He helped to organize a premier for the film at Discovery World for members of the ASCE Southeast Branch and also a Dream Big night at the Milwaukee Public Museum for scout groups and families.

Ken truly exemplifies the spirit of the STEM Forward Young Engineer of the Year award with his willingness and enthusiasm as a volunteer leader. Ken will be presented with the Young Engineer of the Year at the STEM Forward Engineers Week Banquet on February 15 at the Italian Community Center in Milwaukee. For more details, please visit this [link](#).

## **Future Cities - Best Use of Recreational Space**

by: Pat Flaherty

The 2018 WI Regional Future City Competition took place a this past Saturday. This year we had 70+ teams at the competition. The ASCE WI SE YMG special Award for Best Use of Recreational Space goes to Sofia put together by Students from Forest Park Middle School pictured below.



The ASCE Wisconsin Section Southeast Branch also selected four groups for the Exemplary Model Award. The Models and School are listed below:



Amanecer-Longfellow Middle School



Pau Ole - Longfellow Middle School



High Pine Haven - Whitman Middle School



New Madidam - Glen Hills Middle School

Congratulations to all of our award recipients!

### **ASCE Wisconsin Section Spring Technical Conference**

Please join the ASCE WI Southeast Branch as we host the 2018 Spring Technical Conference. The conference will be held at the Country Springs Hotel in Pewaukee on Friday, March 16th, 2018. Conference registration will begin at 7:00 AM, and the conference will begin at 8:00 AM.



## [Conference Overview and Schedule](#)

## [Registration](#)



The Plenary Session will be led by Craig Thompson, Executive Director of the Transportation Development Association of Wisconsin speaking on "The Status of Transportation Funding in Wisconsin." The Keynote speaker for the lunch presentation will be provided by Brett Wallace of the Wisconsin DOT, presenting "Wisconsin DOT's Foxconn Opportunity." A secondary plenary session will be held in the afternoon that will feature an ethics PDH presentation given by John Fraenhoffer, PE, SE, on "The ASCE Canons and Case Histories."

Please see the links below for more information and registration. We look forward to seeing you at the conference! For questions, please contact Kyle Bareither ([kyle.bareither@obg.com](mailto:kyle.bareither@obg.com)) or Tony Castle ([acastle@emcsinc.com](mailto:acastle@emcsinc.com)).

## **Thank a Volunteer Nominations**

The below candidates have been nominated by the ASCE Section or Branch as someone who created meaningful change in the community and is deserving of special recognition at the ASCE Multi-regional Leadership Conferences.

### **Teresa Davis - Northwest Branch**

Teresa served as a Branch Director this past year on the Wisconsin Section Northwest Branch and was also part of the Annual Meeting planning committee. She has held several positions within the branch including president elect, president, past president, newsletter editor, website coordinator, and branch director, making her a wealth of knowledge and great resource for the board.

Teresa was an essential part in making the Wisconsin Section 2017 Annual Meeting a success. She led the charge in soliciting sponsors and exhibitors for the event, securing 20 sponsorships from engineering and construction companies. This provided the attendees a lower conference cost, a valuable networking opportunity, and exposure to the different products and services available to aid in design and construction.

Teresa has also provided great experiences to the Northwest Branch members by setting up tours of local bridges under construction. During the last year she has coordinated construction tours of the I-90 Dresbach Bridge, St. Croix Crossing in Stillwater, and the Prescott Bridge slated for next spring.

For these reasons, the Northwest Branch recognizes and nominates Teresa Davis as an outstanding ASCE volunteer.

### **Kyle Bareither - Southeast Branch**

Kyle Bareither has been an active member of the ASCE Wisconsin Section Southeast Branch for approximately 7 years, participating in both Branch and YMG activities during that time. Kyle has volunteered his time by holding several officer positions with both the Branch and the YMG over those years, as well as serving on several organizational committees for Branch events such as the STEM Expo, Spring Technical Conference, and Dream Big Night at the Museum. Kyle has also been an active participant in the YMG's STEM outreach efforts with local community children's organizations, helping to promote STEM learning amongst the youth in our area.

In addition to volunteering his time with ASCE, Kyle also volunteers his time with the local chapter of the Leukemia & Lymphoma Society, and a local non-profit organization called Imerman Angels. Kyle has been actively involved in the Leukemia & Lymphoma Society's Light the Night Walk, serving first as a participant and then as an organizer. With Imerman Angels, Kyle has volunteered his time to provide one-on-one support to cancer patients undergoing treatment.

Whether it is ASCE or another organization important to Kyle, his generosity with his time is something we all should aspire to duplicate.

### **Larry Ryan - Wisconsin Section**

Larry has been passionately involved with the ASCE Wisconsin Section and SW Branch for over two decades. He served on the Section Board as Director for several years and was Chair of the Awards Committee for 8 years. Also, Larry served as Chair or was part of a Conference Planning Committee for the Section's Annual Meeting or Spring Technical Conference for as long as I've been active in ASCE (including in college).

In addition to his service to ASCE, Larry has been deeply involved with his service to community. Since 1977, Larry has been part of the Madison East Kiwanas Club where he served as President twice, Secretary for three years, and is currently the Treasurer. He also started the Club's Foundation where he currently serves as Treasurer. He routinely volunteers at local nursing homes, assists with lunch programs for homeless people, and has spent many hours volunteering at Camp Wawbeek (Easter Seals summer camp for developmentally disabled children and adults).

Lastly, Larry has served as mentor and ASCE SW Branch Liaison to the UW-Madison Engineers Without Borders student chapter for the last five years. He has mentored students working on projects in Uganda, Kenya, Tanzania, and Barbados.

## **Around the Section**

This section features activities from the various Branches and Younger Member Groups around the Section. If you would like to have your event included, please email details and a description of your event to [wi.sec.asce@gmail.com](mailto:wi.sec.asce@gmail.com).

### **ASCE 2018 Spring Technical Conference**

The Southeast Branch cordially invites you to attend the 2018 ASCE Wisconsin Section [Spring Technical Conference](#) on Friday, March 16 in Pewaukee. Don't miss this opportunity to reconnect with old colleagues, network with other engineers, and earn PDHs!

### **ASCE Brewers Game**

The annual Brewers game and tailgate outing is right around the corner. This year's installment will be held on Friday, May 4th as the Brewers host the Pittsburgh Pirates. Be on the lookout for registration information in the coming weeks!



### **Save the Date: ASCE 2018 Wisconsin Section Annual Meeting**

The ASCE Fox River Valley Branch is hosting the 2018 Wisconsin Section Annual Meeting on Friday, September 21 at the new Fox Cities Expo Center in Appleton.

## **Engineers Without Borders: Answering the Call for Skilled Service**

by: Al Solecki and Kassie Paul, Engineers Without Borders - Marquette University

Globally, many communities are without basic infrastructure - public works that assure the health and safety of the community. Engineers Without Borders works to foster change in communities that lack engineering expertise by collaborating with them to design and build necessary infrastructure. We partner the engineering expertise of our volunteers with the communities we serve. The long term-solutions and relationships born from these partnerships uphold the dignity of all persons and give great authority to those who are not traditionally in power.



As volunteers, we attempt to support our global communities by using our more unique and technical talents as engineers. When we give of ourselves to the good of another by using our areas of expertise, whatever those might be, we call it skilled service.

Even so, everything we do is a learning experience--for our volunteers, mentors, and for the people of the communities we partner with. Preparing for a project is a constant collaboration between students and skilled mentors. Because our work is dependent on understanding the principles of engineering, it is critical that we are ethically conscious of how our work affects the people we work for - and thus skilled service is a vital part of our identity as an organization.

Currently, EWB Marquette is living out this philosophy through two community partnerships. With one, we are designing a pedestrian bridge to provide access during the rainy season. With the other, we are implementing a water distribution system which will provide potable water to roughly 300 homes. EWB takes the project from the beginning - gathering in-country data and defining where the problem lies - and follows it through to the end, where volunteers travel and work with community members to bring our projects to life. We are excited to use our skills as engineers to foster change and empower communities to continue growing long after the project ends.

Look for EWB at the ASCE WI Spring Technical Conference! EWB Student Chapters rely on professional mentors to guide students through technical design decisions in the areas of their expertise. If you are interested in becoming a mentor in Wisconsin or learning more about Professional EWB chapters in the area, please contact WI State Representative Jess Thayer at [jess.thayer07@gmail.com](mailto:jess.thayer07@gmail.com).

Milwaukee Area Professional Chapter: <http://www.ewbwpp.org/>

Madison Area Professional Chapter: <http://www.ewbmapc.com/>

UW Madison Chapter: <http://ewbuwmadison.weebly.com/>

UW Platteville Chapter: <http://uwplattewb.org/>

UW Stout Chapter: <http://studentorgs.uwstout.edu/org/ewb/home>

UW Milwaukee Chapter: <http://ewbatuwm.blogspot.com/>

Milwaukee School of Engineering Chapter: <https://www.ewb-msoe.org/>

Marquette University: <http://ewbmarquette.wixsite.com/ewbmarquette>

## **ASCE Wisconsin Section Administrative Manual Updates**

by: Peter Nilles, ASCE Wisconsin Section Past President

We are in the process of reviewing and updating the ASCE Wisconsin Section Administrative Manual. We have identified some opportunities to revise the Section management for a few reasons, namely:

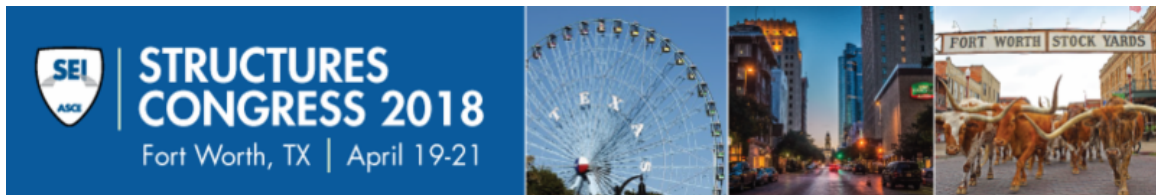
- Our new partnership with impactVS as the Section's association management consultant
- More efficient Section Board management and division of duties

The major change is that we are proposing to eliminate the Vice President position from the Section Board. The duties typically covered by the Vice President will now be covered either by impactVS or by other Section Board members. This change will require a change to our bylaws, by vote of the Wisconsin Section. Please keep your eye out for that ballot later this year.

Other significant changes proposed include elimination of some inactive technical and standing committees, restructuring of the Jury of Judges to incorporate Directors at Large, and general clean up of the timeline of Section Board activities.

While I have taken the lead in my role as Past President on these changes, I could not have done it without the assistance of Ken Mika and Jared Wendt. Thank you, Ken and Jared!

Assuming the Section Board approve the changes to the Administrative Manual (and you as Section members approve the changes to the by-laws), the revised version of the Administrative Manual will be posted as it always is on the Wisconsin Section website. In the meantime, please contact me with questions or concerns at [pmbnilles@gmail.com](mailto:pmbnilles@gmail.com).



**Structures Congress 2018**  
April 19 -21, 2018 in Fort Worth, Texas

Premier Event for Structural Engineers - [Register Today](#)

Reasons to Attend:

- Learn valuable information in the technical sessions  
Earn up to 14 PDH's
- Attend the Evening Reception Celebrating the Future of SE hosted by CSI- make sure you purchase your additional ticket
- Network with 1,200 of your colleagues
- [Students and Young Professionals](#), take this opportunity to meet top-level Structural Engineers and learn how to enhance your career. New Programs offered this year.



**2018 Wisconsin Section  
ASCE Life Members**

To obtain Life Member status, Individuals in the grade of Fellow, Member, Associate Member, or Affiliate must be at least 65 years old, have paid dues in any membership grade except student for at least 35 years and have had ten-years continuous membership immediately preceding the attainment of Life Member. 2018 is the year in which our New Life Members satisfy these criteria.

Gary Amel

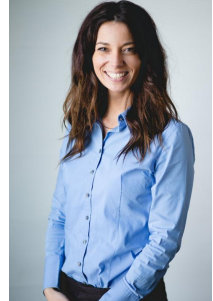
Michael Kelley



John Belken	Curtis Madsen
Richard Bub	William McCutcheon
Gerald Dassler	Robert Montgomery
John Ellingson	Taryn Nall
William Fleming	Mark Oleinik
Robert Grefe	Richard Pierce
Charles Gresser	Gary Raasch
	David Trainor

## Get-to-Know: Your New Administrator

Jill Miller has been with impact Virtual Services since 2016 and has about 13 years experience in Administration Management. She has worked in industries ranging from Broadcast to Oil & Gas. She specializes in serving nonprofit professional associations at both the local and national levels, and has the privilege of working with client organizations in what they often consider their most significant work.



Jill holds a B.A. in Business Administration from North Central College in Naperville, Illinois. Her dedication, attention to detail, and organization combine to make her an efficient nonprofit consultant, allowing her and her clients to thrive within their industries.

In her free time Jill enjoys spending time with her husband while chasing her young son and Great Dane, preferably somewhere outside and within arm's reach of grill and beverage.



## Join the Discussion on Collaborate!

There is a new website for ASCE members to discuss important issues surrounding the profession. Participate in various "communities," such as the Wisconsin Section and your local branch.

You can access [Collaborate](#) by logging in with your current ASCE credentials.  
Check it out and start collaborating!

ASCE WISCONSIN SECTION  
6000 Gisholdt Drive, Suite 200  
Madison, Wisconsin 5371



ASCE Wisconsin Section, 6000 Gisholt Drive, Suite 200, Madison, WI 53713

[SafeUnsubscribe™ {recipient's email}](#)

[Forward this email](#) | [Update Profile](#) | [About our service provider](#)

Sent by [wi.sec.asce@gmail.com](mailto:wi.sec.asce@gmail.com) in collaboration with



Try it free today