

News & Updates May 10, 2021 | Volume 51, Number 3

Upcoming Events

- [ASCE Central PA YMG - Spring Trash Pickup](#)
(5/23/21)
- [Senators Baseball Game](#)
(6/4/21)
- [Annual Knoebels Picnic](#)
(7/24/21)

Link to [Section Event Calendar](#)



[President's Message](#)

ASCE needs volunteers like you!

If you are interested in joining the ASCE board, contact Tim Carre at centralpa.asce@gmail.com.

PA Turnpike Tuscarora Tunnel Rehabilitation Project



Learn more about this interesting rehabilitation [here](#).

ASCE CENTRAL PENNSYLVANIA GEOTECHNICAL CONFERENCE

32nd Annual Conference:

“Case Histories and Emerging Technologies”

September 15 – 17, 2021

Hershey Lodge and Convention Center
West Chocolate Avenue & University Drive,
Hershey, Pennsylvania

1-800-437-7439

Overnight Accommodations:

- Make reservations directly with the Hershey Lodge on their website <https://www.hersheyhodge.com/>.
- Mention you are attending the American Society of Civil Engineers (ASCE) Conference to receive the reduced seminar rate of \$189.
- Cutoff date for special seminar rate is August 15, 2021.
- There are a limited number of rooms available. Please register early.

Preliminary Speakers

Robert Bachus – *Geosyntec Consultants, Inc.*
Dr. Sebastian Bryson – *University of Kentucky*
Allen Cadden – *Schnabel Engineering, Inc.*
Stephanie Chechak – *Gannet Fleming, Inc.*
Gunaratnam Gnana – *D.W. Kozera, Inc.*
Jeff Goodwin – *Foundation Test Group, Inc.*
Dr. Robert Holtz – *University of Washington*
Ed Laczynski – *Wagman Geotechnical Construction, Inc.*
James Long – *DCNR*
Dr. Ray E. Martin – *Schnabel Engineering, Inc.*
Mark McNeilly – *Golder Associates*
Cody Telgheder – *Nicholson Construction Company*
Michael Sydlik – *Earth, Inc.*
Cameron Troxel – *Whitman, Requardt & Associates, LLP*
Dr. John Turner – *Dan Brown and Associates, PC*

Registration

Early Bird: **Displayer:** \$1,225
 Individual: \$525

After 8/16/21: **Displayer:** \$1,525
 Individual: \$675

Government Rate: \$200
Student Rate: \$25

- Displayer Registration includes 2 attendees
- Extra attendees are \$225 each
- A maximum of 4 extra attendees will be allowed.
- Maximum number of attendees per display booth is 6 total.
- Display area includes 8'X10' space suitable for large skyline type display frame or tabletop, with electric, table, and two chairs.

For a program schedule and registration details, please visit our website:

<https://www.central-pa-asce-geotech.org>



Emergency Repairs to Mosul Dam

Deep Foundations
Institute Travelling
Lecturer, M. David Paul
Presents about the
Challenges of Mosul
Dam. Read more [here](#).



2021 Student Awards (Scholarships)

Congratulations to:

Ena Haltigan (York College)
Spencer Smith (York College)
Claudia Tolley (Messiah College) and
Min Liew (PSU-Main Campus)

[Click here for more info](#)

2021 Life Members



Congratulations to:

David Black, P.E., M.ASCE
Jonathan Oravec, P.E., M.ASCE
Patrick Ward, P.E., M.ASCE

Life Members have made a lifetime commitment to ASCE and the civil engineering profession by remaining a member for the full length of their professional career.

Younger Member Group Looking for Volunteers

Click [here](#) for more information.



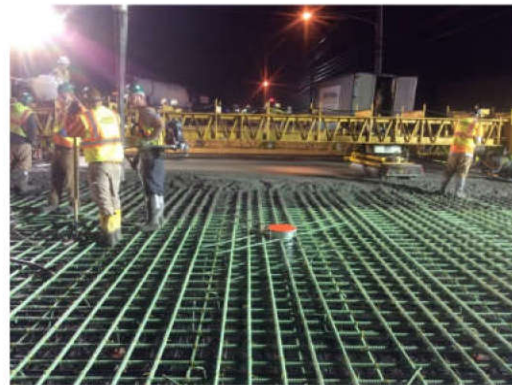
CALL FOR VOLUNTEERS

Email

centralpaymg.asce@gmail.com
for more information!

US 422 Sinkhole Remediation Project in Palmyra, PA

Learn more about this interesting remediation [here](#).



Job Postings

[Click link to see more details at the website](#)

[American Engineer Group \(AEG\)](#)

- Survey Crew Chief
- Project Geotechnical Engineer

C.S. Davidson, Inc

- Civil Engineer - Entry Level Project Designer
- Municipal Client Representative - Professional Engineer
- Municipal Project Manager
- Construction Inspector
- Software Design Engineer
- Water/Wastewater Engineer

ELA Group, Inc

- Traffic/Transportation Project Manager
- Traffic/Transportation Engineer

Gannett Fleming

- Senior Highway Engineer, Transportation
- Geotechnical Project Engineer, Geotechnical
- Water Resources Engineer, Water Resources
- Civil Engineer, Environmental Services
- Entry Level Water Engineer, Water / Wastewater
- Transportation - Project Manager, Transportation
- Water Engineering Intern, Water / Wastewater
- State Traffic Management Center (STMC) Operator, Intelligent Transportation Systems (ITS)
- Highway Project Manager, Transportation
- Civil Engineer, Environmental Services
- Principal Consultant - Business Advisory and Infrastructure Management, Transportation
- Senior Security Consultant, Facilities
- Senior Highway Engineer, Transportation
- Geotechnical Project Engineer, Geotechnical
- Project Manager – Highway, Transportation
- Senior Geotechnical Engineer, Geotechnical
- Electrical Engineer, Transit & Rail
- Traction Power Engineer, Transit & Rail
- Geological Engineer, Geotechnical
- Entry Level Water Engineer, Water / Wastewater
- Civil Engineer - Water/Wastewater, Water / Wastewater

Modjeski and Masters, Inc

- Entry Level and Experienced Bridge Design Engineer
- Entry Level and Experienced Inspectors
- Entry Level Highway Engineer
- CAD Technician

Susquehanna Civil Inc

- Stormwater Engineer
- Right-of-Way Designer

Traffic Planning & Design, Inc. (TPD)

- Transportation Construction Inspector/Manager
- Highway Design Specialist
- Highway or Bridge Design Project Manager
- Municipal Traffic Engineer
- Traffic Engineer

- Traffic Signal/ITS Engineer
- Transportation Engineer
- Structural Designer
- Civil Engineer

Sponsors



American Engineers Group

Geotechnical | Transportation | Structural | Environmental
Water Resources | Surveying | Construction & Testing Services

Certified MBE/DBE/SDB/SBE

Phoenixville, PA | Harrisburg, PA | Philadelphia, PA | Largo, MD

1 (800) 733-1102

www.aegroup-llc.com

A multi-disciplined
A/E/C firm serving
the eastern United
States since 1989



TRAFFIC PLANNING
AND DESIGN, INC.

www.TrafficPD.com



Moving
Forward
Together™



Subscribe to our
training email list at
www.ntmtraining.com
for up-to-date
information!

Transportation Services
Bridge Design & Inspection
Stormwater Design & Permitting
Hydrologic & Hydraulic Modeling
Geographic Information Systems (GIS)
Technical Training & Course Development

NTM is a registered DBE in PA, MD, DE, and WV
and a WOSB with the federal government.

Follow us: ntmeng.com

Dillsburg · Philadelphia · State College

**WHEN
INNOVATION
MATTERS,
WE DELIVER.**



Gannett Fleming

Excellence Delivered *As Promised*

Earth Sciences
Transportation
Water
Power
Geospatial
Facilities
Construction Services

gannettfleming.com



Mechanicsburg, PA | Philadelphia, PA

PROUD SPONSORS OF ASCE



www.modjeski.com

SUSQUEHANNA CIVIL INC. is all about project delivery. We are focused on delivering innovative, cost-effective, and sustainable solutions to our client partners for:

Surveying & HD Laser Scanning	Erosion & Sediment Pollution Control
Geotechnical Engineering	Hazardous Waste Investigations
Hydrology & Hydraulics	Noise and Air Quality Analysis
Highway Engineering	Bridge Design & Inspection
Utility Coordination	Environmental Consulting
Right-of-Way Plans	Mitigation Commitments
Drilling Inspection	ACM & LBP Inspections
Stormwater	Permitting



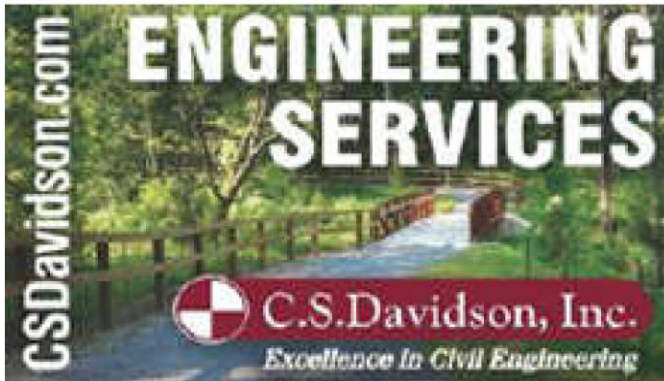
INTEGRITY QUALITY DEDICATION RESPONSIVENESS
SCIVIL.COM | 717.846.7151



elagroup.com

Landscape Architecture
 Land Planning
 Construction Services
 Civil/Municipal Engineering
 Water/Wastewater Engineering
 Transportation Engineering
 Surveying & GIS Services
 Retaining Wall Design
 Athletic Facilities Design & Consulting

LITITZ ♦ STATE COLLEGE ♦ BUTLER



CentralPA ASCE | P.O. Box 337, Camp Hill, PA 17011

Sent by centralpa.asce@gmail.com powered by

