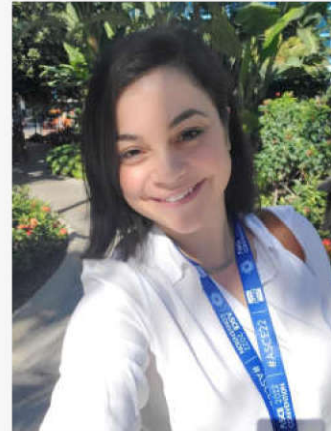


News & Updates November 29, 2022 | Volume 54, Number 1

Upcoming Events

- **[Annual ASCE Hershey Bears Hockey Game](#)**
(12/10/22)

Link to **[Section Event Calendar](#)**



[President's Message](#)

ASCE needs volunteers like you!

If you are interested in joining the ASCE board, contact Loujin Daher at **centralpa.asce@gmail.com**.

What is the Infrastructure Report Card?

2022
**REPORT CARD FOR
PENNSYLVANIA'S
INFRASTRUCTURE**



Have you heard about the ASCE Infrastructure Report Card? Do you know what it is? How it is created? Click [here](#) to see more details at the website.

ASCE Central PA Report Card Released!



ASCE Central PA hosted a Report Card Release Event on 11/15/2022 at the Keystone Building in Harrisburg, PA.

Click [here](#) to see more details at the website.

SEIGSC-PSU Tour-Penn State College of Engineering Research & Teaching Building
Submitted By – Maximilian Ororbia; SEIGSC-PSU President
Click [here](#) to see more details at the website.



US 15/Winding Hill Interchange Cleanup Complete



On November 20, 2022 members and friends of the ASCE Central PA Section completed our bi-annual cleanup of the Winding Hill Road Interchange on US 15 in central PA. This was the fall cleanup and the next event will be in the spring of 2023. Keep a look out for the next announcement and help beautify our roadways.

33rd Annual Conference Innovative Geotechnical Advancement April 5-7, 2023



Join us at the
HERSHEY LODGE

Speakers

Kimberly Martin, P.E., – Keller
Dominic D'Argenzio, P.E. – MRCE
Mina Mikaeel, P.E. – KS Engineers, P.C.
Jesus Gomez, P.E. – GEI Consultants, Inc.
Helen Robinson, P.E. – GEI Consultants, Inc.
Donald Bruce, Ph.D., P.E. – GeoSystems, L.P.
James James, P.E. – USACE, Pittsburgh District
Timothy Stark, Ph.D., P.E., – University of Illinois
James Gardner, P.E. – Golder Associates USA, Inc.
Robert Holtz, Ph.D., P.E., – University of Washington
Rick Deschamps, P.E., D.GE – Nicholson Construction
Benjamin Turner, Ph.D., P.E., – Dan Brown and Associates
Robert Bachus, Ph.D., P.E., D.GE, – Geosyntec Consultants
Greg Rumbaugh, P.E. – Mine Safety & Health Administration
James McKelvey, III, P.E., D.GE, F.ASCE - Earth Engineering Inc.

Early Bird Rates

Individual: \$700
Display: \$1700

After 3/6/2023:

Individual: \$850
Display: \$2000

*Government & Student
Rates Available Online

Lodging
(1-800-437-7439): \$159

Register Now!!
<https://www.central-pa-asce-geotech.org>



**ASCE CENTRAL
PENNSYLVANIA
GEOTECHNICAL
CONFERENCE**

**York College - Capstone Mentors - Opportunity to
Mentor and Work with Senior Students**

The Civil Engineering program at York College is looking for a few civil engineers interested in volunteering to be coaches and mentors for a Capstone Design Team. This is a chance to work with young engineers and future colleagues to help shape their development and share your knowledge and experience. Each year from February until early August (our Spring and Summer terms) our seniors work on a Capstone Design Project. These projects, often community based, are the culminating major engineering design experience that must incorporate appropriate engineering standards and multiple constraints and are based on the knowledge and skills acquired in earlier coursework. We would like to pair an engineer or two with each team to meet with them two to three times during the semester (virtually or in person). The goal is to be a sounding board, ask key questions, offer advice to help coach and mentor them, and help bridge the gap between real-world engineering and class work. Each term the students write a project design report, make a formal presentation--open to the public--and create a poster to "sell the project". In the spring term (February to April) the focus is on defining the problem and developing alternative options for the clients to choose from. During the second term (May-early August) the students focus on the more detailed design of the chosen alternative. Designs are normally conceptual designs to enable clients to use the report to secure funding, get a preliminary idea of the project, or turn it over to an engineer as a starting point prior to getting it reviewed and ready for construction. If you are interested in learning more about this opportunity, have questions, or would like to volunteer please contact Scott Hamilton (shamilton@ycp.edu) or Paul Ackerman (packerman@ycp.edu). Thanks for your consideration of this request.

Job Postings

[Click link to see more details at the website](#)

Sponsors



Ground Improvement Specialists

Pittsburgh Office Miranda Slomkowski Regional Sales Manager 412-620-6174	Philadelphia Office Andy Donaghy Regional Sales Engineer 215-974-2660
--	---

Buildings | Ports & Airports | Rail & Road | Process & Energy

www.menardusa.com



American Engineers Group

Geotechnical | Transportation | Structural | Environmental
Water Resources | Surveying | Construction & Testing Services

Certified MBE/DBE/SDB/SBE

Mechanicsburg, PA | Phoenixville, PA | Philadelphia, PA | Largo, MD

www.aegroup-llc.com     1 (800) 733-1102



GANNETT FLEMING

Creating a Better Future, Together.

Earth Sciences | Water | Transportation | Facilities | Construction Services

gannettfleming.com



Hydrology & Hydraulics
Environmental
Stormwater Management
Bridge Design & Inspection
Transportation Services
Civil/Site Services
Technical Training &
Course Development



www.ntmeng.com



Moving Forward Together®

An ENR 500 Top Design Firm
serving the eastern United States
since 1989



**TRAFFIC PLANNING
AND DESIGN, INC.**
www.TrafficPD.com

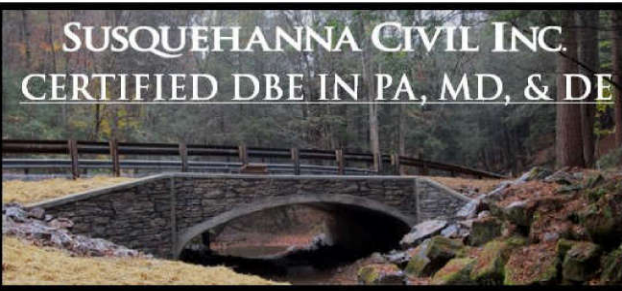
GPI

Many Talents One Firm

Structures | NBIS Bridge Inspection
Survey & Mapping | Design Build
Highway & Roadway | Traffic
Construction & Coatings Inspection

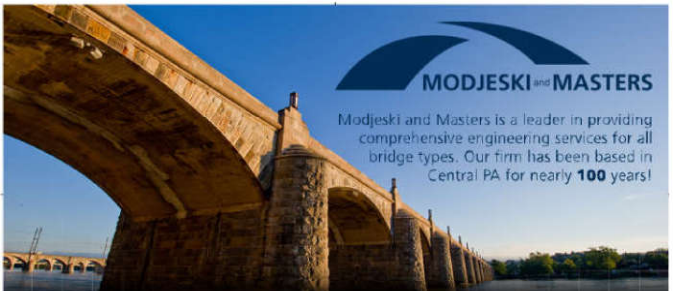
www.gpinet.com

SUSQUEHANNA CIVIL INC.
CERTIFIED DBE IN PA, MD, & DE



HIGHWAY | ENVIRONMENTAL | STRUCTURES
GEOTECHNICAL | SURVEY | WATER RESOURCES

SQCIVIL.COM | 717.846.7151



Modjeski and Masters is a leader in providing
comprehensive engineering services for all
bridge types. Our firm has been based in
Central PA for nearly **100** years!

PROUD SPONSORS OF ASCE CENTRAL PA

www.modjeski.com | (888) 663-5375



TRANSPORTATION • MARINE • FACILITIES • INDUSTRIAL

www.wbcm.com



**Architecture
Engineering &
Consulting**



TRANSPORTATION EXPERTISE

larsondesigngroup.com
570.323.6603





ENVIRONMENTAL SERVICES

CIVIL ENGINEERING SERVICES

CONSTRUCTION SERVICES

LISBURN, PA
 YORK, PA
 STEUBENVILLE, OH
 CHARLESTON, WV
 724.338.4158
 WWW.MARKOSKY.COM

VISIT OUR INDEED PROFILE FOR A
 LIST OF OUR CURRENT CAREER
 OPPORTUNITIES AND TO APPLY,
 TODAY!



CentralPA ASCE | P.O. Box 337, Camp Hill, PA 17011

[Update Profile](#) | [Constant Contact Data Notice](#)

Sent by centralpa.asce@gmail.com powered by

