



American Society of Civil Engineers

Our web site: <http://sections.asce.org/columbia/index.html>

Columbia Section

Since October 10, 1950

Newsletter

April, 2010

Columbia Section Board

Jay Marlow

President

Phone: (509) 942-7540 (B)
jmarlow@ci.richland.wa.us

Paul Smith

Vice President and President Elect

(509) 374-4248 (B)
Psmith@mackaysposito.com

Chris Ells

Secretary/Treasurer

(509) 783-2144 (B)
cells@jub.com

William C. Kinsel

Past-President

Phone: (509) 372-7206 (B)
kinsel@tricity.wsu.edu

Justin Bellamy

Yakima Branch President

(509) 966-7000 (B)
jbellamy@hlacivil.com

Bernard (Ben) W. Volk

Director- Tri-Cities

(509) 783-2144 (B)
bvolk@jub.com

Walla Walla Director - Open

Dave Krumbein

Director-Pendleton/LaGrande

(541) 278-5748
DKRUMBEIN@Bluecc.edu

Yakima Director – Open

Newsletter Editor – Open

Bernard (Ben) W. Volk

Historian

(509) 783-2144 (B)
bvolk@jub.com

Structural Group Chairman-Open

Donald P. Kurkjian

Webmaster

(509) 371-3489 (B)
Dkurkjian@yahoo.com

Columbia Section Meeting

Date: Wednesday, April 21st, 2010

Place: **Shilo Inn, George Washington Way, Richland**

Meal: Buffet (Chef's choice) - \$15 per person
Please pay cash or check to treasurer at meeting

Topic: 3D Laser Scanning; The Next Generation

Speaker: Tom Szymoniak, PE, Project Manager - WHPacific, Inc.

Lunch will start at 11:30, and the presentation will begin at Noon.

RSVP to: Paul Smith, Psmith@mackaysposito.com or 509-374-4248
by April 19th, 2010.

President's Remarks:

Dear Members:

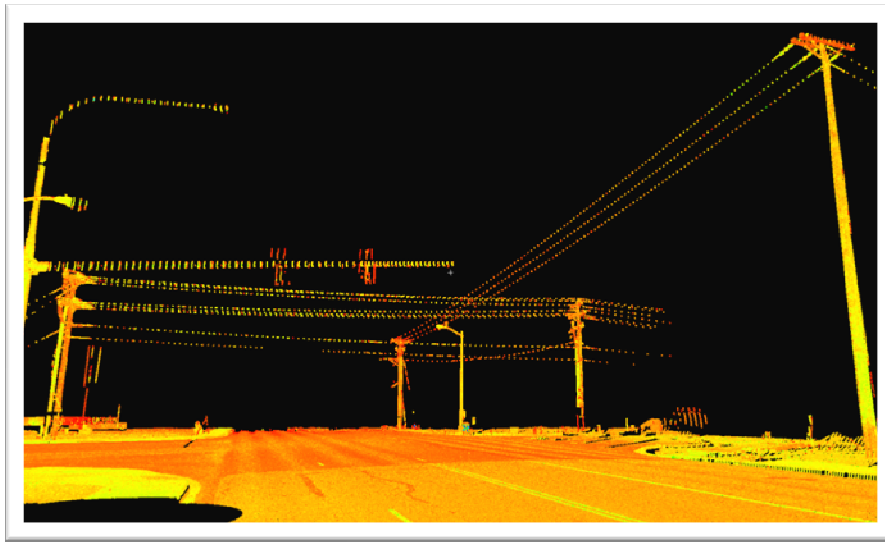
Wow, time is flying and we are into spring already. We only have a few more meetings before we take our summer hiatus. Thank you to everyone who was able to attend last month's meeting to hear Mr. Stacy Frost, the Governor of Region 8, describe the opportunities and benefits of being a member of ASCE.

As I mentioned at last month's meeting we are currently accepting nominations for Secretary/Treasurer of the Columbia Section for 2010/2011. Please contact me if you have a nominee in mind.

I hope you can make the time to attend our meeting this month. I look forward to seeing you.

Sincerely,

Jay Marlow, P.E.
Columbia Section, President



3D LASER SCANNING; THE NEXT GENERATION

ARE YOU READY?

Laser scanning technology is being used on a variety of projects and recent updates are allowing the scanning technology to have a role in the development of engineering plans for roads, bridges, and buildings. The point clouds generated by the LIDAR scanning technology are sufficient for engineering design purposes. Changes in the engineering software are allowing this technology to be imported and used for the design of projects.

Several firms in the Tri-cities are actively using the technology on local projects. The presentation will discuss the scanning technology, applicability on projects, accuracy, and potential uses.

The presentation will be given by Tom Szymoniak, Dan Wobbe, and Brian Coursen from WHPacific. Tom is a project manager with WHPacific and recently opened a local office for the firm in the Tri Cities. Tom is a registered professional civil engineer who brings 28 years of experience in civil engineering on a variety of diverse projects from conceptual planning through construction. Dan is the Director of Survey for WHPacific in the Bend, Oregon office. Dan is a Registered Licensed Land Surveyor in both Oregon and Washington with over 22 years surveying experience. Brian is currently based out of the WHPacific office in Bend, Oregon. Brian's passion is Scanning. He has been performing the field work and data processing for scan projects for the past 5 years, and recently performed the scans of Stevens and George Washington Way in Richland. Brian is used throughout the company for his scanning knowledge, and recently got back from a project in Albuquerque, NM.

