



American Society of Civil Engineers

Our web site: <http://sections.asce.org/columbia/index.html>

Columbia Section

Since October 10, 1950

Newsletter

November 2010

Columbia Section Board

Paul Smith
President
(509) 374-4248 (B)
Psmith@mackaysposito.com

Chris Ells
Vice President and President Elect
(509) 783-2144 (B)
cells@jub.com

Paul Knutzen
Secretary/Treasurer
ptknutzen@meierinc.com

Jay Marlow
Past-President
Phone: (509) 372-7206 (B)
imarlow@ci.richland.wa.us

Justin Bellamy
Yakima Branch President
(509) 966-7000 (B)
jbellamy@hlacivil.com

Bernard (Ben) W. Volk
Director- Tri-Cities
(509) 783-2144 (B)
bvolk@jub.com

Walla Walla Director - Open

Dave Krumbein
Director-Pendleton/LaGrande
(541) 278-5748
DKRUMBEIN@Bluecc.edu

Yakima Director – Open

Newsletter Editor – Tom Szymoniak

Bernard (Ben) W. Volk
Historian
(509) 783-2144 (B)
bvolk@jub.com

Structural Group Chairman-Open

Donald P. Kurkjian
Webmaster
(509) 371-3489 (B)
Dkurkjian@yahoo.com

Columbia Section Meeting

Date: Wednesday, November 17, 2010

Place: **Shilo Inn, George Washington Way, Richland**

Meal: Buffet (Chef's choice) - \$15 per person
Please pay cash or check to treasurer at meeting

Topic: **CRITICAL PATH METHOD**

Speaker: **ASCE – WEBINAR (0.5CEU CREDIT)**

Lunch will start at 11:30, and the presentation will begin at Noon.

RSVP to: Chris Ells cells@jub.com (509)783-2144

President's Remarks:

Dear Members,

It is time for the November ASCE meeting, the final section meeting of the calendar year. We will not be meeting in December due to the number of people traveling for the Holidays.

As officers we have been talking for years about sponsoring a webinar or continuing education course for the Columbia Section. We have finally decided on hosting a series of four presentations over the next year. The series is on Project Management with presentations on Critical Path Method, Monitoring Project Budgets and Schedules, Scope Creep, and Project Work Plans. We purchased these presentations on CD so we will be able to show them at times and locations of our choosing. This month the presentation will replace the traditional meeting but in the future we anticipate these presentations being a supplement to the usual monthly meetings. We will also likely show them at venues other than Shilo Inn, including at municipalities or companies that would be willing and able to host. If you are interested in having your organization host one of the presentations please contact one of the ASCE officers.

This month we will watch the **Critical Path Method** presentation at the Shilo Inn, at 11:30-1:00 on November 17th. We are planning on having lunch with the usual \$15 charge. There will not be any additional charge for the presentation.

This presentation will qualify as 0.5 Continuing Education Units, although you will be responsible for determining exactly how each state counts credits. Still if you are licensed in Idaho or Oregon and are looking for CEUs this is an opportunity to gain some. I hope to see you all and I don't see you there I want to wish you a safe and Happy Holidays.

Paul Smith
ASCE Columbia Section President



COMING FEB 2011 - Inspector's Training Workshop



Description

Learn new tips and techniques to complete your job correctly, safely, on time and on budget. Participants will receive a new workbook – great for reference once on the field.

By attending this workshop you will be better able to:

- Analyze how agencies and contractors see the inspector's role
- Identify how project management tools are used to prioritize, sequence and schedule tasks
- List various methods to communicate with residents, businesses, the public and media
- Describe the general requirements for environmental management on a public works project site
- Develop a project schedule using Critical Path Management

Course Modules

- Basic Overview
- Communication and Documentation
- Risk Management and Legal Issues
- Pre-project Planning
- Regulatory Overview
- Earthwork Part 1 - Land Use Issues
- Earthwork Part 2 - General Construction Practices and Procedures
- Earthwork Part 3 - Soil Characteristics, Testing and Evaluation
- Evacuation and Confined Space Safety
- Underground Pipeline: Pressurized Pipe
- Underground Pipeline: Gravity Line
- Underground Pipeline: Installations
- General Concrete Inspection
- Street Surface Improvements: HMAC
- Street Surface Improvements: PCCP
- Street Lighting and Traffic Signals
- Structural steel inspection
- Landscape and Irrigation - Part 1
- Landscape and Irrigation - Part 2
- Directional Drilling
- LEED & Sustainability
- Scheduling
- Close-out Procedures

Date

2 Day Workshop
Feb 28 & Mar 1, 2011

Cost

\$400
Course qualifies for 1.8
CEU's

Location

Kittitas Valley Event Center
Heritage Center
Ellensburg, WA

**Reply with a YES and #
interested in attending to
to Sam Yaghmaie at
syaghmaie@harris-assoc.com**

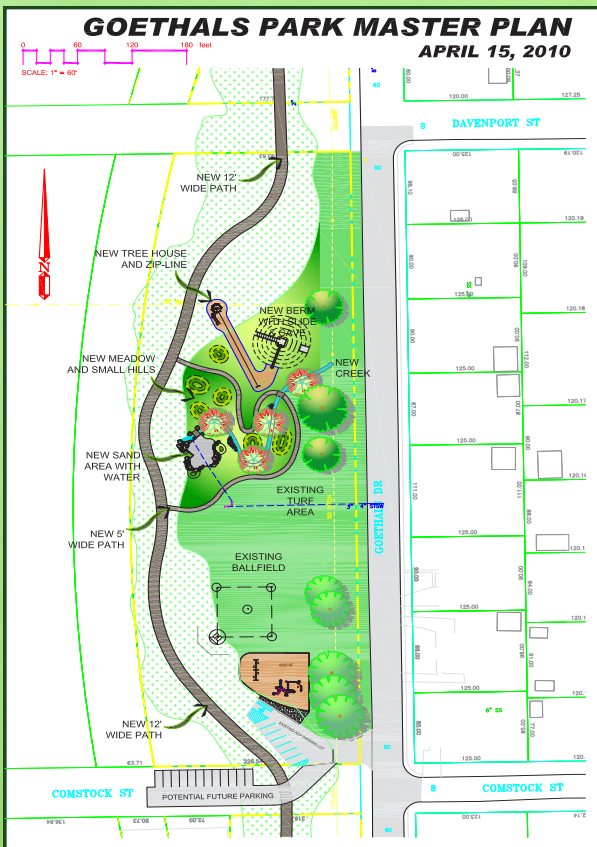
Congratulations to McKay Sposito for a successful event on "Make a Difference Day". They had over 400 volunteers turn out to support the improvements to the Park. See the attached flyer.



Make A Difference Day 2010

MAKE A
DIFFERENCE DAY
NATIONAL DAY OF DOING GOOD

Make a Difference Day is a national day of volunteering. Every year, on the fourth saturday in October, millions of people are encouraged to get out and volunteer and make a difference in their communities. This year the Mid-Columbia Make a Difference Day Committee partnered with the City of Richland to transform Goethals Park into a nature playground.



Goethals Park Master Plan



Goethals Park - Before



The City of Richland started with an \$80,000 Block Grant and with the help of the Committee and over 30 sponsors, the final project existing cost was approximately \$140,000. On October 23rd, 2010, over 400 volunteers came out to help complete the transformation. The City of Richland's crew had spent two weeks prior, prepping the site for two tunnels, a creek, a gravel trail, a sandplay area, a tree stump/log play area, three bridges, a tree fort and over 1,000 native plants. Activities for the kids included building and painting over 30 bird houses, bat houses and squirrel feeders that will be placed throughout the park. The Make a Difference Day Committee and the City of Richland are looking forward to an open house at the park in the spring! This will be a hands-on nature experience for kids and families, encouraging them to go off the trail and explore nature.



Volunteers Laying Rock Along the Creek

Join us on
facebook



Sand Play Area



Prepping Tunnel for soft fall and Retaining Wall

www.midcolumbiamadd.com

Mid-Columbia Make a Difference Day
Committee and Community Partners:



Mackay & Spósito, Inc.



better water. pure and simple.®



Newland COMMUNITIES



Richland