

Connecticut Society of Civil Engineers May Newsletter

From **the President**

Dear CSCE Members,

I hope this newsletter finds you well, and you are starting to enjoy the nice summer weather!

CSCE had a virtual lunchtime meeting on May 10 sponsored by our Transportation and Development Institute, where Kevin O'Connor and Josh Manns from Parsons gave a presentation about Implementing Digital Twins for Design Review. It was great to see an innovative design approach that can continue to be used on future projects!

CSCE also hosted our 15th Annual ACE Awards at the Aquaturf on May 26 and I have to say, the energy in the room was unmatched! It was great to have everyone together again for this event in person, and it was wonderful to recognize the past three years of people, companies and projects that received awards. We hope all who attended enjoyed the night, and we are hopeful that the future will bring many more events like this.

This will be my last opportunity to write a President's Message, so I wanted to say what an honor it has been to be the President of CSCE and serve all our members. We have accomplished a lot over the past year, and I have appreciated all the support from membership, my colleagues and my fellow board members throughout my term. As I said at the ACE Awards, being only the second female President in our organization's history, I hope that I was able to set an example for women in the industry to step into leadership positions like this. CSCE has allowed me to develop my leadership skills and grow professionally early in my career, and for that I am very grateful.

Thank you all and have a great summer!

Sincerely,

Brianna Ritacco, P.E., M. ASCE

Upcoming Events

2022

June 10-12 East Region Young Member Council Conference

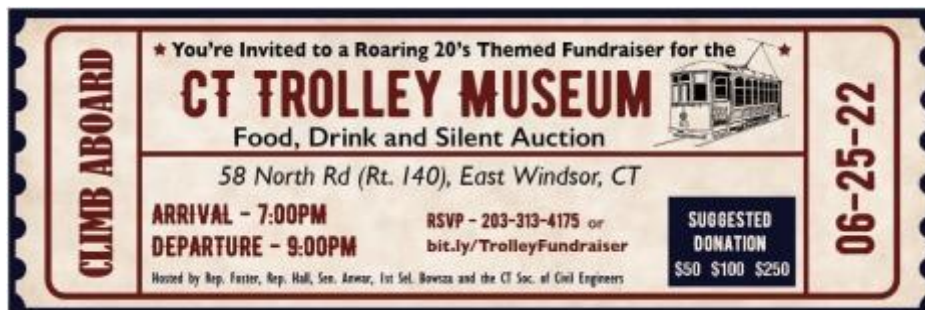
- Hosted By CSCE's Younger Members Group this year in Hartford (See information below)

June 16 - Structural Engineering Seminar Construction Challenges and Failures

- Earn up to 6 NYS PDHs at this event
- Location: MDC Operations Facility & Training Center, Hartford, CT
- [Click here to register for this event.](#)

June 25 - CT Trolley Museum Fund Raiser

- Location: CT Trolley Museum 58 North Rd East Windsor, CT
- Join CT Soc. of Civil Engineers, Rep. Foster, Rep Hall, Sen. Anwar & 1 Sel. Bowsza for a roaring 20'S themed Fundraiser for the CT trolley Museum.



Hartford Eastern Regional Younger Member Council (ERYMC) Conference

Hartford 2022 Update

Conference Details

Dates: June 10-12
Location: Hartford Marriott
Host: Connecticut Society of Civil Engineers (CSCE)

ERYMC includes ASCE Regions 1, 2, 4, & 5

The American Society of Civil Engineers (ASCE)'s Eastern Regional Younger Member Council (ERYMC) will span 24 states, 5 Canadian Provinces and Puerto Rico.

Conference will include workshops, technical sessions, tours, networking opportunities, and more including:

- ASCE Committee on Younger Member (CYM)'s Younger Member Leadership Symposium (YMLS)
- Region 1 Assembly, Section and Branch Leaders from 8 Northeast States and Canadian Provinces
- Friday Evening Social - City Steam Brewery
Platinum Sponsor: WSP
- Saturday Evening Social - Thomas Hooker Live
Platinum Sponsor: BL Companies

Outdoor spaces when possible & COVID-19 Guidance as followed by City of Hartford and ASCE.

For registration and updates please visit our website: www.cterymc.com





Volunteers Needed

Conference Staffing
Registration Table
Event Set Up
Event Clean Up

Please contact us for any questions or clarifications. Please let us know if you need no later than May 31st

If you are looking to volunteer or have any questions please email our group: cterymc@gmail.com

Sponsor Benefits Reminders

Platinum Level
Evening Sponsored Event
Company Logo on Attendee Gift Bag
All Gold Level Benefits

Gold Level
Logo on Conference Lanyards
Advertisement in CSCE Newsletter
Sponsor Signage at Networking Event
All Silver Level Benefits

Silver Level
Company Promo Item for Gift Bag
Free Job Posting in CSCE Newsletter
Social Media/Website Thank You Post
All Bronze Level Benefits

Bronze Level
Sponsor Signage at Conference

Thank You to our Sponsors!

Platinum Level
 

Gold Level
 

Silver Level
  

Bronze Level
  



JOIN US AFTER HOURS

ERYMC 2022 SOCIAL

THOMAS HOOKER LIVE
100 HUYSHOPE AVE
HARTFORD, CT

**JOIN US ON SATURDAY NIGHT,
FROM 6 P.M. TO 10 P.M.!**

We are turning back the clock and celebrating Connecticut and its founder Thomas Hooker. Join us for good food and drinks at Thomas Hooker Brewery!

Register at CTERYMC.COM

PLATINUM SPONSOR

 **BL Companies**
Architectural
Engineering
Environmental
Land Surveying

JOIN US AFTER HOURS!



 **ERYMC 2022** 

SOCIAL

CITY STEAM

942 MAIN ST
HARTFORD, CT

**JOIN US ON FRIDAY NIGHT,
FROM 6 P.M. TO 10 P.M.!**

We're serving up only the best food and drinks
to give you an early and fun start to the
weekend. Ticket includes 2 drinks, trivia and
bar games. Register at CTERYMC.COM

PLATINUM SPONSOR





BL Companies is a team-oriented, 100% employee-owned company that continually strives for excellence in providing integrated professional services. All of our employee owners have a definite stake in what we do and how we do it, and each member of our staff benefits directly—financially and professionally—from their own hard work.

We are a multi-disciplined, ENR Top 500 consulting firm, with immediate career opportunities available for dynamic, qualified professionals in all disciplines and locations.

BL offers a comprehensive, highly-competitive employee benefit package, which further demonstrates our commitment to our staff.

For more information visit www.blcompanies.com

Employee owned. Client driven.





Innovative Engineering Consulting and Construction Management

2022 marks seven decades of award-winning projects,
satisfied clients, safer communities and a reputation
for excellence.

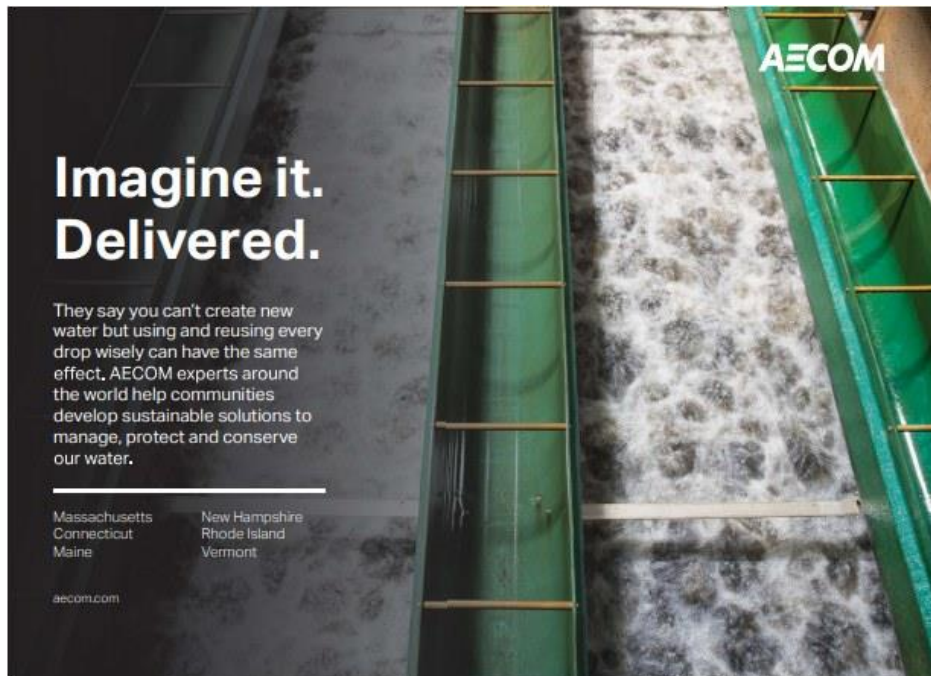


Responsibly
Improving the
World We Live In

chacompanies.com

#theCHAWay





2022 ACE Award Winners

CSCE is very happy to announce that the following projects and Individual's were selected for ACE Awards in 2022.



1 -

- **President's Award - Katie Hedberg-Klose, RSP1, CTDOT**

Presidents Awards are awarded to individuals selected by the outgoing president who have contributed to the advancement of the Section through their efforts over the preceding year.

Katie Hedberg-Klose has over six years of experience in the civil/transportation industry and currently works for CTDOT in the Sustainability & Resiliency Unit. She is an active CSCE member, where she is the current Younger Members Group President, and one of the chairs for planning ERYMC, which is a conference spanning the entire east coast. Katie has been a key player for other CSCE initiatives this year, such as helping to plan the first CSCE/WTS joint event and coordinating with CTDOT leadership to start a DOT Partner Program for promoting membership to its employees. She has also been active at the ASCE national level with the Committee on Younger Members, where she assists with programming, awards and annual reports for groups across the country. In October, she will become the Eastern Geographic Member and oversee the 51 younger member groups in the eastern region.



2 - Young Civil Engineer of the Year - Alex Klose, P.E., Town of East Lyme

Nominees must be an ASCE member, a Professional Engineer, and 35 years of age or younger

Alex Klose has over six years of experience in the civil engineering and construction industry and currently serves the Town of East Lyme as their Town Engineer. He has taken on an additional role as the FEMA Community Rating System Coordinator, focusing efforts in repairing infrastructure damaged by Hurricane Ida.

In addition to serving the East Lyme community, Alex also serves his country. He has served as an Engineering Construction Platoon Leader and an Engineer Officer for the 26th Mobility Enhancement Brigade which serves as the headquarters element for the FEMA Homeland Response Force for Region 1, New England.

After obtaining his PE in 2021, he began teaching as an Adjunct Professor at Three Rivers Community College. He is currently teaching Introduction to Engineering and plans to teach Civil/Environmental Engineering courses in the future.

Alex is also currently pursuing a Master of Science in Engineering Management concentrating in Engineering Services and Infrastructure Management at UMASS Lowell and is expected to graduate in August 2022.



3 - Benjamin Wright Award - Mark Rolfe, P.E., Deputy Commissioner of CT DOT

ASCE honors Benjamin Wright, who was named by ASCE as the Father of Civil Engineering, by presenting an award in his name each year to an individual that has had outstanding contributions to the civil engineering industry.

Mark Rolfe is a legend and a keystone to the transportation engineering community in Connecticut. He has worked for the Connecticut Department of Transportation for over 35 years and in 2019, was appointed Deputy Commissioner. In 2015, Mark became the Construction Administrator responsible for administering all CTDOT construction projects and in 2017, was named Chief Engineer and Bureau Chief for the Bureau of Engineering and Construction. His experience played a critical role in many CTDOT programs, including the Q Bridge program; a 2-billion-dollar contract which included the Pearl Harbor Memorial Bridge, the nation's first extradosed cable-stayed bridge, and the CTFastrak project. Mark has come a long way since he served as ASCE Student Chapter president in college, and recently became an ASCE Fellow, an honor only 3% of ASCE members hold for their contributions to the civil engineering industry.



4 - ACE Award - Sustainable Historic Preservation

Hotel Marcel in New Haven, CT ~ GNCB Consulting Engineers

Hotel Marcel located at 500 Sargent Dr. in New Haven, CT is a 165-room boutique hotel that includes a restaurant, gallery and meeting space. This project was a certified historic rehabilitation and adaptive re-use of mid-century modern design originally

designed by Marcel Breuer in 1967. This building originally housed the Armstrong Rubber Co. Building and then the Pirelli building. This project is LEED Platinum certified. This is the first Passive House certified Hotel in the U.S.



5 - ACE Award - Coastal Structural Engineering

700-Ton Marine Travelift Infrastructure ~ RACE Coastal Engineering

Bridgeport Boatworks had previously operated a 75-ton travel lift and a 200-ton travel lift for recreational and commercial vessels. In order to haul larger vessels, including barges, ferry boats, tugboats and megayachts, it was decided that a 700-ton travel lift was needed, and 2 new travel lift piers needed to extend toward Bridgeport Harbor's Federal Channel. RACE Coastal Engineering provided engineering and construction administration services for the travel lift infrastructure and is proud to provide ongoing waterfront engineering support as Bridgeport Harbor is transformed into an active and vibrant center of marine activities.



6 - ACE Award - Transportation and Development

Franklin Square Roundabout in Norwich, CT ~ VHB

The VHB Project Team delivered an innovative solution for a modern roundabout project at the intersection of Franklin Street and Main Street, also known as Franklin Square, in downtown Norwich, Connecticut. The project-maintained business access and intersection operations during construction, added several spaces of parking to the downtown business district, improved traffic flow, and enhanced pedestrian safety.



CSCE Officer Transitions

CSCE will be having our officer transitions this summer. The new board will be as follows:

- President, Scott Nolan, SLR
- President Elect, Aaron Foster, CHA
- Vice President, Rich Cohen, Lochner
- Treasurer, Tyler Parker, Lochner
- Director I, Past President, Brianna Ritacco, CTDOT
- Director II, Past President, George Gerard, WSP

We are still taking nominations for our two vacant board positions, which are the Secretary and Newsletter Editor. If you have any interest in getting involved, please reach out to csceinfo@gmail.com.

Brain Teaser Corner



Four cars come to a four way stop, all coming from a different direction. They can't decide who got there first, so they all go forward at the same time. They do not crash into each other, but all four cars go. How is this possible?

Previous Month's Answer: Chicago

Solution to be shown in subsequent newsletter. Want to stump your colleagues? If the answer to this question is Yes, please submit your Brain Teaser (and solution) to the Newsletter editor at tparker@hwlochner.com

Employment Opportunities

Job Openings

Stantec - [Structural / Civil Engineering Intern](#), New Haven, CT - Posted on www.csce.org on March 14, 2022

Jobit - [Civil Engineering Project Manager](#), Hartford, CT - Unlock your full potential with an award winning full-service civil engineering firm! Job posted on www.csce.org on March 10, 2022

Liberty Personnel Services, Inc. - [Civil Transportation Inspector](#), North Haven, CT - Job posted on www.csce.org on March 10, 2022

Haley & Aldrich - [Civil/Geotechnical Engineer](#), Hartford, CT - Job posted on www.csce.org on March 10, 2022

Jacobs - [Senior Wetland Scientist/Permitting Specialist](#), Wethersfield, CT - Job posted on www.csce.org on March 10, 2022

Kleinschmidt Group - [Senior Structural Engineer](#), Essex, CT - Job posted on www.csce.org on March 10, 2022



- **Siefert Associates, LLC**
- **Geotechnical Project Manager**
- **Job Posted: May 30, 2022**

Location: Watertown, CT or White Plains, NY (with some part time work from home flexibility)

Company Description: Siefert Associates, LLC is a Structural -Geotechnical Engineering Firm defined by our core values of honesty, integrity, and work life balance. We practice in the niche field of Construction Engineering. Our Specialty is developing working drawings and calculations tailored to the preferred means and methods of contractors on heavy highways, buildings, railroads, power generations, utility and marine projects. Our scope of services has grown to include permanent design, inspection, and field services.

We have offices in Watertown, CT and White Plains, NY

Job Description: Siefert Associates, LLC is seeking a Geotechnical Project Manager. This position works under the supervision of the Geotechnical Department Manager and will have responsibilities in business development, proposal writing (scope and fee estimate) and delivery of projects. On Projects the Geotech PM will be responsible for managing the project budget, change management, client communication, on the job training of junior engineers, providing direction/oversight/QC of junior engineers' design work as well as preparation of calculations and drawings for complex projects. Site work for the purposes of inspection of existing or asbuilt conditions, monitoring of subsurface explorations, and other relevant soil testing is required but is typically less than 10% of your time.

Project types include support of excavation (sheet piling, soldier piling, soil anchors, etc.); cofferdams; slope stability; retaining walls (GRES, concrete, masonry); pavement structures; pile foundations and shallow foundations; geotechnical investigations (bridges, buildings, embankments); waterfront structures; support and protection of utility structures; and geotechnical instrumentation and monitoring services.

Minimum Requirements:

- Master's Degree in Geotechnical Engineering
- PE License (and willingness to obtain in other states through reciprocity as project needs arise)
- Experience (10+ years)

Additional Qualifications: The ideal candidate will have the ability to work collaboratively, in a team setting, with both coworkers and clients, from diverse engineering and construction backgrounds.

Contact Info: Visit our website: www.siefertassociates.com – please email cover letter and resume to info@siefertassociates.com



- **GeoDesign**
- **Entry Level & Project Geotech Engineers**
- **Job Posted: April 4, 2022**

GEODesign has immediate openings in Connecticut for an entry level and a project-level geotechnical engineers to provide geotechnical services on design and construction projects in New England and Metro New York areas.

GEODesign is a premier geotechnical specialty engineering consulting firm headquartered in Middlebury, Connecticut, with offices in NJ, VT, NY and OR. We are a regional industry leader providing services in the fields of geotechnical, environmental, forensic, and construction engineering. This position offers an excellent opportunity to work on a wide variety of projects such as highways & bridges, buildings, water front structures, land development, forensic engineering, dam engineering, and environmental remediation. GEODesign offers great growth potential and learning opportunities to those aspiring professionals by working closely with our highly competent, seasoned engineers recognized in the field. For more information/to apply, please visit [it https://geocompanies.com/](https://geocompanies.com/) or email resume to mdu@geocompanies.com.



- **Siefert Associates, LLC**
- **Structural Project Manager**
- **Job Posted: May 13, 2022**

Siefert Associates, LLC., is a Structural-Geotechnical Engineering firm practicing in the niche field of Construction Engineering. We are the professional service firm of choice for contractors across the Northeast and are proud to call 10 of the top 15 Domestic Heavy Contractors [per ENR] as our Clients. Our specialty is developing working drawings and calculations for heavy highway, building, railroad, & utility projects. Our work includes temporary & permanent design, inspection, & field services.

We seek a Structural Project Manager for responsibilities that include the management & preparation of calculations for complex projects, business development, proposal writing, & training/mentoring of production staff. BS or MS in Civil Engineering, PE license in NY/CT, & 10 years of design experience in construction engineering preferred. Located in Watertown, CT office with hybrid work options.

Apply at: www.siefertassociates.com –email cover letter & resume to info@siefertassociates.com



- **Connecticut Department of Transportation**
- **Transportation Engineer Trainees**
- **Job Posted: May 17, 2022**

Transportation Engineer Trainees work in many different capacities agency-wide. These positions are available throughout the State with unbeatable benefits as well as a promotional opportunity after one year. These positions are full-time, 40 hours per week. New hires to state service currently start at \$65,796 annually. Current students who will be graduating with a Bachelor's degree in Engineering or Construction Management by the end of December 2022 are strongly encouraged to apply!



- **CCA**
- **ASSISTANT CIVIL ENGINEER**
- **Job Posted: May 3, 2022**

ASSISTANT CIVIL ENGINEER – CCA is a civil, environmental, landscape architecture & surveying firm in the Brookfield, CT area serving its clients for over 40 years. We are seeking a graduate civil engineer with a BS in civil engineering, Engineer in Training (EIT) certified and 2 years of experience to assist in preparing plans and calculations for a variety of civil engineering projects. Applicant should be proficient in use of AutoCad Civil 3D 2019 or later. Benefit package includes 3 weeks' vacation time, holidays, sick time, health benefits and 401k plan. Salary is negotiable. Send resume to employment@ccaengineering.com. EOE.



- **DiBlasi Associates, P.C.**
- **Structural Engineer & Revit Technician**
- **Job Posted: April 8, 2022**

DiBlasi Associates, P.C., a well-respected structural engineering firm in Monroe, CT, has immediate opening for structural engineers and a Revit technician. Firm specializes in the design and investigation of complex building structures. Project types include educational facilities, office buildings, institutional facilities and residential facilities. Firm maintains a strong commitment to continuing education and is active in many professional organizations.

Senior Structural Engineer: Applicant should have 7-15 years experience in building design using steel, concrete, and timber structural systems, and shall have Revit experience. Must be capable of managing multiple projects and overseeing the production of construction documents. Connecticut PE license or ability to obtain a CT PE required. Good communications skills and ability to work with a variety of clients is a must.

Structural Engineer: Applicant should have minimum two years experience in building design using steel, concrete, and timber structural systems. Revit proficiency required. Experience with RAM Structural System a plus. BSCE and EIT required.

Revit Technician: Applicant shall have a minimum of two years experience using Revit for the design of structural building systems.

Competitive salary and benefits package. Email cover letter and resume to personnel@DiBlasi-Engrs.com. EOE.



- **GZA GeoEnvironmental, Inc**
- **Entry-Level Geotechnical Engineer**
- **Job Posted: April 26, 2022**

GZA GeoEnvironmental, Inc. (GZA) is seeking an **Entry-Level Geotechnical Engineer** in our **Trumbull/Glastonbury, CT office**. The successful candidate must have a solid educational background and be self-

motivated with a professional attitude. Join our team of engineers who work on a variety of projects including geotechnical explorations, foundations, ground improvement, and field monitoring. Work under the supervision of project managers and/or principals. Between field work projects, you will work in a professional office setting, preparing detailed and accurate field documentation, data analysis and reporting. Great culture, benefits and opportunity for growth! **To apply, please go to www.gza.com/careers**



- **Nathan L. Jacobson & Associates**
- **Chief Inspector**
- **Job Posted: November 23, 2021**

Established Civil and Environmental Engineering firm seeking highly motivated technical personnel with excellent communication skills for a Construction Chief Inspector position. Experience in bridge and roadway construction inspection, testing and CTDOT four volumes. Minimum AS degree in CE or CE Technology desired, and; Microsoft Word, Excel and Outlook experience required. NICET 3 certification or PE required. For more information and to apply, visit our website; www.nlja.com.



- **Luchs Consulting Engineers, LLC**
- **Chief Inspector, Office Engineer, Senior Inspector, and Inspector positions**
- **Job Posted: October 18, 2021**

Luchs Consulting Engineers, LLC, a Meriden based Consulting Engineering firm is seeking candidates for a Chief Inspector, Office Engineer, Senior Inspector and Inspector positions. Experience with State of Connecticut and Municipal Construction Inspection procedures is required. Current NICET, NETTCP, ACI, ATSSA and NACE Certifications are a plus.

Competitive Benefit Package

Email: dcrandall@luchs.com

An Affirmative Action Employer (EOE)

<http://www.luchs.com/>



- **Luchs Consulting Engineers, LLC**
- **Civil Design Engineer**
- **Job Posted: October 18, 2021**

Luchs Consulting Engineers is a multi-disciplined engineering, surveying firm based in Meriden, CT. We have immediate opportunities for professionals who are ready to join our dynamic team.

Civil Design Engineer BS Degree in Civil Engineering; EIT or NICET a plus

- 3-7 years' experience in CTDOT design environment
- Roadway Drainage Design/HEC-RAS Hydraulic experience required
- Knowledge of MicroStation or AutoCAD required

Comprehensive Benefit Package

Please email resumes to: dcrandall@luchs.com

<http://www.luchs.com/>



Consulting Engineers, P.C.

Structural Engineering
Geotechnical Engineering
Historic Preservation

- **GNCB**
- **Sr. Geotech Engineer**
- **Job Posted: July 22, 2021**

GNCB seeks Sr. Geotech Engineer to serve as Project Manager. Responsibilities: Manage projects including all aspects of field & lab investigations, project design, & construction administration; prepare budgets, proposals, reports & contracts; build and maintain Client Relationships. Minimum Quals: B.S. or M.S. in Civil Engineering with geotech concentration; P.E. in Connecticut; 8 to 12 years' experience showing proficiency in job responsibilities & knowledge of local subsurface conditions.

<http://www.gncbengineers.com/>



- **Hardesty & Hanover**
- **Civil Engineers**
- **Job Posted: June 22, 2021**

Hardesty & Hanover is currently seeking engineers to join our expanding civil engineering design group in New England. Our New Haven office seeks experienced Civil Engineers with expertise in roadway, drainage, traffic, and highway safety design. Applicants should be able to perform design tasks, lead small groups, communicate effectively, and collaborate to meet objectives. Our firm offers a close-knit employee-based culture and opportunities for professional growth and leadership. Please visit <https://www.hardestyhanover.com/current-openings/> for further details.



- **Conlon Engineering, LLC**
- **Structural Engineer**
- **Job Posted: June 21, 2021**

Conlon Engineering, a growing structural design firm in Brookfield, CT is seeking a structural engineer with 0-3 years of experience doing design work and calculations. We are looking for a smart, hardworking engineer who wants to be part of a profitable firm that is set up for sustainable growth. Visit our website at conlonengineering.com and email resumes to office@conlonengineering.com



- **Down To Earth Consulting, LLC**
- **Geotechnical Senior Project Engineer**
- **Job Posted: June 21, 2021**

Down To Earth Consulting is seeking a Senior Project Engineer to join our geotechnical group in Naugatuck, CT. The successful candidate should have a BS degree from an ABET accredited civil engineering program, 5 to 10 years of experience, and be a licensed PE. Down To Earth Consulting is an Affirmative Action/Equal Opportunity Employer. To learn more about this opportunity, please submit your resume to ray@downtoearthconsulting.com.

<https://downtoearthconsulting.com/>



7 - <https://www.facebook.com/PereiraEng/>

- **Pereira Engineering**
- **Civil Engineer, Land Surveyors & Survey Technicians**
- **Job Posted: June 21, 2021**

Pereira Engineering is an established Civil/Environmental/Land Surveying firm located in Shelton, CT. PE is seeking a Civil Engineer as well as Land Surveyors and Survey Technicians (at all levels of experience) to expand our Survey Department. PE offers a very competitive salary and benefits. Please email resume to: joe.pereira@pereiraeng.com

Memberships

ASCE and CSCE Membership

ASCE members come from all disciplines of civil engineering, from all types of environments, and from all over the world. With benefits geared to meet the high standards of professionalism, ASCE strives to cater to each member's needs.

Membership in CSCE is granted to ASCE members upon receipt of Connecticut Section dues. Connecticut Section dues are \$30 per year. Please include your section dues with your national membership renewal. We can accept mid-year memberships. Please contact our [Membership Committee Chair Rich Cohen at rcohen@hwlochner.com](mailto:rcohen@hwlochner.com) for more information about CSCE and ASCE. To join the Connecticut section of ASCE, please go to the ASCE website (www.asce.org) and click on Join at the top of the page.

Why join CSCE? Please click [here](#) for our PowerPoint Presentation from a Professional Issues Seminar on Tuesday, April 8, 2008 about the Advantages to Joining Professional Associations

Transferring Section Membership

Have you recently moved to Connecticut, or are you about to? If you are a current ASCE and local Section member you can transfer your Section membership to CSCE. Once you move to Connecticut, you may go online to www.asce.org/myprofile and log in change your address information. This will initiate the transfer from your old Section to the Connecticut Section. If you encounter any trouble while online, you can also contact the ASCE Records Department via email at memrec@asce.org or (703) 295-6300 to provide you new address information and the transfer can be handled that way as well.

If you are moving out of Connecticut, you can follow the same procedure to transfer from CSCE to your new local Section. We are sorry to see you go, but hope that you continue to be active in ASCE and your new local Section. For information about the local Section for where you are moving, you can visit the ASCE website @: <http://www.asce.org/Regions-Sections-Branches/>

Advancing your Membership Grade

Do you need to advance your membership grade? Are you a recent graduate? Did you get your P.E. license? ASCE and CSCE encourage you to advance your membership grade as your professional career progresses. Information and instructions are available on the [ASCE website](#)

10 Free PDHs

Did you know ASCE members receive 10 Free PDHs.

Choose up to 10 out of 200 on-demand webinars from the comprehensive continuing education library

All active professional ASCE members have access to the courses. If you have already selected your free courses, go directly to [MyLearning](#). Check out other [continuing education](#) opportunities too.

*ASCE updates free On-Demand Webinars on January 1. Free webinars must be used (viewed and exam taken) between January 1 and **December 31**. When you join or renew for the next membership year, you can select ten additional free webinars as early as January 1 of the following membership year. Access*

them at www.asce.org/freepdh. You are required to pass an exam on the webinar's content to receive a free PDH.

Unemployed?

ASCE National has a program to waive dues of unemployed members. For more information,

Write to:

ASCE

Attn: Member Services Dept.

1801 Alexander Bell Drive

Reston, VA 20191-4382

Or Call : Toll free: 1-800-548-ASCE Direct: 703-295-6169 Fax: 703-295-6335





About CSCE

The CSCE is the result of a merger of two organizations that occurred 30 years ago. The Connecticut Society of Civil Engineers was founded in 1884, while the Connecticut Section of the American Society of Civil Engineers was founded in 1919. In 1958, the Section had 523 members. In 1955 (the nearest comparable year for reliable numbers), the Society had 1,033 members. The two organizations met separately until they merged in 1981, by mutual vote of membership, to become the Connecticut Society of Civil Engineers Section of American Society of Civil Engineers or CSCE.

Civil Engineers design and build our increasingly complex infrastructure; work with government officials, citizens and businesses to promote better infrastructure maintenance and renewal; and build commerce in Connecticut and throughout the World. We serve diverse industries including government, consulting, construction, academics and manufacturing and we work in a variety of disciplines including geotechnical, environmental, structures, transportation, and water resources.

Contact Us

The 2021-2022 CSCE Executive Board thanks you for taking the time to read this newsletter. Should you have any questions, comments, or concerns - feel free to contact [one of our members](#).