

AUGUST 2024 NEWSLETTER



From the the President

Dear CSCE Members,

Stunning, shocking - those are just two ways to describe the recent devastation wrought by the extreme rainfall experienced here in parts of our state over the weekend of August 18th.

We know that the climate is changing here, and with these changes it is bringing warmer and wetter weather patterns to New England. To me the most shocking aspect of this storm, which I hope brings awareness to the larger public to the risks of climate change, was that it wasn't a result of a larger weather event such as the landfall of a hurricane or tropical storm system. We all remember the impacts of Hurricanes Sandy and Irene, and Tropical Storms Elsa and Isaias, but these systems bring with them days of advanced warning and very predictable patterns that meteorologists have a good understanding of how they will behave and with that brings advanced warning to the public. That was not the case with this system, and unfortunately, the likelihood of repeat systems like this one are only increasing due to a warmer wetter climate here.

As civil engineers, we have a unique responsibility to our communities and clients to be a source of knowledge, to understand these challenges, and to design and construct climate resilient and sustainable solutions to protect our local infrastructure and communities. I would like to use this moment to ask all members to take a moment and review the ASCE policy statement on the role of civil engineers in sustainable development, which can be found at https://www.asce.org/advocacy/policy-statements/ps418---the-role-of-the-civil-engineer-in-sustainable-development?_sm_byp=iVVlt6sNPnt4rbns or on the next pages of this newsletter.

Lastly, I hope you all continue to enjoy the remainder of your summer. School will be resuming soon, and with it so too will our monthly section dinner meetings. First up is September 10th at UConn. I look forward to seeing many of you there.

Sincerely,
Rich Cohen, P.E., M. ASCE

CONTENTS

4- CSCE ANNUAL SPONSORS - CHA, HNTB, SEABOARD DRILLING

6 - NEWS FROM ASCE

8 - UPCOMING EVENTS

15 - NEWS FROM CSCE

18 - VOLUNTEER OPPORTUNITIES

19 - EMPLOYMENT OPPORTUNITIES

ASCE Policy Statement 418 - The role of the civil engineer in sustainable development

Approved by the Committee for Sustainability on June 6, 2023

Approved by the Public Policy and Practice Committee on June 15, 2023

Adopted by the Board of Direction on July 22, 2023

Policy

The American Society of Civil Engineers (ASCE) defines sustainability as a set of environmental, social, and economic conditions (aka "The Triple Bottom Line") in which all of society has the capacity and opportunity to maintain and improve its quality of life indefinitely without degrading the quantity, quality, or the availability of environmental, social, and economic resources. Infrastructure shall be planned, designed, constructed, operated, and maintained, and decommissioned in a manner that addresses quantifiable and non-quantifiable environmental, social, and economic benefits and costs over its entire life cycle. Sustainable development is the application of these resources to enhance the safety, welfare, and quality of life for all of society.

Civil engineers shall be committed to the following ASCE Principles of Sustainable Development:

- Principle 1 - Do the right project: A proposed project's economic, environmental, and social effects on each of the communities served and affected must be assessed and understood by all stakeholders before there is a decision to proceed with a project. Consider non-structural as well as structural (built) solutions to the needs being addressed.
- Principle 2 - Do the project right: The civil engineer shall actively engage stakeholders and secure public understanding and acceptance of a project's environmental, social, and economic costs, risks, and benefits. To move toward conditions of sustainability, engineers must design and deliver projects that address sustainability holistically from concept to demolition or reuse.

ASCE supports the following steps to achieve a sustainable project:

- Consider project scope: Civil engineers can make the strongest impact if sustainable principles have guided the project infrastructure solution from the earliest phases of planning, which should additionally include involvement of civil design, construction, and operations engineers in the planning process.
- Perform life cycle assessment from planning to demolition or reuse: Project participants should use rigorous life cycle methodologies that quantify the environmental, social, and economic effects of the project.
- Use resources wisely, minimize use of non-renewable resources: Sustainable development shall include progressive reductions in resource use for a given level of service and resiliency. Engineers should not damage or diminish the ability of ecological systems to produce renewable resources or deliver services, nor should they manage non-renewable resources in a way that makes them unavailable for future use. That means recycling non-renewable resources or designing infrastructure assets so that at the end of life, elements can be reused or up cycled.

ASCE Policy Statement 418 - The role of the civil engineer in sustainable development (Continued)

- Incorporate resiliency: Resilience requires preparing for and adapting to changing conditions and being able to withstand and recover rapidly from disruptions. To be sustainable, environmental, social, and economic resources should address the impact of these changing conditions.
- Validate application of principles: Civil engineers must guide project development and validate the application of these principles by using metrics and rating tools such as the Envision™ Rating System for sustainable infrastructure.

Issue

ASCE recognizes the leadership role of engineers in sustainable development, and our responsibility to provide effective and innovative solutions in addressing the challenges of sustainability. ASCE holds paramount the safety, health, and welfare of the public. The ASCE Code of Ethics states that "Engineers shall:

- Adhere to the principles of sustainable development
- Address environmental, social, and economic impacts, along with opportunities for improvement, in their work
- Mitigate adverse environmental, social, and economic effects
- Use resources wisely while minimizing resource depletion"

ASCE works on a global scale to promote public recognition and understanding of the needs and opportunities for sustainable development and its contribution to healthy communities. Environmental, social, economic, and technological development must be seen as interdependent and complementary concepts, where economic competitiveness, social progress, and ecological sustainability are complementary aspects of the common goal of improving the quality of life.

Rationale

Civil engineers have a leading role in planning, designing, building, and ensuring a sustainable future by providing the bridge between science and society. In this role, engineers must actively promote and participate in multidisciplinary teams with other professionals, such as ecologists, economists, and sociologists, and work with the communities served and affected to effectively address the issues and challenges of sustainable development.

This policy has worldwide application. ASCE Policy Statement 418. First Approved in 1993

New CSCE Annual Sponsorship

The CSCE is excited to provide a new sponsorship and promotional opportunity for companies in CT! The benefits of the sponsorship include:

- PowerPoint slide recognition at every meeting – presented by CSCE
- Company logo included in emails promoting the meeting
- Company logo included on all the meeting/event invitations sent by CSCE
- 5 dinner meeting registration vouchers – These can be used all at one dinner meeting or spaced out throughout the year at multiple dinner meetings, but not at the ACE Awards event
- Includes PDHs for employees attending the meetings that offer PDHs
- Sponsorship recognition in CSCE Newsletter and on the CSCE website

Annual Sponsorship Cost for ASCE/CSCE firms (Firms with partnership relationships with ASCE or employ at least 5 CSCE members): \$2,000

Annual Sponsorship Cost for Non ASCE/CSCE firms: \$2,500

Please sign up today to support the activities of CSCE!

Thank you to our Annual Sponsors!

CHA **HNTB**

SEABOARD
DRILLING

New CSCE Annual Sponsorship

Annual CSCE Sponsorship Opportunity Form

The CSCE is excited to provide a new sponsorship and promotional opportunity for companies in CT!

Benefits of Sponsorship:

- PowerPoint slide recognition at every meeting - presented by CSCE
- Company logo included in emails promoting the meeting
- Company logo included on all the meeting/event invitations sent by CSCE
- 5 dinner meeting registration vouchers - These can be used all at one dinner meeting or spaced out throughout the year at multiple dinner meetings, but not at the ACE Awards event
 - Includes PDHs for employees attending the meetings that offer PDHs
- Sponsorship recognition in CSCE Newsletter and on the CSCE website

Annual Sponsorship Cost for ASCE/CSCE firms (Firms with partnership relationships with ASCE or employ at least 5 CSCE members): \$2,000

Annual Sponsorship Cost for Non ASCE/CSCE firms: \$2,500

Firm Name: _____

Firm's ASCE Membership ID Number: _____

First & Last Names and ASCE Membership ID Numbers of Firm's 5 Employees who are CSCE Members:

Firm Contact Name: _____

Firm Contact Phone: _____

Firm Contact Email: _____

Payment Options:

Card - Invoice can be sent via PayPal that can be paid with a card or check

Check - Please send checks to: CSCE, P.O. Box 1101, Deep River, CT 06417

Questions? Please send an email to csceinfo@gmail.com or call/text 860-879-2723 (CSCE)

ASCE Recognizes 2 CSCE Members in 2024

CONGRATULATIONS

CSCE MEMBER RANDALL STATES, P.E.



ASCE Region 1

2024 Practitioner Advisor Award Recipient

Do you have time to be a Practitioner Advisor?

Every ASCE Student Chapter should have two Practitioner Advisors (PAs). In Connecticut, there are only 2 PAs currently. PAs are members of the Society who reside within convenient distance of a university, but who are not full-time faculty members of that, or any other university. Ideally, one of the Practitioner Advisors is a Younger Member of the Society (aged 35 or younger). The primary role of the Practitioner Advisor is to motivate, encourage, offer constructive criticism, compliment, question, and be an example of high-caliber professional performance. If you would like to learn more about becoming a PA, please send an email to csceinfo@gmail.com or call/text CSCE at 860-879-2723.

ASCE Recognizes 2 CSCE Members in 2024 (Continued)

CONGRATULATIONS

**BYUNGKIK CHANG, PH.D.,
P.E., MBA, M.ASCE**

CSCE Member and
Professor and Chair of the
Department of Civil and
Environmental Engineering,
in the Tagliatela College of
Engineering at the
University of New Haven



ASCE Region 1
2024 Faculty Advisor Award Recipient

UPCOMING EVENTS

9/3 YMG RESUME REVIEW AT UNH

9/10 CSCE DINNER MEETING AT UCONN STORRS

9/11 FALL CAREER FAIR AT UNH

9/11 FREE TECHNICAL TOUR OF AQUARION TRAP FALLS RESERVOIR IN SHELTON, CT SPONSORED BY YMG

9/12 UCONN ASCE FUTURE LEADERS INTERNSHIP NIGHT

9/21 YMG TRAIL WORKDAY WITH CFPA & EWB IN MIDDLEFIELD

9/27 3RD ANNUAL GEO-CT GEOTECHNICAL CONFERENCE

10/10 STRUCTURAL ENGINEERING SEMINAR

10/15 CSCE DINNER MEETING AT CT STATE THREE RIVERS

September 3 6:30 p.m.

Resume Review at the
University of New Haven



Volunteers Needed Pizza Provided

**This is a great opportunity to
connect with future civil engineers!**



If you can help at this event, please email
CSCEYMG@gmail.com or TJWamser@tighebond.com.



CONNECTICUT SOCIETY
OF CIVIL ENGINEERS

YOUNGER MEMBER GROUP



REGISTER TODAY

SEPTEMBER 10, 2024

CSCE DINNER MEETING AT UCONN



2024 ACE Award Winner for Traffic Design
UConn Science 1 Intersection Improvements
Presenters: Will Kresic, P.E., PTOE, Eric Nigosanti,
P.E., and Joseph Balskus, P.E., PTOE, RSP1, of VHB



As part of the University of Connecticut's landmark Northwest Science Quad project, the VHB team designed a unique hybrid roundabout—first of its kind on the Storrs campus. Right-sized to fit the constraints of a small hillside site across from a parking garage, the roundabout has transformed an intersection plagued by congestion and pedestrian safety issues into a safe and smoothly flowing connection to the new Science 1 building.

SAVE THE DATE

SEPTEMBER 11, 2024

ASCE STUDENT CHAPTER EVENT



University of New Haven

CAREER DEVELOPMENT CENTER

FALL 2024 CAREER FAIR

DAY 1: BUSINESS, ENGINEERING, SPORTS, ARTS & ENTERTAINMENT

Your Next Hire is Here...

Meet with our top students & alumni from Business, Finance, Marketing, Analytics, Civil/Electrical/Mechanical Engineering, Media, and more!

Share information about your organization and open roles. Internships, part/full-time job opportunities of all types welcome!

Registration: For-Profit \$400 | Non-Profit \$275

BECOME A CHARGER PARTNER: Interested in sponsoring this event for KEY promotion opportunities? Contact us!

To Register, Visit Handshake or Go To: www.newhaven.edu/employers

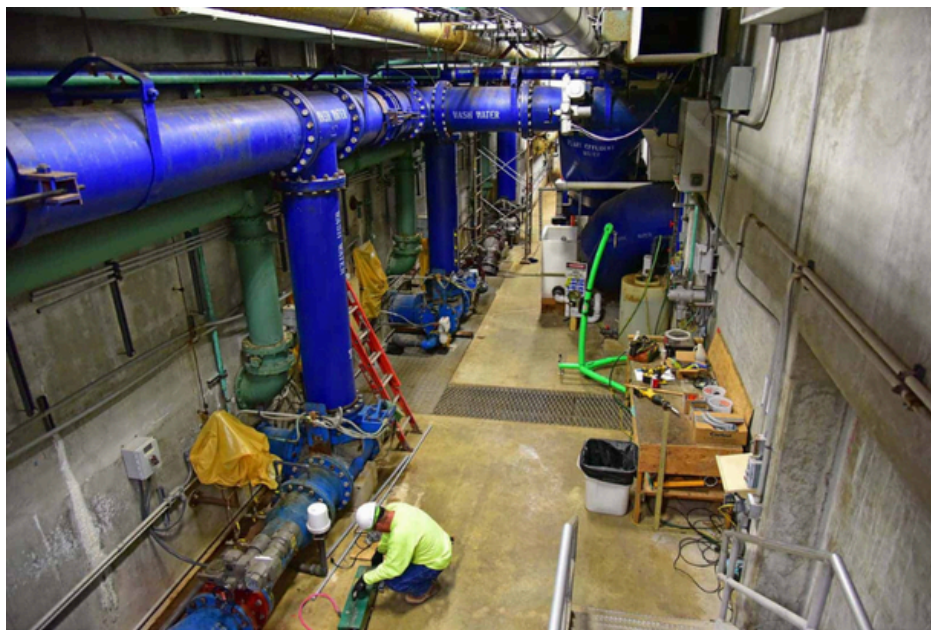


POWER ON

WEDNESDAY, SEPT 11, 2024
 1PM-4PM (CHECK-IN 11AM)
 BECKERMAN REC CENTER

QUESTIONS? Email: bizzat@newhaven.edu

...and make sure to follow us on Instagram at [unewhaventcdc](https://www.instagram.com/unewhaventcdc)!



September 11
4:00 p.m.
FREE
Technical Tour
of Aquarion
Trap Falls
Reservoir
Shelton, CT

SAVE THE DATE

SEPTEMBER 12, 2024

ASCE STUDENT CHAPTER EVENT

UConn ASCE FUTURE LEADERS INTERNSHIP NIGHT

SEPTEMBER 12, 2024
6:00PM - 8:00PM



HELP US HELP YOU

Join us for a night of networking and recruiting the best UConn Civil and Environmental Engineering students! Internship placements through our Future Leaders program provide an opportunity for our most promising students to work with the best companies in the field. In turn, participation provides your company benefits including connections with future employees, increased visibility in the UConn community, and the contributions of leading UConn students. Food and beverages will be provided. Spaces provided on a first come first serve basis.

TIERS

- | | |
|--------------------------------------|--|
| Bronze \$400 | Platinum \$1,000 |
| Gold \$750 | • Priority for company presentation or office/site visit |
| • Preferred for company presentation | • Priority spot on event banner |
| • Spot on event banner | • Social media spotlight |

YOUR BENEFITS

- Meet top UConn Engineering students
- Exclusive Meet & Greet networking event
- Your company featured in recruitment materials
- Featured on CEE website Internships page
- Future collaboration with UConn's ASCE and SEI chapters

DATES

August 16, 2024
Registration Deadline

September 12, 2024
Networking Event

CONTACT

For more information, contact:
Gavin Berger, President
ASCE UConn Student Chapter
asce.uconn@gmail.com

**LIMITED
SPACES
AVAILABLE**

**RESERVE YOUR
SPOT TODAY!**

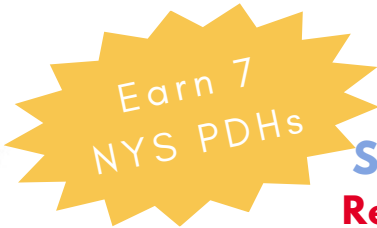


<https://t.ly/dnhUL>





GEO-INSTITUTE
Connecticut Valley Chapter



GEO-CT Geotechnical Conference

Friday, September 27, 2024
Sheraton Hartford South, Rocky Hill, CT
Register on www.csce.org or www.geo-ct.org

Staying over on Thursday night? Check out the link for Discounted Hotel Rooms on www.csce.org

Please mark September 27th on your calendar for GEO-CT 2024! GEO-CT is our annual geotechnical conference held at the Sheraton Hartford South right off exit 23 in Rocky Hill, CT. This year's conference will present a variety of geotechnical topics including case studies, deep foundations, ground improvement, and more.

Sponsored By:



menARD

GEOPIER[®]

A Division of CMC



HELICAL

Geotechnical Design/Build



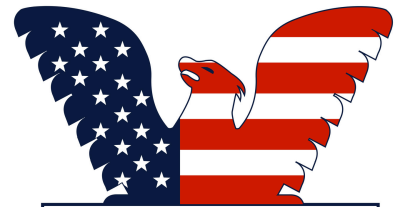
KELLER

BRUGG

Geobrugg



HUB
FOUNDATION



PHOENIX
FOUNDATION COMPANY, INC.



Registration Rates Extended to 9/7 (Regular Rates)

- ASCE Member - Includes NYS PDHs - \$275 (\$325)
- Non ASCE Member - Includes NYS PDHs - \$350 (\$375)
- Government Employee and Retired People - Includes NYS PDHs - \$100 (\$120)
- Younger Member - Under 35 Years of Age & Includes NYS PDHs - \$175 (\$200)
- Student/Faculty Registration - ID Required at Registration - No NYS PDHs - \$25 (\$35)
- Exhibitor - \$800 (Includes 1 Attendee & 1 Exhibit Table)
- Concrete Sponsorship - 3 Available - \$1,000



This sponsorship level includes display of logo on promotions & program, 1 invitation for reception on 9/26, podium mentions, & 1 attendee registration.

SAVE THE DATE

OCTOBER 10, 2024

SEI-CT SEMINAR

CSCE STRUCTURAL ENGINEERING SEMINAR

OCTOBER 10, 2024
8:00-4:00 P.M.

Profits from CSCE continuing educational activities fund CSCE's scholarships.



Connecticut Chapter

**MDC OPERATIONS
 FACILITY &
 TRAINING CENTER,
 125 MAXIM ROAD,
 HARTFORD, CT**

Available Sponsorships

Morning Break Sponsorship **\$500 2 Available**

This sponsorship level includes 1 exhibit table, your company logo on table placards during the morning break & networking break, podium mentions, and 1 attendee registration.

Program Sponsor **\$1,000 2 Available**

This sponsorship level includes 1 exhibit table, your company logo on the program cover and on table placards during all breaks including the lunch break, podium mentions, and 1 attendee registration.

Early Registration Rates until

September 13, 2024

ASCE Member
 (includes NYS PDHs)
 - \$250

Non-ASCE Member
 (Includes NYS PDHs)
 - \$300

**Government &
 Educational
 Institution Employee
 & Retiree (Includes
 NYS PDHs) - \$100**

**Younger Members
 (Under 35 & Includes
 NYS PDHs) - \$175**

**Student (Student ID
 Required at
 Registration - No
 NYS PDHs) - \$30**

Afternoon Break Sponsor **\$500 2 Available**

This sponsorship level includes 1 exhibit table, your company logo on table placards during the afternoon break & networking break, podium mentions, and 1 attendee registration.

Registration Sponsor **\$400 1 Available**

This sponsorship level includes the opportunity to place a banner & promotional materials at the registration table, your company logo on table placards during the morning & networking breaks, podium mentions, & 1 attendee registration. Note: This level does not include an exhibit table.

[Register on www.csce.org](http://www.csce.org)

EARN 6 NYS PDHS

Scheduled Presentations & Speakers

A Case Study of Ultra-High Performance Concrete Invert Linings for the Rehabilitation of Corrugated Metal Pipe Culverts by [Brian Lassy, EIT, of the University of Connecticut](#)

FHWA's Resources and Solutions for Bridge and Tunnel Security Engineering by [Vincent P. Chiarito, P.E., F.SEI, of the Federal Highway Administration, Office of Infrastructure](#)

Vessel Collision Evaluations for Major Bridges by [Matthew Lengyel, P.E., S.E., PMP, CBI, of GM2, Inc.](#)

Design Development & Construction Challenges of the Onondaga County Canalways Trail Extension Project by [Alexander S. Kerr, P.E., PTOE and Kimberly Fletcher, P.E., of Barton & Loguidice](#)

A Snapshot in Time (Digital Twins) by [Chase Gallik, EIT, and Hannah Rakowski, P.E., of Wiss, Janney, Elstner Associates](#)

R. Buckminster Fuller (1895-1983)'s Engineering Challenge by [Chad T. Morrison, P.E., F.ASCE, of the Berlin Steel Construction Company](#)

REGISTER SOON

OCTOBER 15, 2024

CSCE DINNER MEETING AT
THREE RIVERS

TUESDAY, OCTOBER 15, 2024 **EARN 1
NYS PDH**

CSCE Dinner Meeting at CT State Community College Three Rivers
5:30 Registration & Social Hour followed by a Buffet Dinner & Presentation



Join colleagues & Three Rivers students for a presentation by Jim Cole, P.E., MBA, PMP, Vice President of Projects at Avangrid, on the importance of civil and structural engineers in every aspect of the design and construction of high power electrical systems.



STRUCTURAL
ENGINEERING
INSTITUTE
Connecticut Chapter

CT STATE
COMMUNITY COLLEGE
Three Rivers

The newly re-established Fairfield County Branch of the Connecticut Society of Civil Engineering recently hosted its first branch social event at the Brewport Brewery on August 15, 2024. The event was attended by 15 civil engineers representing several engineering companies from the surrounding areas. Participants enjoyed a delightful social gathering with pizza, creating a welcoming atmosphere ideal for networking and engaging with the new branch leaders.

The event was a resounding success, fostering valuable connections and collaboration among professionals. A heartfelt thank you to the organizers and our sponsor, Kleinfelder, for making this wonderful event possible.

We look forward to hosting future events in the Fairfield County area. Our next meeting is planned for March 25, 2025. We hope to see you there!



YOUNGER MEMBERS GROUP

AUGUST 27, 2024

Trip to the Ballpark



The YMG held its yearly Yard Goats outing at Dunkin Park in Hartford, CT, on August 27, 2024. A buffet was provided during a social in a private area before the start of the game. Drinks were available for purchase nearby. Thirty-three attendees were able to network in the private area and enjoy a night of fun with their peers.



COMMITTEE REPORT

HISTORY & HERITAGE

CONNECTICUT FLOODS

The recent flooding in Fairfield and New Haven counties and surrounding area is an echo of other natural disasters in Connecticut history. The 1938 Connecticut Society of Civil Engineers annual report presented a three-part summary of a joint effort by state water commissions of Vermont, New Hampshire, Massachusetts, and Connecticut to coordinate flood control. The 1939 annual report published four papers on the effects and damages from the 1938 hurricane and an article about shore damage and shore protection. The 1946 CSCE annual report discussed planning for flood control projects.

The 1938 articles are "Historical Account of Flood Control Compacts for the Connecticut River", "Water Power Proposals Which Have Entered into the Writing of the Compact", and "Discussion of the Legal Questions Which Have Arisen in Connection with the Compact, with Certain Conclusions." The content of these articles is self-evident from the titles and are available on request as pdf scans for anyone interested.

Six months after publication of the previously noted articles, the 1938 flood (and hurricane) set new records in many parts of the state, and New England, dropping as much as 17 inches of rain over a five-day period in the Portland, CT area. In other parts of the state the floods of March 1936 dropped more water than the hurricane rainfall. The 1936 and 1938 records exceeded previous records by as much 300%.

"The Hurricane Flood of 1938", published in 1939, describes data collection and analysis from gaging stations installed after 1929. The article presents several hydrographs and a summary of flood discharges from several watersheds. The Connecticut Water Commission was established in 1925 and the U. S. Geologic Survey established an office in Hartford in 1929. The first of 35 new gaging stations was constructed in 1929 appending the two stations already in service.

Other articles from 1939 describe damages to specific infrastructure - "Effects of the Hurricane on the Connecticut Telephone Plant", "Some Aspects of Hurricane Damage to Public Utilities", and "Shore Damage and Shore Protection." The latter article references the 1938 hurricane many times, but presents a comprehensive primer on the theories and hypothesis of damage and rehabilitation mechanisms, and summarizes proposed remedies.

For further information or copies of available articles, please contact Randall States, P. E., randall.states@gmail.com.

The 1946 annual report published "Engineering Aspects of Flood Control in New England" (also available as a pdf on request) presents hydrographs and rainfall accumulation maps, summarizes flooding events from the previous two decades, and identifies information sources going back to 1639. Flood control reservoirs and construction of levees are proposed in the article. Funding was anticipated from federal sources and the New England states various flood control agencies.

SEEKING HIGH SCHOOL INTERNSHIP OPPORTUNITIES

Avon High School is looking for civil engineering internships for high school students. Its unique Internship Program, launched in 2014, matches highly motivated junior and seniors with local businesses and organizations for experiential internships during the academic year or summer months. Interns work for 60 (unpaid) hours, maintain reflective journals, and create a presentation for our school community at the end of the program. In return, the students earn .05 credit. The internship provides opportunities for our students to spark their curiosity, develop skills, and gain insight towards potential career pathways. If your company would be interested in providing an internship, please send an email to Maria Mascoli, Internship Coordinator - Avon High School, at mmascoli@avon.k12.ct.us or connect with her on LinkedIn.



CSCE CONNECTING WITH SCHOOLS

For High Schools:

If you know of a high school that would be interested in getting information about careers in civil engineering, please contact CSCE via email at csceinfo@gmail.com. CSCE Members would be very interested in connecting with high school students (virtually or in-person) to share information about career opportunities in civil engineering and related fields.

For Middle Schools:

If you know of a middle school that is having a career day or has teachers who want to share information about civil engineering with their students, the CT Section of ASCE (CSCE) can help provide speakers who can talk to students about civil engineering & bring handouts such as brochures & flyers. Please contact CSCE via email at csceinfo@gmail.com for more information.

Wallingford, CT, Area Companies Wanted for Job Shadows/Internships for High School Students

CSCE received a request from a College and Career Counselor at Mark T. Sheehan High School and Lyman Hall High School for the names of companies near Wallingford, CT, that would host high school students who are interested in civil engineering in a job shadow or internship capacity. Here are details about the internships: Internships are 40 hour opportunities. They generally take place over the course of 10 weeks, 4 hours a week, 2 days a week for 2 hours each (Very often something like 2:30- 4:30 p.m.). Internships must take place after school. The schools ask that they be experiential in nature with the understanding that this is a high school student and what they might be able to contribute is limited. They also understand that there will be a large shadow component too. Students earn .25 credit for an internship and this goes on their high school transcript. There is minimal paperwork expected from the company/ mentor. The state requires some signatures essentially agreeing to abide by labor laws and the school asks that companies sign a student's time sheet, and complete a short, final evaluation of the students performance. If you know of any companies that offer this type of job shadowing/internship in the Wallingford area, please send an email to csceinfo@gmail.com.

EMPLOYMENT OPPORTUNITIES

Norwich, CT - Civil Engineer

The City of Norwich is seeking a full-time City Engineer. Duties include directing the operations of the Engineering Division through civil engineering staff and administers and evaluates the design of engineering projects, the review of engineering plans, the drafting of specifications and the inspection of engineering projects under construction. Acts for the Director of Public Works in his or her absence, or as assigned. A bachelor's degree in civil engineering from an accredited college or university, plus seven years of progressively responsible civil engineering experience including some supervisory experience is required. Must have a State of CT Professional Civil Engineer license and a valid Connecticut driver's license. If engineer license is in a state other than Connecticut, must obtain a Connecticut license within one (1) year from date of appointment. License for land surveying is desirable. To see full job description and apply please click here or visit <https://www.norwichct.org/718/Employment-Opportunities>

Life Member Group in CSCE?

There are many exciting and valuable activities in CSCE that could benefit from a Life Member's expertise such as Engineers Week, mentoring programs for college students in one of our ASCE Student Chapters, mentoring Younger Members, giving a presentation at a monthly dinner meeting or annual professional development seminar, and helping to prepare CSCE's 2026 Infrastructure Report Card for Connecticut. There are now 258 Life Members in CSCE, which represent about 17% of CSCE's membership. If you are a Life Member who is interested in getting more involved with CSCE by being a part of a fledgling Life Member Group, please send an email to CSCE at csceinfo@gmail.com or call/text 860-879-2723.

EMPLOYMENT OPPORTUNITIES

TPA Design Group – Civil Engineer

TPA Design Group is a multi-disciplinary consulting firm with over 75 years of experience in providing site planning, engineering, and landscape architecture services to clients throughout Connecticut and New England.

We are seeking a Connecticut-licensed PE with at least five (5) years of practical experience including hydrology, storm drainage and sanitary sewer design, utility layout, site and roadway layout, grading and erosion control.

The ideal candidate will demonstrate competency with basic professional skills including ability to communicate verbally and in writing with colleagues, allied disciplines, clients, and the public. Proficiency with AutoCAD Civil 3D and Hydrologic/Hydraulic modeling software is required. Candidates should have prior experience and good working knowledge of local, state, and federal permit processes including presentations before municipal and/or regulatory review boards. This position involves occasional travel within Connecticut for field work and meetings. Salary range for this position is \$130,000 to \$150,000 to be negotiated based upon experience and project examples. This position is for full-time employment (40 hours per week) and includes health, dental, and other benefits. Remote work and/or work from home arrangements will be considered.

TPA Design Group is an Equal Opportunity Employer. Please send a cover letter and resume in confidence to: TPA Design Group, 85 Willow Street, New Haven, CT 06511. For more information, please contact David Golebiewski, david@tpadesigngroup.com.

Town of Newington – Engineering Technologist

The Town of Newington is accepting applications for an Engineering Technologist I in the Engineering Department that will provide technical support for the planning, design and construction of a variety of municipal improvement projects with a starting salary of approx. \$76,300. For additional information and an Employment Application, visit the Human Resources page at www.newingtonct.gov. This position will remain open until filled.

EMPLOYMENT OPPORTUNITIES

Siefert Associates - Project Engineers

Siefert Associates, LLC is seeking 8+ yrs experienced Project Engineers with technical Structural and/or Geotechnical skills. Work includes producing, checking and delivering Bridge Design, temporary support structures, demolition & erection plans, construction loading on structures, engineered lift plans, rigging design/analysis, crane layout, shoring towers, excavation, cofferdams, pile formation (and much more). Must have Bachelor's or Master's Degree in Engineering and hold a P.E. License.

City of West Haven, CT - Civil Engineer

The City of West Haven, CT, is accepting applications for an Assistant Engineer in its DPW. This is a 35-hour a week position that is responsible for technical work in the conduct of topographic and boundary surveys design and drafting for public works projects, and the inspection of municipal public works construction projects. This engineer will also work in concert with the City Engineer on municipal engineering projects. To apply, please click [here](#) or visit www.cityofwesthaven.com.

Langan - Senior Geotechnical Project Manager / Engineer

Langan is seeking a Senior Geotechnical Project Manager / Engineer in New Haven, CT managing client interaction, providing staff training and project leadership, preparation of technical reports, specifications, plans, designing foundations, retaining walls, & other geotechnical aspects of construction. Langan is an affirmative action / EOE

Apply here: <https://careers.langan.com/job/New-Haven-Senior-Geotechnical-Project-Manager-CT-06511-6107/930118600/>



Zeid Alkas, Area Manager
 973-557-7667 800-477-2506
sales@geo-instruments.com
www.geo-instruments.com

**INTERESTED IN POSTING A JOB
 OPENING OR AD ON THE CSCE
 WEBSITE OR IN THE
 NEWSLETTER?**

Please fill out the [Sponsorship Request Form](#) found on the Resources page of www.csce.org and send it to csceinfo@gmail.com. Once that information is received, CSCE will provide a cost estimate to you.

EMPLOYMENT OPPORTUNITIES

Luchs Consulting Engineers - Civil Design Engineer

Luchs Consulting Engineers is a multi-disciplined engineering & surveying firm based in Meriden, CT. We have an immediate opportunity for a Civil Design Engineer with the following qualifications:

- BS Degree in Civil Engineering; EIT or NICET a plus
- 3-7 years' experience in CTDOT design environment
- Roadway Drainage Design/HEC-RAS Hydraulic experience required
- Knowledge of MicroStation or AutoCAD required

Comprehensive Benefit Package - Please email resumes to:

dcrandall@luchs.com

Down To Earth Consulting - Senior Project Engineer

Down To Earth Consulting is seeking a Senior Project Engineer to join our geotechnical group in Naugatuck, CT. The successful candidate should have a BS degree from an ABET accredited civil engineering program, 5 to 10 years of experience, and be a licensed PE. Down To Earth Consulting is an Affirmative Action/Equal Opportunity Employer. To learn more about this opportunity, please submit your resume to ray@downtoearthconsulting.com

Conlon Engineering - Structural Engineer

Conlon Engineering, a growing structural design firm in Brookfield, CT is seeking a structural engineer with 0-3 years of experience doing design work and calculations. We are looking for a smart, hardworking engineer who wants to be part of a profitable firm that is set up for sustainable growth. Visit our website at conlonengineering.com and email resumes to office@conlonengineering.com

Pereira Engineering - Civil Engineer, Land Surveyors and Survey Technicians

Pereira Engineering is an established Civil/Environmental/Land Surveying firm located in Shelton, CT. PE is seeking a Civil Engineer as well as Land Surveyors and Survey Technicians (at all levels of experience) to expand our Survey Department. PE offers a very competitive salary and benefits. Please email resume to: joe.pereira@pereiraeng.com.

CSCE Event

Registration/Emails will be Changing this Summer From Constant Contact to Thrive/Informz

The platform you've been receiving communication from CSCE is switching to a new platform that integrates with ASCE Collaborate this summer. Here's what this means to you:

- ASCE is offering a new email preference center. You can update your notifications settings here: <https://info.asce.org/section-branch-email-preferences>
- Different IP address. To ensure you still receive communications from CSCE, we recommend you whitelist 205.201.40.61 and 205.201.40.49
- CSCE's emails will look different, but the content will be the same.

Please contact CSCE if you have any questions about this change.

ARE YOU UNEMPLOYED? ASCE NATIONAL HAS A PROGRAM TO WAIVE DUES OF UNEMPLOYED MEMBERS. FOR MORE INFORMATION, WRITE TO:

ASCE, ATTN: MEMBER SERVICES DEPT.,

1801 ALEXANDER BELL DRIVE, RESTON, VA 20191-4382

OR CALL : TOLL FREE: 1-800-548-ASCE DIRECT: 703-295-6169 FAX: 703-295-6335