

THE

# INFORMANT

NEWSLETTER OF THE MAINE SECTION ASCE

October 2023



## From the Editor:

It's *SPOOKY* Season *AND* Friday the 13<sup>th</sup>!

October is rolling along, and we are excited to offer two Spooktacular events this month. Show off your skills at a YM Pumpkin Carving Contest or meet up to tour the potentially HAUNTED?? (*just kidding*) Dragon Cement Plant before it closes. WTS is excited to be hosting a women-owned business networking event at a new(er) brewery in my hometown of Lisbon Falls!

We hope to see you soon!

Heather



Page 1 – From the Editor

Page 1 – Save the Date(s) &

Reminders for the Maine  
Section of ASCE

Page 2 – President's Message

Page 3 – ASCE Monthly Meeting

Page 4 – The Wicked Data Min-ah

Page 5 – YM Pumpkin Carving!

Page 6 – WTS Networking Event

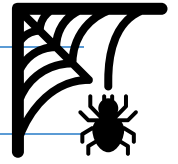
Page 7 – Looking for Employment?

Page 8 & 9 – Advertisements

## Maine Section ASCE - Save the Date(s)

October 2023

1	2	3	4	5	6	7
8	9	10	11	12	13	14
15	16	17	18 Transportation on Tap - Flight Deck	19	20	21 YM Pumpkin Carving!
22	23	24	25 WTS DBE Networking	26 Dragon Plant Tour & Happy Hour	27	28
29	30	31 Halloween! 	Nov 1	Nov 2	Nov 3	Nov 4



## President's Message

Greetings All,

I hope that everyone had a great September. We had a great turnout at the Portland Observatory and got to take a tour of an ASCE historic landmark. Fun fact, the Portland Observatory was built by shipbuilders, they used 122 tons of stone rubble to ballast the building against overturning! Photos from our tour are below.

This month's meeting and will be along the same lines as last months with a tour of Dragon Cement in Thomaston. Another ASCE historic landmark that unfortunately will be idling operations in the upcoming months.

While the weather is nice, we are hoping to get one more outdoor monthly meeting/site visit in so if you are working on an interesting project that is under way and don't mind giving a tour to your fellow civil engineers please don't hesitate to reach out.

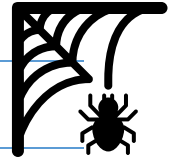
Keep a lookout for volunteering opportunities and fun facts in The Informant moving forward.

Thanks,

**Nate Powelson, P.E.**

Maine Section ASCE President





# Thursday October 26, 2023

## Maine Section ASCE Tour and Happy Hour!

Earn 1 PDH!



### *Dragon Products Company*

Presented by: Dragon Products Company

Come for a tour of the Dragon Products Company at 107 County Road (Route 1) in Thomaston, Maine. The tour will include a tour of the plant as well as the quarry. Dragon will supply PPE, long pants and work boots are required.

The Dragon cement plant has been in operation since the early 1900's and was designated an ASCE Landmark in 2005. The quarry is the largest limerock body in the state of Maine.



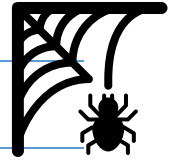
**Cost: Free!**

Please RSVP by Friday October 20, 2023, contact **Justin Yaitanes** Email: [jyaitanes@hntb.com](mailto:jyaitanes@hntb.com)

**Schedule:**

4:00 - 5:00 PM **Guided Tour**

5:00 – 6:00 PM **Happy Hour – Location TBD**



# THE WICKED DATA MIN"AH"

## #03 COVERED BRIDGES, A LEGACY NEVER FORGOTTEN



47

# of active public and private wooden covered bridges in Maine, crossing rivers, ponds, streams, a driveway, and even dry land.

Source: <https://www.coveredbridgesociety.org/cb-index.html>



70

feet in length, Lovejoy Bridge, Andover, Maine's shortest covered bridge.

Source: <https://www.maine.gov/mdot/historicbridges/coveredbridges/>



1857

year that the Hemlock Bridge was built, one of the oldest maine wooden that carries traffic.

Source: <https://www.maine.gov/mdot/historicbridges/coveredbridges/>



1988

year the Little Black River Covered Bridge in Allagash Plantation was the last wooden covered bridge to be deliberately removed.

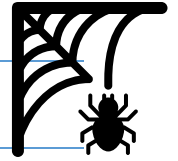
Source: <https://www.coveredbridgesociety.org/cb-index.html>



ARTIST'S BRIDGE

Sunday River Bridge in Newry is the most painted (by artists) in Maine. Closed to traffic since 1958.

Source: <https://www.coveredbridgesociety.org/cb-index.html>



# MAINE SECTION YOUNGER MEMBERS PUMPKIN CARVING



## The Carving!

**Bring your own pumpkin and carving kit.** Use a stencil or create your own design. If you cannot find a pumpkin or carving kit let us know when you RSVP and we may be able to find one.

## The Competition!

Once all the pumpkins are carved we will cast our votes and chose the overall best pumpkin.

**21 October 2:00 PM**

Meet at P3 Park by the plane

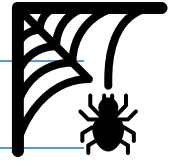
[62 Pegasus St, Brunswick, ME 04011](#)

Optional Drinks at Flight Deck Brewing afterwards

**Please RSVP by October 18<sup>th</sup>!**

E-mail Thomas Gleeson at  
[thomas.gleeson@stantec.com](mailto:thomas.gleeson@stantec.com)

**ASCE** YOUNGER MEMBERS



## Celebrating Woman Owned Businesses



- Wednesday, October 25th 5:30 PM
- Olive Pit Brewing  
16 Main St, Lisbon Falls
- Please join us for networking  
and drinks at Olive Pit  
Brewing



Pricing:

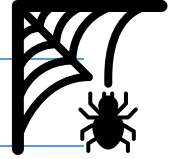
Member: \$20

Non-Member: \$25

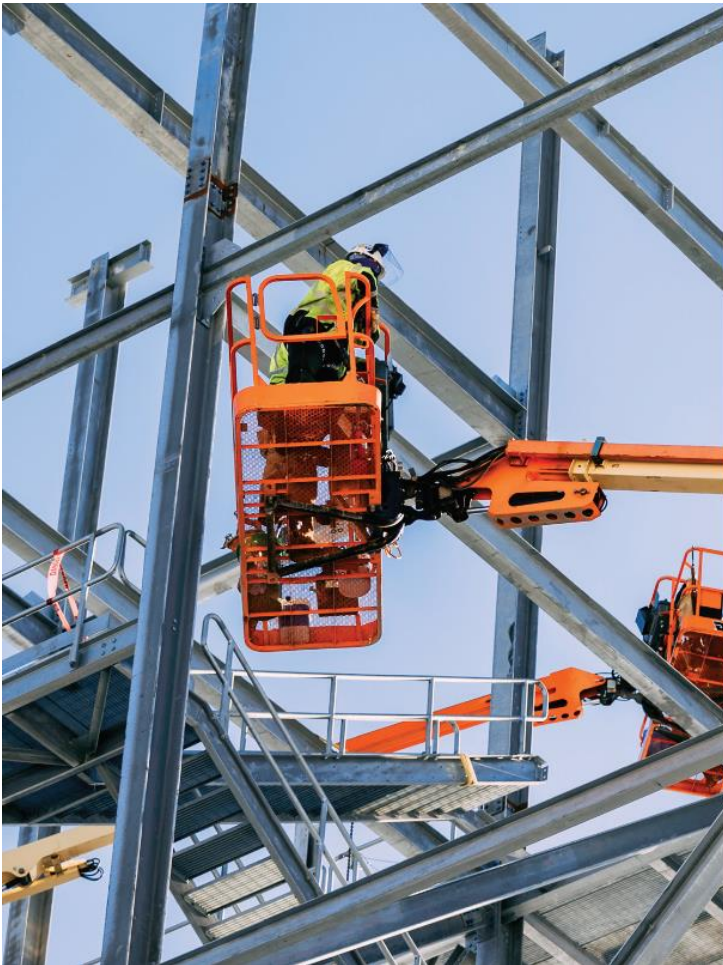
Public Sector Member: \$15

Please help us celebrate our woman owned business members by joining us at Olive Pit Brewing (a woman owned brewery)! Ticket price includes a 16oz pour of a beer of your choosing and pizza. **We look forward to seeing you!**

[Register Here!](#)



## Looking for Employment?



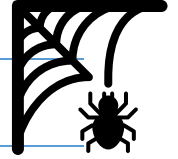
### **CIANBRO**

#### **CONSTRUCTION STRUCTURES ENGINEER**

We are currently seeking a Construction Structures Engineer with a four-year engineering degree, minimum of five years' experience in design engineering, and a strong understanding of structural engineering fundamentals. Experience in bridge/heavy civil, dam, concrete, steel, pile driving, cofferdam, and/or geotechnical projects is a plus. We encourage you to apply today.

**TO APPLY VISIT [CIANBRO.COM](https://cianbro.com)**






# AER

## AGGREGATES

**Maine,  
We're Hiring**

[powereng.com/careers](http://powereng.com/careers)



- Culvert Rehabilitation projects
  - Snap-Tite, CMP, Large Diameter HDPE
- Inflow & Infiltration Solutions (Cretex)
  - Pro-Ring, Pipe/MH & Frame Seals
- Low Density Cellular Concrete used for geotechnical & pipe fill applications



CONTACT: Don LeBlanc, P.E.  
207-992-3080  
don@dlvevs.com





Est. 1974

## MAIN-LAND

DEVELOPMENT CONSULTANTS, INC.

*Engineers, Surveyors, Scientists*

Professional Land Surveying • Professional Engineering • Certified Soils Science  
Wetlands Delineation • Geotechnical Engineering • Hydrogeology • Forestry

(207) 897-6752  
69 Main St, PO Box Q  
Livermore Falls

[www.main-landdci.com](http://www.main-landdci.com)  
[mainldc@main-landdci.com](mailto:mainldc@main-landdci.com)  
 Fax: (207) 897-5404



## WENTWORTH

PARTNERS & ASSOCIATES

*Connecticut • Florida • Maine • Massachusetts  
New Hampshire • New York • Rhode Island*

31 Commercial Street  
 PO Box 2285  
 Skowhegan, ME 04976  
 Office: 207-858-8010 [wpa-design.com](http://wpa-design.com)

110 Haverhill Road  
 Building B, Suite 203  
 Amesbury, MA 01913  
 Office: 978-792-5945



Providing Civil Engineering  
Design and Consultation services  
throughout Maine with a focus  
on **Water Resources and  
Civil Infrastructure.**

ACADIA CIVIL WORKS  
 ENGINEERING DESIGN & CONSULTATION

207.212.9350  
[acadiacivilworks.com](http://acadiacivilworks.com)  
[jmclean@acadiacivilworks.com](mailto:jmclean@acadiacivilworks.com)



## GORRILL PALMER

Relationships. Responsiveness. Results.

207.772.2515 office  
[www.gorrillpalmer.com](http://www.gorrillpalmer.com)

300 Southborough Drive, Suite 200  
 South Portland, ME 04106



## R.W. Gillespie & Associates

- Geotechnical Engineering
- Environmental Consulting
- Materials Testing Services

Biddeford, Maine 207-286-8008  
 Newington, New Hampshire 603-427-0244  
 Mansfield, Mass. 508-623-0101  
[www.rwgillespie.com](http://www.rwgillespie.com)

 **Stantec**

**30 Park Drive**  
Topsham, Maine 04086  
207.729.1199

**2211 Congress Street, Suite 380**  
Portland, Maine 04102  
207.883.3355

**Design with  
community in mind**  
stantec.com

**Do you run your own consulting firm, or have a business that the Maine engineering community should know about? Advertise with a business card! Business card listings run for 1 year, including 9 issues of the Informant and full time on the website. Cost: \$150.00**  
**Discounts Available: Purchase a 1-year Business Card ad and receive a \$25 discount on a Job advertisement!**

Advertise for new employees at any level – students, EITs, and PEs will all see your ad.  
Job advertisements are posted in one issue of the Informant and on our Facebook page.

Cost:

- Quarter Page (3.75"x5") - \$35
- Half Page (7.5"x5") - \$75 for 1 month
  - \$500 for 1 year (9 issues)
- Full Page (7.5"x10") - \$150 for 1 month
  - \$1000 for 1 year (9 issues)

Would you like to advertise in the Informant? Take a look at our rates above, and contact the editor at [Informant.ASCEMaine@gmail.com](mailto:Informant.ASCEMaine@gmail.com) with any questions

**The deadline for submissions is the 20<sup>th</sup> of each month prior to publication.**