

THE

INFORMANT

NEWSLETTER OF THE MAINE SECTION ASCE

May 2025



From the Editor:

May is here!

You can find the registration details for the **Maine Section's 75th Anniversary** on page 3 of the newsletter. *Please make sure to register by Tuesday, May 20th.*

There are several sponsorship opportunities available for both the 75th Anniversary and the Scholarship Golf Tournament:

- **75th Anniversary:** 1 Diamond, 1 Platinum, Silver, and Bronze Sponsorships are available. *Deadline to be included in printed material is Friday 5/16.*
- **Scholarship Golf Tournament:** Lunch and Hole Sponsorships are available.

If you need more information, feel free to email me.

We hope to see you soon!

Heather

Page 1 – From the Editor

Page 1 – Save the Date(s)&
Reminders for the Maine
Section of ASCE

Page 2- President's Message

Page 3- 75th Anniversary Gala

Page 4 - The Wicked Data Min-ah

Page 5 – ASCE Golf Tournament

Page 6 – YMG Cornhole Tourney!

Page 7 – Member News

Page 8 – MBTA Annual Meeting

Page 8 – Looking for Employment

Page 9 & 10 – Advertisements

Maine Section ASCE - Save the Date(s)

May 2025

				1	2	3
4	5	6	7	8	9	10
11	12	13	14	15	16	17
18	19	20	21	22 MBTA Annual Meeting	23	24
25	26	27	28	29 ASCE 75 th Celebration!	30	31

President's Message

Hello Maine Section:

It's hard to believe it is already May and I'm writing my last President's Message. The year has flown by, but it has been a good one for our Section and I feel like we accomplished a lot! We're not done yet though and we really, really hope to see a good showing of our members at the upcoming 75th Anniversary celebration. This is a significant milestone; we hope that many of you can attend. Please register at the link provided on Page 3.

We had a great turnout at our recent Technical Seminar. Thank you to all the presenters who provided relevant topics to engage the audience of about 60 people. The event was planned perfectly by Thomas Rioux (pictured right). Thank you to all that attended.

As I mentioned, the 75th Anniversary will be a great event for all of our members. We look forward to a great evening of networking and acknowledging what all of you have accomplished for many years. Not long after, we will host our annual Golf Tournament on June 13th at Turner Highlands. We expect a great showing with 17 teams already signed up.

As this is my last message (phew!), I'd like to thank all that my employer, S. W. Cole Engineering, does to promote and engage people with ASCE. I was hesitant to join based on the time commitment but now I understand the WHY. Our firm has a history with ASCE, with past presidents including Steve Cole, Bob Chaput and Mike St. Pierre, which I'm glad to soon be added as a past president!



For all of you reading this, I hope you push your engineers to join and be involved with ASCE. The connections I've made, the leadership training received, the interpersonal skills gained and forcing me to speak in public (which yes, I needed forcing), is invaluable. I encourage you all to keep promoting your people into ASCE, the outcome is well worth the investment.

I hope you all have a great May, and I look forward to seeing you at the 75th Anniversary later this month!

Nate Strout, P.E.

Maine Section ASCE President

Celebrate with Us!



MAINE SECTION
75th
ANNIVERSARY

Ocean Gateway

May 29th, 2025

Portland • Maine

5PM

Join the Maine Section of the American Society of Civil Engineers for an evening celebration showcasing the impact of our 75-year history.

Scan the QR Code to Register or
Email Heather Hayes for more info - hhayes@vhb.com



Celebrate with us! [Register Here](#)

THE WICKED DATA MIN"AH"

#20 CARBON "LESS" COMPOSITE WOOD



25

% less embodied carbon compared to traditional steel buildings. The composite wood market can also save 25-30% less time to build due to ability to create composite components.

Source: <https://energynews.us/2022/11/10/in-maine-mass-timber-seen-as-a-climate-solution-and-an-economic-opportunity/>



500

millions of dollars in forest exports from Maine annually.

Source: <https://woodworks.com>



2023

year Barry Mills Hall at Bowdoin, first mass timber commercial use building opened.

Source: <https://woodworks.com>



25-50

years of expected lifespan of mass-timber products.

Source: <https://woodworks.com>



40-60

feet span of typical Cross-Laminated Timber panels.

Source: <https://woodworks.com>

MAINE SECTION ASCE -- 32ND ANNUAL

SCHOLARSHIP **GOLF** TOURNAMENT

SPONSORSHIPS

- Lunch Sponsor + Team
- Golf Ball Sponsor + Team
- Hole Sponsor + Team
- Hole Sponsor
- Raffles & Prizes

FRIDAY

JUNE 13TH, 2025

**AT TURNER HIGHLANDS
GOLF COURSE**

Check-in: 7:30am

Shotgun start 9:00am

.....
\$125- Single Player
\$400 - Foursome
.....

All proceeds go to
supporting students
attending college in the
A/E/C industry!

Register today via Eventbrite or Email Heather Hayes - hhayes@vhb.com

[REGISTER HERE!](#)



MAINE SECTION YOUNGER MEMBERS **CORNHOLE TOURNAMENT**



Join your fellow young engineers for a friendly cornhole tournament! Afterward, we'll head over to the nearby Flight Deck Brewing to enjoy some food and drinks! Let us know if you have a set of boards you can bring.

Sunday 29 June 11:00 AM Start

Meet at P-3 Park in Brunswick, ME at the intersection of Admiral Fitch Ave and Pegasus St.

Please RSVP by June 25th

[RSVP HERE!](#)

Or e-mail Ben Smith at
benjamin.smith@tylin.com

ASCE YOUNGER MEMBERS

Member News

The Maine Section has learned the unfortunate news that one of our Life Members is no longer with us. Ken Recker passed away on March 6, 2025. Our condolences go out to his family, friends, and engineering colleagues.

He was inducted as a Life Member of the Maine Section ASCE in 2008. Ken was a fixture in the Maine civil engineering and geotechnical industry for 25 years. He worked at Haley & Aldrich from 1973 to 2003, moving to Maine in 1986, and then finished his career at Sebago Technics from 2003 to 2011.

Ken worked on many notable projects including the reconstruction of Route 2 in Bethel-Gilead; Maine Turnpike Rand Road Interchange in Westbrook; Maine Turnpike Jetport Interchange in Portland; Maine Turnpike Widening from York to Kennebunk including many bridge structures; and the Route 196 widening in Lewiston. Anybody that has worked in the Maine civil engineering community for any length of time likely has worked with Ken on a project. He will be sadly missed by all.

Ken was one of our more active Life Members and was a regular attendee at many monthly meetings. He attended the very first Life Member Committee planning meeting we had. He gave his time to many organizations including Maine ASCE, MathCounts, MBTA Board, MSPE Board, Falmouth Planning Board, and was the 1996 Falmouth Citizen of the Year.

His full obituary, which discusses his engineering career, can be viewed at: [kenneth-l-recker-obit](#). The Maine Section has made a donation to the Good Shepherd Food Bank in Ken's honor.



Technical Seminar Recap!

Thank you to our Sponsor, **DL Vews**, our presenters, and attendees for making the Annual Technical Seminar a huge success!




MBTA Annual Meeting

If you want to go far,
GO TOGETHER

MBTA 86th Annual Meeting

Please join us for the MBTA Annual Meeting as we celebrate 86 years advocating for a safer, more efficient transportation network in Maine.

 Hilton Garden Inn Freeport Downtown
5 Park St, Freeport, ME 04032
[View on map](#)

 May 22, 2025 03:00pm

[Register](#)

Looking for Employment



Roaring Brook Consultants, Inc.
ENGINEERING A BETTER FUTURE

Structural Engineer Support Services

A small engineering consulting firm located in South Berwick, Maine, is searching for a structural engineer/engineer intern for engineering support services. We are looking for assistance with construction engineering on temporary structure designs which include shoring and bracing systems, scaffolding layouts, lifting fixtures for heavy lifts, and tower elevators to serve the construction sites of high, medium, and low-rise building projects. We are also in need of assistance with providing structural engineering inspections for insurance companies to resolve property and liability claims for both personal and commercial policies. If you are interested in working in a small company atmosphere, have a willingness to travel for site inspections, and assist with structural drafting please email your resume to:

sales@roaringbrook.com
www.roaringbrook.com



**Maine,
We're Hiring**

powereng.com/careers



ACADIA CIVIL WORKS
ENGINEERING DESIGN & CONSULTATION

Providing Civil Engineering
Design and Consultation services
throughout Maine with a focus
on **Water Resources** and
Civil Infrastructure.

207.212.9350

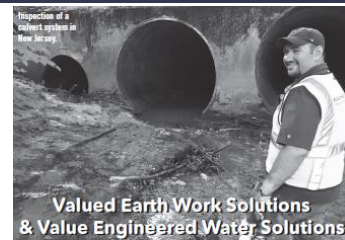
acadiacivilworks.com

jmclean@acadiacivilworks.com

SEBAGO
TECHNICS
100% EMPLOYEE OWNED

**MAKE THE WORK
YOUR REPUTATION**

→ SEBAGOTECHNICS.COM/CAREERS



- Culvert Rehabilitation projects
- Snap-Tite, CMP, Large Diameter HDPE
- Inflow & Infiltration Solutions (Cretex)
- Pro-Ring, Pipe/MH & Frame Seals
- Low Density Cellular Concrete used for geotechnical & pipe fill applications



CONTACT: Don LeBlanc, P.E.
207-892-3080
don@dlvevs.com



**GORRILL
PALMER**

An LJB Engineering Company



Services:



TRANSPORTATION



SITE DESIGN



WATER
RESOURCES



STRUCTURAL



FALL PROTECTION
SAFETY



SURVEY



TECHNOLOGY
& INNOVATION

Now Offering:

(207) 772-2515 | info@GorrillPalmer.com | GorrillPalmer.com



**R.W. Gillespie
& Associates**

- Geotechnical Engineering
- Environmental Consulting
- Materials Testing Services

Biddeford, Maine 207-286-8008

Newington, New Hampshire 603-427-0244

Mansfield, Mass. 508-623-0101

www.rwgillespie.com



SUMMIT
GEOENGINEERING SERVICES
Geotechnical Engineering & Explorations
PO Box 515, Gardiner, ME 04345
www.summitgeoeng.com

**PROUD MAINE
ASCE SPONSOR**



**INTEGRATED
OUTCOMES**
LFOD INTEGRATION SERVICES
WWW.LFOD.IO



Est. 1974
MAIN-LAND
DEVELOPMENT CONSULTANTS, INC.
Engineers, Surveyors, Scientists

Professional Land Surveying • Professional Engineering • Certified Soils Science
Wetlands Delineation • Geotechnical Engineering • Hydrogeology • Forestry

- 69 Main St, PO Box Q, Livermore Falls (207) 897-6752
- 182A Moosehead Trail, Newport www.main-landdci.com
- 367 US 1, North Building #7 1st Floor, Falmouth mainldc@main-landdci.com
Fax (207) 897-5404




Sewal
The evolution of expertise
A **ATFIC** Company



30 Park Drive
Topsham, Maine 04086
207.729.1199

2211 Congress Street, Suite 380
Portland, Maine 04102
207.883.3355

**Design with
community in mind**
stantec.com




SME
**SEVEE & MAHER
ENGINEERS**
TRUSTED EXPERTS SINCE 1985

4 Blanchard Road
P.O. Box 85A
Cumberland, ME 04021
T: 207.829.5016
info@sme-engineers.com

*Multidisciplinary
consulting engineering services*

ENVIRONMENTAL • CIVIL • GEOTECHNICAL • WATER • COMPLIANCE

sme-engineers.com



Business Cards

Do you run your own consulting firm, or have a business that the Maine engineering community should know about? Advertise with a business card! Business card listings run for 1 year, including 9 issues of the Informant and full time on the website. Cost: \$150.00 Discounts Available: Purchase a 1-year Business Card ad and receive a \$25 discount on a Job advertisement!

Advertise for new employees at any level – students, EITs, and PEs will all see your ad.

Job Listings

Job advertisements are posted in one issue of the Informant and on our Facebook page.

Cost: Quarter Page (3.75"x5") - \$35
Half Page (7.5"x5") - \$75 for 1 month
- \$500 for 1 year (9 issues)
Full Page (7.5"x10") - \$150 for 1 month
- \$1000 for 1 year (9 issues)

The deadline for submissions is the 20th of each month prior to publication.