



**ASCE**  
PHILADELPHIA SECTION

**THE**

**NEWS**

Vol 94-3

**Our 109th Year**

The Sidney Robin Memorial Newsletter of the Philadelphia Section ASCE

NOVEMBER 2021



**ASCE Vision**

Civil Engineers are global leaders building a better quality of life.



**ASCE Mission**

Provide essential value to our members and partners, advance Civil Engineering, and serve the public good.



<http://www.asce-philly.org>

National ASCE Central Number:  
1-800-548-ASCE • Toll Free.

NON OMNIA POSSUMUS OMNES (WE CANNOT ALL DO EVERYTHING)

**SECTION MEETING SCHEDULE 2021-22**

The Section Meeting program for the upcoming season is in the preparation mode and our meeting program committee is busy lining up speakers and topics for what we hope will be an interesting and informative series of meetings. The plan is to return to in-person meetings in 2022, and more details will be forthcoming on this. If we must revert to virtual, the meetings will be conducted on the same date. The information we have at this point is provided below for your planning purposes. We would suggest that you use this to mark your calendar at this time and hold the dates.

In coming issues of *THE NEWS*, this information will be "fine-tuned" to provide updates as they are available. We also suggest you visit the Section website for the latest changes in our meeting program. As we have done, each month's edition of *THE NEWS* will feature detailed information on that month's meeting along with as much information as is available for the following month's meeting, and the "look-ahead" schedule will show details that are available at that time for your advance awareness. E-mail blasts will be sent out on a regular basis to advise and remind of upcoming events and registration deadlines.

We also note the advantage of joint meetings with other societies and will schedule these as we can.

**2022**

**January 19** (Wednesday) – joint meeting with American Society of Highway Engineers, Radisson Hotel, Valley Forge; Schuylkill Banks Update and New Christian to Crescent Bridge Connection

**February** – to be determined

**March 10** – Maggiano's Center City; Delaware River Port Authority Capital Program and Projects Update

**April** – to be determined

**May** – Spring Social, to be determined

**DECEMBER MULTI-SOCIETY JOINT MEETING**

**DECEMBER 2021**

More information and details on the event will be provided in the December edition of *THE NEWS*.

**ARE YOU LIKING THE NEW LOOK...?**

With the Summer edition of *THE NEWS*, we managed to implement some probably long-needed updating for the look of *THE NEWS*, thanks to our creative director (and assembler of every edition you have seen for at least the last 25 years or more), Kathy Keiper. We admit we were probably overdue for this, but, like a lot of things, kept putting it off (as Engineers know, if it isn't broke it doesn't deserve the attention and effort to fix it). It doesn't help that, as Engineers, our aesthetics are a bit off at times, so it's a good thing we have help from folks like Kathy to keep us on track.

We would appreciate any feedback, observations, comments, suggestions, thoughts, etc. on the new look at [newseditor@asce-philly.org](mailto:newseditor@asce-philly.org). We're not necessarily "fishing" for comments (as we've already received a few "attaboys" for this...), and we promise we won't try to rope you into anything if you offer your ideas. We continue our "offer" that if you want to wait until our in-person meetings start up again to discuss this, we're certainly available for some conversation over a beer or three (assuming you'd be buying, but...).

**NOVEMBER VIRTUAL MEETING**

**THURSDAY, NOVEMBER 11, 2021**

MEETING PRESENTATION – 7:00 PM to 8:30 PM

**SUBJECT: SCHUYLKILL YARDS DEVELOPMENT**

**SPEAKERS:** Mark Celoni, PE, Regional Vice President, Pennoni; Jesse Buck, PE, Staff Engineer, Pennoni; Jessica Stefanowicz, Staff Engineer, Pennoni

**RESERVATION DEADLINE – WEDNESDAY, NOVEMBER 10.** There is no cost for ASCE members to attend this presentation. Non-ASCE members will be charged \$15. When registering, please have your ASCE ID number available. Your membership will need to be current for you to be able to register for the event as a member.

Reservations can be made through our website ([www.asce-philly.org](http://www.asce-philly.org)) and paid via PayPal or by check as applicable. Checks, made payable to "Philadelphia Section ASCE," can be mailed as instructed when you register. After you register you will receive information and instructions on how to access this meeting on your computer or device.

A partnership formed between Drexel University and Brandywine Realty Trust is starting to transform Philadelphia's skyline with the development of Schuylkill Yards. This consists of 14 acres of mixed-use interconnected parks and dynamic office, life science and lifestyle spaces, directly adjacent to the regional transportation hub at Amtrak's 30th Street Station. The presentation team will highlight the project's master plan status and the key challenges and impacts associated with a development of this magnitude in an already busy location.

**SPECIAL FEATURE – WIDENER UNIVERSITY NIGHT.** The Student Chapter of the Department of Civil Engineering of Widener University will be featured at this meeting. Students, alumni and faculty are invited to attend as well.

This presentation is eligible for one Professional Development Hour (PDH).

# PRESIDENT'S MESSAGE

Hope everyone has been enjoying this warm fall and enjoying the beautiful changing of the leaves!

Thank you to everyone who "tuned" in to our virtual October Section meeting on October 14th. **CDM Smith** did a great job presenting on the *I-95 Section BS4 and H04: Connecting Local, Regional, and Interstate Communities*.

We invite everyone to register for our November Section meeting on **November 11th**. **Pennoni** will be presenting on the *Schuylkill Yards Development*. Look for the link in our e-blast or visit our website!



As a look ahead, we will be joining in with **Engineers' Club of Philadelphia** (ECP) in December for their Multi Society meeting. As we roll into 2022 we will hold a joint January meeting with **ASHE Delaware Valley** and participate in **Engineers Week Events** in February with ECP. For our March and April Section meeting, we will be reevaluating at the beginning of the year on how we will be moving forward and hope to host in person events.

As some of you have seen in our e-blast, website and social media pages, the four ASCE Sections in Pennsylvania are looking for volunteers to help put together the **2022 ASCE Report Card**. The PA Report over the years has been used as a guidance for other states. All our past report card leads, category chairs, PR chairs and volunteers have done a great job taking their knowledge in their relative field to inform everyone the status of PA infrastructure. If you are interested in being a volunteer please reach out to our co-chairs **David DiGioia** ([ddigioia@mcmahonassociates.com](mailto:ddigioia@mcmahonassociates.com)) and **Michelle Madzellan** ([memadzellan@elagroup.com](mailto:memadzellan@elagroup.com)).

What I will end with this month's message is a topic that some of us on the board have recently joked about and I wanted to share. As Engineers we are not known for being the best at spelling. I guess that's why spell check was created, to help us Engineers when writing emails, letters or reports. Not sure how many of us are ready for an ASCE spelling bee, even though I know there would be those who would excel, but for me spelling has never been a strong suit. I would be there to watch and congratulate the winner. If you were in a spelling bee in grade school you either succeeded or missed one letter in a word you would never forget. At the end of the day, Engineers are great problem solvers and can use those skills along with technology to help make sure words are spelled correctly.

I hope everyone has a great Halloween and "see" everyone at our virtual November Section meeting!

Best,  
Briana Pampuch, PE  
President, ASCE Philadelphia Section  
[bpampuch@langan.com](mailto:bpampuch@langan.com) | 215-491-6548

## ASCE, PHILADELPHIA SECTION OFFICERS AND BOARD OF DIRECTION — 2021-22 SEASON

### PRESIDENT

Briana Pampuch, Langan Engineering & Environmental Services

### PRESIDENT ELECT

Mohamed Elghawy, Traffic Planning & Design, Inc.

### VICE PRESIDENT

Joseph Natale, DVRPC

### SECRETARY

Jesse Gormley, Pennoni

### TREASURER

Caroline "Cricket" Schreppler, Advantage Engineers

### MEMBERSHIP SECRETARY

Kevin Brown, Urban Engineers

### DIRECTORS

Scott Cepietz, Michael Baker International, 2020-22

Assunta Daprano, AECOM, 2021-23

Michael DeVuono, Arcadis, 2020-22

Daniel Gleason, PennDOT, 2021-23

Thomas Kulesher, JMT, 2020-22

Katrina Lawrence, Pennoni, 2021-23

### PAST PRESIDENTS\*

Jennifer Reigle, Pennoni

Kazi Hassan, CDM Smith

Angelo Waters, Urban Engineers

\*In accordance with our Constitution and Bylaws, only the immediate Past President will serve on the Board, and only for a *one-year term*. We show the most recent three Past Presidents as has become our tradition.

In addition, these folks will serve in appointed positions:

### ASSISTANT SECRETARY

Gregory Dunn, Michael Baker International

### ASSISTANT TREASURER

Patrick McCourt, PennDOT

### Contact Us:

#### President — Briana Pampuch, PE

Langan Engineering & Environmental Services  
2701 Kelly Road, Suite 200, Warrington, PA 18976-3565  
215-491-6548; [bpampuch@langan.com](mailto:bpampuch@langan.com)

#### Secretary — Jesse Gormley, PE

Pennoni, 1900 Market Street, Suite 300, Philadelphia, PA 19103  
215-254-7876; [jgormley@pennoni.com](mailto:jgormley@pennoni.com)

### PUBLICATIONS COMMITTEE

#### Editor of THE NEWS

Robert Wright

#### Section Outreach

Jesse Gormley, Greg Dunn

#### Staff Writers

Assunta Daprano, Lindsay Chateauvert

#### SEND COPY TO:

ASCE, c/o Urban Engineers, Inc.,  
530 Walnut Street, Philadelphia, PA 19106

# THANKS TO OUR SPONSORS

Our Section Sponsorship program is off and running once again, with 14 firms participating at this early point in the season (one new sponsor has been added since last edition). We extend our special and collective THANKS to each sponsor for their financial commitment and support.

Sponsor logos are displayed in a special Sponsors section of our website. Additionally, we provide direct links to sponsors' own websites so prospective employees can review all available and up-to-date positions. We also offer sponsors the opportunity to have a "spotlight" article in an edition of *THE NEWS* as well as service as a sponsor of one of our monthly dinner meetings.

If you have an interest in joining our sponsorship program, there's still time to be part of this season's group. Please contact **Bob Wright** at [newseditor@asce-philly.org](mailto:newseditor@asce-philly.org) for more details.

**COPY DEADLINE FOR DECEMBER 2021 ISSUE  
NOVEMBER 12, 2021**

## OCTOBER SECTION “VIRTUAL” MEETING

October 14, 2021

## I-95 Sections BS4 and HO4

By Robert Wright, Editor

Not all that long ago, we all thought we would be back at in-person meetings at the start of the current (2021-22) season. Hopefully no one bet anything on this, since, as we know, things went in a little different direction over the past several months, with the net result that we are still having to conduct virtual meetings, at least (per direction from ASCE National) for the remainder of this calendar year. While we were able to pull off an in-person Welcome Back Social in September, subject to a number of restrictions, we were not able to do the same for our first “dinner” meeting of the season. Nonetheless, despite unusually warm and nice early fall weather outside, with the only clue it was mid-October being the earlier sunset, just over 100 intrepid folks partook of the Zoom session on what’s what on an interesting design and construction segment of I-95 in lower Northeast Philadelphia.

**President Briana Pampuch** presided over her first Section meeting and went through several announcements on upcoming and planned events and thanked the Section sponsors. She introduced the **Drexel University Student Chapter**, represented by President **Emma Youngs** and Vice President **Bridget Courtney**, who provided an update on the Chapter’s current activities and events.

**President-Elect Moe Elghawy** introduced the presentation team for the session, led by members of the project team at CDM Smith, **Don Gusic**, the Project Manager for the effort, **Mike Keller**, and **Alex Eadline**. They would be assisted by **Antoinette MacIntyre** (AECOM) and **Tom Kerins** (Urban Engineers), who are part of the overall effort for construction and adjacent design/construction sections, in the Q & A portion of the session.

The team went through the history of the project development on the three different aspects of the effort, which consist of the reconstruction of Aramingo Avenue and replacement of the roadway’s bridge over Frankford Creek, the Adams Avenue extension (which includes an adjacent pedestrian/bicycle trail), and the reworking of the Betsy Ross Bridge ramps in the area to accommodate the new ramp and roadway alignments. A long list of stakeholders is overseeing and involved in design decisions on the effort and coordination with various public and private utilities, agencies, and adjacent sections of I-95 is a critical element in the project’s success.

The team noted that a design consistency/guidance document has been created for the I-95 corridor work that must be followed to make design and construction decisions simpler and facilitate future maintenance. Multiple stages and phases of maintenance and protection of traffic are required to keep traffic moving during the work and at times the construction resembled a patchwork of puzzle pieces given the different phasing of elements.

Several insightful questions were submitted through the Q & A feature of the presentation and ably handled by the presenters.

President Pampuch wrapped up the session and thanked the speakers for the information provided, and then sent the attendees “home” for the evening.

The full presentation will be made available on our webinar library on **Teachable.com**, an online platform where we will upload our recorded PDH-worthy webinars, which can be watched at one’s own pace and time to earn your PDH.

## ALSO, LOOKING TO REFER A NEW MEMBER? OR SOMEONE WHO’S NOT AN ENGINEER?

## TIME TO PAY YOUR DUES...

As a reminder, your 2022 ASCE dues is coming due at the end of the year. You should have seen the e-mail reminders on this and hard-copy invoices are being mailed.

And if you want to advise friends and colleagues of the benefits of membership, **ASCE’s Member Get A Member referral program** is a good way to refer prospective new ASCE members to our society. For each new member you refer, you can receive a \$50 Amazon.com gift card when they join. You can refer up to five colleagues at a time. More details are available at [asce.org](https://www.asce.org).

Also, please keep in mind that ASCE isn’t just for Civil Engineers. While you may be surprised to learn this, ASCE allows non-engineers to be members as well, with a specific grade of membership – the **Affiliate Member** grade – available for this purpose. While those with Civil Engineering degrees and backgrounds can usually join ASCE right out of school as **Associate Members** (and are eligible for reduced levels of dues if they have been **Student Members**), the **Affiliate Member** grade is available to anyone having “an interest in the advancement of the purposes and objectives of the Society,” as stated in the definition provided in the ASCE Register, who may not have been eligible for Student Membership and/or do not meet the criteria for Associate Membership.

Thus, the Affiliate Member grade is ideal for those who work in related fields who may have an interest in Civil Engineering but do not have a Civil Engineering degree. Affiliate Members enjoy the same benefits and perks of ASCE membership as do other member grades above Student. Additionally, you may want to let some of your colleagues and friends know about this so they can consider ASCE membership and you can get some cash for the referral.

At the other end of the “spectrum,” for those of you more senior and experienced members, the **Fellow** grade of membership is worth consideration. This is the highest level of membership one can attain on one’s own and is a laudable and esteemed achievement. The specific requirements for application for this grade of membership are listed on [asce.org](https://www.asce.org).

## SPONSORS IN THE NEWS

## TRAINING OPPORTUNITIES

**Traffic Planning & Design** will be hosting two upcoming multi-day, in-person FHWA National Highway Institute (NHI) training courses, “*Inspection and Maintenance of Ancillary Highway Structures*” and “*Safety Inspection of In-Service Bridges for Professional Engineers*.” This will be at the Conference Center in the firm’s headquarters in Pottstown. These offerings are available to the Engineering community.

More information and registration links for the two courses is here: <https://trafficpd.com/tpd/blog/in-person-national-highway-institute-nhi-trainings/>

**Inspection and Maintenance of Ancillary Highway Structures:** December 7–8

**Safety Inspection of In-Service Bridges for Professional Engineers:** January 10-14

## YOUNGER MEMBER FORUM NEWS

Mohamed Asker, Forum Editor  
 Dennis Wilson, Forum President 2021-22  
 McCormick Taylor, dewilson@mccormicktaylor.com

### PHILLIES GAME and TAILGATE September 24

The YMF Phillies Tailgate on September 24 was a wonderful night for in person networking and fun. We were able to gather safely outdoors expanding our networks and reconnecting with friends and colleagues that we hadn't seen in way too long. We enjoyed a tailgate in Lot M followed by a great game where the Phillies beat the Pirates!



### TTF WATERSHED TREE PLANTING EVENT October 9

YMF teamed up with the Tookany/Tacony-Frankford Watershed for a tree planting event.

Volunteers planted 65 trees in an easement area given by the Scattergood Foundation adjacent to the Frankford Creek. The planting effort will help reintroduce native plant species to help control erosion, improving the water quality of the Frankford Creek before it flows into the Delaware River.



### ADOPT A HIGHWAY CLEANUP EVENT October 16

On October 16, YMF teamed up with the ASCE Delaware Valley Young Members Committee to help keep the 2-mile stretch of our co-adopted roadway clean! Our combined forces of 11 participants cleaned up the roadway segment of Bethlehem Pike between Lafayette Avenue Connector and Butler Pike in Ambler/Fort Washington.



## HOLD THESE DATES

# ENGINEERS WEEK EVENTS SCHEDULED

The Engineers' Club of Philadelphia, through its Delaware Valley Engineers Week Committee, will cite Engineers Week 2022 on February 17–26. We have traditionally extended our local celebration beyond that recognized by National Engineers Week to include our kickoff event.

Engineers Week in the Delaware Valley will officially begin with the Engineers Week Opening Dinner on Thursday, February 17 (two days before National E Week begins). At this event, we will introduce and formally induct the Delaware Valley Engineer of the Year and Delaware Valley Young Engineer of the Year, as well as highlight the various contributions of engineers and engineering students. All Engineers Week award and scholarship recipients will be cited at the Dinner.

The Young Engineers Social will be conducted during Engineers Week (date to be determined). This is a networking and social event to cite the newly-inducted Delaware Valley Young Engineer of the Year.

Please note this information in your calendar and plan to participate. More details on venues and pricing will be included in future updates. It is intended to conduct these events as in-person activities and this will be subject to restrictions and guidelines on social distancing as they are in effect at the start of the new year. A decision will be made at that time and information will be provided on the events accordingly.

Please visit the Engineers' Club website, [www.engrclub.org](http://www.engrclub.org), for more information and updates.

## CALL FOR 2022 PA INFRASTRUCTURE REPORT CARD VOLUNTEERS

Category Volunteers are responsible for researching, grading and writing a Report Card category. This effort is 10 months long with an intended release date is July 2022.

The report card categories are:

Aviation	Bridges	Dams
Drinking Water	Energy	Hazardous Waste
Inland Waterways	Levees	Ports
Parks	Rail	Solid Waste
Stormwater	Transit	Wastewater

For more information and to volunteer, please email our co-chairs David DiGioia at [ddigioia@mcmahonassociates.com](mailto:ddigioia@mcmahonassociates.com) and Michelle Madzellan at [memadzellan@elagroup.com](mailto:memadzellan@elagroup.com).

YMF (continued)

### LOCAL STUDENT CHAPTERS RECOGNIZED

Congratulations to the ASCE Student Chapters at Temple University and Drexel University on their recent recognition by the Committee on Student Members for outstanding activities in 2020! The Committee on Student Members awarded each student chapter a Letter of Honorable Mention for outstanding activities as recorded on each Student Chapter's respective annual reports. This is recognition received by only the top third of all Student Organizations in ASCE!

# N-ASCE\*

## NO, YOU CAN'T RECYCLE A BOWLING BALL (BUT PEOPLE SURE KEEP TRYING)...

WHY 1,200 BALLS END UP AT NEW YORK CITY'S MAIN RECYCLING PLANT EACH YEAR

Every day, collection trucks throughout New York City arrive at Sims Municipal Recycling in Brooklyn, loaded up with old phone books and plastic sporks, metal faucets and glass bottles. It's the country's largest recycling facility of its kind, sorting more than 1,000 tons of the city's metal, glass, plastic, and paper each day on a long conveyor belt. Head into Tom Outerbridge's office at Sims, the facility's general manager, and you'll also see a few discarded bowling balls, lined up and ready to roll.

The Technicolor spheres arrive at Sims in the same plastic bags with all the soda bottles and soup cans, picked up curbside all over the city. People seem to think that because they are plastic, they are the same as, say, takeout containers. They are not. Breaking bowling balls apart and selling the individual components for scrap isn't logistically or economically feasible — and so they end up in the approximately 20 percent of material that Sims sends on to landfills.

It's not clear who exactly is throwing out all these bowling balls. Sims only takes in residential recyclables, so they're not coming in bulk from bowling alleys. And professional bowlers are too well-versed in the science (and sales pitch) behind their balls to think they're recyclable. The speculation is that the balls are pulled out of cobwebbed attics and basements throughout the five boroughs.

To an amateur bowler, a 6- to 16-pound bowling ball appears virtually indestructible, and the "house balls" filling up the racks at your local bowling alley effectively are. Since the 1970s, most have been covered in polyester, a durable plastic in everything from pillow padding to seat belts. In bowling-ball form, polyester can endure 10 or 15 years of daily play. But elite bowlers, like those on tour with the Professional Bowlers Association, want different equipment. They prefer reactive balls, which combine a different plastic called polyurethane with a liquid plasticizer that creates millions of tiny holes in the cover stock. As a ball rolls 60 feet down an oiled lane, it absorbs some of the grease, giving it a well-timed and powerful "hook" to sweep away pins.

Today, reactive balls are produced by six or seven specialty factories in the United States, Mexico, and Asia. They have weighted cores and are made of a polyester resin filled with varying amounts of calcium carbonate, barium sulfate, and glass microspheres. The cores are then encased in a half-inch urethane cover stock loaded with reactive chemicals, pigments, and, in some cases, scents, such as black cherry and orange coffee cake. The balls come off the line as perfect spheres. It's the pro shops that later drill custom finger holes.

For all that engineering, the life of a reactive bowling ball is brutally short. At a certain point, a ball can't absorb any more oil. Bowlers throw a few test runs, watch how the ball responds to the unique oil pattern on the lane, and adjust their strategy accordingly. That makes players highly sensitive to the most minute changes in their ball — and willing to dump a poor performer fast. Reactive balls are also inherently more brittle, which makes them more likely to split.

All this means that for every ball on the lane, a serious bowler has a half-dozen in a bag. But only pros, who get their bowling balls free from the brands that sponsor them, can afford to act this way. For everyone else, the average going price for a reactive ball is upwards of \$200, which means players will do just about anything, from warming ovens to ultrasonic baths, to keep them in play.

If there's a way to reuse a bowling ball, someone's tried it. Pinteresters turn them into lawn ornaments. One Reddit user claims to have used them in target practice. Pros often donate old equipment to youth leagues. But most balls end up in the trash, and more than a few make a stop at a recycling plant first. Employees pull bowling balls by hand, dropping them down a chute or piling them with other waste to be carted away to landfills. They join the ranks of other materials that seem recyclable but actually aren't, including three-ring binders, umbrellas, garden hoses, and eyeglasses.

From a recycler's perspective, bowling balls pose two problems. The first is that they're typically made of thermoset plastic, which means the bonds between its molecules are stronger than those in something like a single-use water bottle — making them difficult or impossible to be melted down and reshaped. The second is that they simply contain too many types of materials. Aluminum cans, for example, are made of (mostly) aluminum, while

bowling balls are a composite of dozens of plastics, paints, and other chemicals.

To keep the conveyor belts running, organizations like Sims have to find ways to profit off of the materials they take in, typically by finding secondary-use markets. Aluminum cans can be cleaned, sorted, crushed, and resold to manufacturers who shred, remelt, and solidify the material into new containers. But many materials never find a second life. Like bowling balls.

Of course, there are other end-of-life solutions for a bowling ball. Neil Stremmel, the former head of research for the United States Bowling Congress, the national governing body for the sport, says he's heard of more than one bowler who has gone so far as to throw a bad ball off a bridge after a tournament.

Thanks to *One Great Story* for this information.

\*N-ASCE – not always something concerning Engineering...

## SECTION AGENCY PARTNERSHIP PROGRAM

As you may be aware, our Section offers a [Section Sponsorship Program](#) to allow firms to help provide our various activities and programs for our membership and the Civil Engineering community in the Philadelphia area. This involves a financial commitment which is reflected in the placement of the participant's logo and business card in *THE NEWS* and on the Section's website, along with several other benefits.

Additionally, last season we began our informal recognition of government and quasi-government agencies for the assistance they have provided us, through volunteer assistance and award recognition among other things. Our Agency Partners' logos are shown below.





## MEMBERS IN THE NEWS

# Griffin Joins HKA as Partner and U.S. Head of Forensic Technical Services

HKA announced today that **Michael V. Griffin** has joined the firm as Partner and U.S. Head of Forensic Technical Services (FTS), based out of the Philadelphia office.

HKA has global FTS resources with more than 400 technical subject-matter experts encompassing a wider range of specialist disciplines including architecture, engineering, science, project management and other technical disciplines. Griffin's mission will be to grow HKA's FTS group within the U.S. market as a multi-disciplinary team providing expert witness and expert advisory services across any type of dispute.

Mike is a Civil Engineer and proven industry leader with extensive experience in construction claims and forensic technical services. His expertise in the planning, design, and construction of major transportation, building, and heavy civil construction projects has helped him deliver a variety of technically complex facilities and projects. His assignments have included the Comcast Center, the Pennsylvania Convention Center, various public buildings, and numerous transportation projects for such notable clients as the City of Philadelphia, Pennsylvania Department of Transportation, New Jersey Turnpike Authority, Delaware River Joint Toll Bridge Commission, New Jersey Transit, and Federal Transportation Administration.

Mike earned his Bachelors and Masters degrees in Civil Engineering from Villanova University and his MBA in Finance from La Salle University. He is a registered Professional Engineer (PE) in PA, NJ, NY and MD. Prior to joining HKA, he was President of Hill International's Project Management Group (Americas).

We wish Mike good luck in his new endeavor.

## REGION 2 IN THE NEWS

The ASCE Region 2 Nominating Committee is seeking candidates to fill **three open positions**, one for Region 2 Director, and two for Region 2 Governor.

Candidates for the vacant **Region 2 Governor** positions shall be a Society member in good standing from any Section in Region 2 except the Philadelphia Section, have served as a Section or Branch officer, as a member of a Section or Branch committee, or as a member of a Standing Board or Society committee.

Candidates for **Region 2 Director** shall be a Society member in good

## SECTION COMMITTEES

Our Section runs very well and it is mainly a result of the dedication and service of our many volunteers, both our Officers and Board Members as well as our various Committees. While many of you know the former group well, you may not be all that aware of the latter. Our Committees address many of our regular and ongoing issues and keep our Section vibrant and in the forefront of service to our membership. A list of our Committees and chairs for this season is provided below. We would like to thank these folks and their helpers for their contributions and diligence in helping our Section do what it does.

Additionally, if you have a particular interest in helping the Section as a Committee volunteer, please reach out to us at [info@asce-philly.org](mailto:info@asce-philly.org) or through our **Section Secretary, Jesse Gormley** (contact information is provided on page 2).

ASCE Brochure – *Katrina Lawrence*

ASCE National Conference (2026) – *Chris Menna*

Audit – *Joe Natale*

Awards – *Bob Wright*

Budget and Finance – *Cricket Schreppler*

College Scholarship – *Scott Cepietz*

Communications – *Jesse Gormley*

Continuing Education – *Joe Natale*

Diversity, Equity and Inclusion – *Assunta Daprano*

History and Heritage – *Joe Natale*

Humphrey Fund – *John Zarsky*

Membership – *Kevin Brown*

Mural – *Angelo Waters*

Nominating (for Board Positions) – *Briana Pampuch*

Program – *Moe Elghawy*

Registration and Payment – *Mike DeVuono*

Society Relations – *Cathy Farrell*

Spring Social Committee – *Troy Illig*

Subsidiary Groups – *Joe Natale*

Construction Management – *Bob Wright*

Delaware Valley Geolnstitute – *Russ Preuss*

Environmental and Water Resources – *Eric Lindhult*

Structural Engineering Institute – *James Greco*

Transportation & Development Institute – *Bill Thomsen*

Utility Engineering and Surveying Institute – *Nha Truong*

Younger Member Forum – *Dennis Wilson*

standing, have an Address of Record within Region 2, and shall have served as a Region 2 Governor.

Region Governors and Directors serve a term of three (3) years.

If you have an interest in these positions (and keep in mind the Governor spots are not open to our Section this time around), please contact **Joe Platt** ([jplatt@trafficpd.com](mailto:jplatt@trafficpd.com)) for the position duties and expectations as well as submission requirements, templates and schedule. Submission packages are due by December 1.



**CDM Smith**  
cdmsmith.com

**HARRISBURG**  
3605 Vartan Way,  
Suite 202  
Harrisburg, PA 17110  
1.717.541.4001

**WAYNE**  
993 Old Eagle School Road,  
Suite 408  
Wayne, PA 19087  
1.610.293.0450

**PHILADELPHIA**  
Two Penn Center Plaza,  
1500 JFK Boulevard,  
Suite 1208  
Philadelphia, PA 19102  
1.215.636.0600



**DREXEL UNIVERSITY**  
College of  
**Engineering**  
Civil, Architectural and Environmental Engineering



**Colliers** Engineering  
& Design

A multi-disciplined  
A/E/C firm serving the  
Delaware Valley  
since 1989



**TPD** TRAFFIC PLANNING  
AND DESIGN, INC.  
www.TrafficPD.com



Moving  
Forward  
Together®

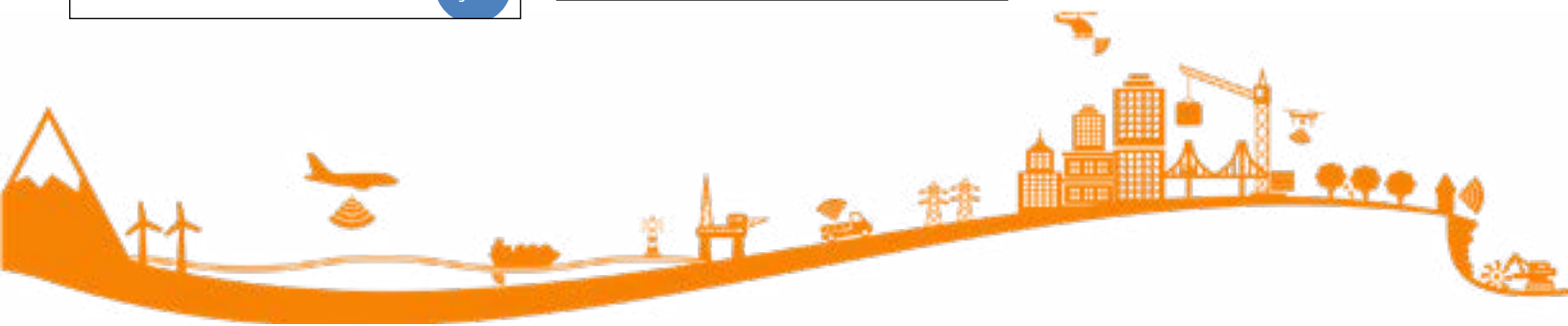


**McMAHON**  
mcmahonassociates.com  
1515 Market Street, Suite 1360  
Philadelphia, PA 19102  
215-433-1660



**HNTB** The HNTB Companies  
Infrastructure Solutions  
www.hntb.com

Allentown | Harrisburg | King of Prussia  
Philadelphia | Pittsburgh




**URBAN ENGINEERS**  
urbanengineers.com  
215.922.8080



**Pennonni** SMART SOLUTIONS  
Applying today's innovations to  
make tomorrow's world smarter.



**YQS**  
Your Quality Solutions

Contact Us!  
JCSalas@YourQualitySolutions.com  
717-468-2754  
www.YourQualitySolutions.com

PWD Certified #112277  
WBE #14035  
DBE #112277  
PennDOT pre-qualified for NAICS 238120

YQS's goal is to provide our clients with outstanding service and preserve clean water and soil for the future. Schedule your **CCTV Video Pipe Inspection** to inspect for clogs, damaged areas, and defects with us today!



**AERO** AGGREGATES  
Ultra-Lightweight Aggregate  
Made from 100% Post-Consumer Glass



**JBC**  
ASSOCIATES, INC.

Integrated Engineering and  
Environmental Solutions



**LANGAN**  
215.491.6500 www.langan.com



**VILLANOVA UNIVERSITY**  
COLLEGE OF ENGINEERING

**VILLANOVA URBAN  
STORMWATER PARTNERSHIP**

Advancing the evolving field of sustainable stormwater management and fostering the development of public and private partnerships through research.

**BECOME A MEMBER**

www.villanova.edu/vusp



**Michael Baker**  
INTERNATIONAL

**YOUR CARD  
CAN BE HERE!**

CONTACT US AT  
[newseditor@asce-philly.org](mailto:newseditor@asce-philly.org)  
FOR DETAILS