



In This Issue:

Sexual Harassment Prevention Training

President’s Message

Calendar & Upcoming Events

The Blackhawk Hotel

2021 Board of Directors

President

Sara Somsky, P.E.
Terracon, Inc.
(563) 468-4288
Sara.Somsky@terracon.com

Vice President

Jay Brady, P.E.
Stanley Consultants, Inc.
(563) 264-6322
bradyjay@stanleygroup.com

Treasurer

Blair McDonald, P.E., L.S.
WIU-QC School of Engineering
(309) 762-3999
b-mcdonald2@wiu.edu

Secretary

Christian R. Cooper, P.E., CPESC.
MSA Professional Services
(563) 424-3696
ccooper@msa-ps.com

Past President

Amanda Patterson, P.E.
US Army Corps of Engineers
(309) 794-5350
Amanda.N.Patterson@usace.army.mil

Illinois mandated Sexual Harassment Prevention Training

In 2019 Illinois passed a law that mandated individuals with licenses issued by the Department of Professional Regulation that require continuing education to also complete 1 hours of continuing education on the topic of sexual harassment prevention training. The requirement was in effect for all renewals after January 1, 2020. This continuing education requirement was intended to be included in the number of hours already required under the individual acts and rules and did not increase the number of hours required to renew a license.

Originally, the training was required to be provided by any continuing education provider that is authorized to provide continuing education for any profession regulated by the Illinois Department of Financial and Professional Regulation.

This requirement was amended by Public Act 101-0221 that required Illinois Employers to provide annual sexual harassment training. The employer may develop their own training program, provided the training met or exceeded the minimum standards that are outlined in the act. Employers could use the Illinois Department of Human Rights model program to supplement any existing training program.

Currently, this how this training is intended to operate in Illinois.

Just after planning for this Quad Cities ASCE training began, deliberations began to soften this requirement. Currently, there is a bill (one of about 640) waiting for Governor Pritzker’s signature that softens these training requirements. Basically, any employer sponsored training for sexual harassment prevention is considered acceptable. At this time, the bill is not signed so it is currently not law. But our intent is to be open and forthright with our membership,

The Quad Cities Chapter of the American Society of Civil Engineers worked with the Illinois Society of Professional Engineers (ISPE) to bring interested parties the State of Illinois Training for a reduced fee of \$40 for any non-member of ISPE. If you are a member of ISPE, this training is free. This training is the original model developed for the Illinois Department of Financial and Professional Regulation.

The presentation of this training is somewhat on the honor system. It is requested that all viewers pay for the training. If there are multiple viewers per monitor, these should be reported and paid for.

This training will be provided July 21, 2021 from 12 noon to 1:00 PM.

Registration information will be sent via e-mail.

President's Message

I hope you had a great Independence Day. If I were to ask you what great feats have Civil Engineers accomplished in the USA's 245 years, what comes to mind? Civil Engineers are involved in every aspect of our lives, from traveling safely to and from work, to safe drinking water and indoor plumbing, from erecting the tallest skyscrapers to maintaining America's waterways, and so much more. Below is a list of some of the great civil engineering accomplishments I've had the pleasure of experiencing in person.

Interstate Highway System, USA: Nothing showcases the wonder of the American Interstate Highway System better than I-80. Spanning 11 states in total, it starts with a crossing of the Bay Bridge in San Francisco, crosses the Bonneville Salt Flats near the Great Salt Lake, reaches 8,000 feet above sea level in Wyoming, and has a 72-mile stretch—the longest of all interstates—of virtually straight run outside of Lincoln, Nebraska, and terminates four miles shy of New York City.

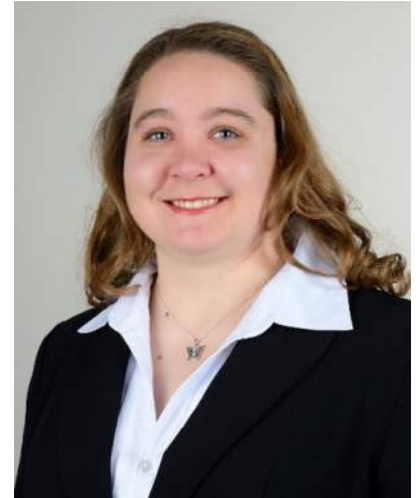
Sears Tower, Chicago: The Sears Tower, now known as the Willis Tower, is a 110-story, 1,450-foot-tall structure and was opened in 1973 as the tallest building in the world. The Sears Tower was the world's tallest until 1998.

Gateway Arch, St. Louis: Constructed in 1965 with less than half a millimeter of error allowed, the Gateway arch is a 630-foot tall, 630-foot wide (at the base) arch which reflects St. Louis' contribution to the westward expansion during the 19th century.

Erie Canal, New York: In 1825, construction workers finished up the 363-mile-long Erie Canal, which connects the Atlantic Ocean with the Great Lakes. To create the channel, engineers needed to use gunpowder for blasting—there was no dynamite yet—and create cement capable of setting underwater.

Golden Gate Bridge, San Francisco: In 1937, the world's tallest and longest suspension bridge was opened. Joseph Strauss design required thousands of hand calculations of every rivet and mooring location – can you imagine being on that engineering team???

Additional engineering feats can be found here: www.popularmechanics.com/technology/infrastructure/g35589790



Calendar and Upcoming Events

The Quad City Section leadership is working on a full slate of section meetings and tours to advance our members and the profession. The following Section calendar indicates activities currently in planning.

Date	Time	Topic	Speaker	Location
July 21, 2021	12 Noon to 1:00 PM	IL required Sexual Harassment Prevention Training	NSPE - IL	Virtual
July 23, 2021	6:30 PM	Quad City River Bandits vs. Peoria Chiefs	N/A	Modern Woodman Park
Aug. 3, 2021	5:30 to 6:30 PM	West Lake County Park Pond Rehabilitation	Roger Kean	Lake View Shelter – Entrance #1 (I.e. located next to beach)
Aug. 18, 2021	12 Noon to 1:00 PM	Waterproofing Concrete with Cyrstals	Alcmeo	Virtual
Sept. 2021	TBD	The New I-74 Bridge	TBD	Potentially on-site
Nov. 17, 2021	12 Noon to 1:00 PM	Lightweight Concrete	Mark Salvatore	QC Branch of Western Illinois University

We need your help! Please send us your ideas for upcoming presentations and/or tours - contact any of our officers.

In order to reduce expenses, the Quad City Section sends its newsletters in electronic format only. If you are aware of a fellow Quad City Section Member that does not receive the newsletter, it means that ASCE National does not have their email address. To receive the newsletter, members must keep their email information current by contacting ASCE at 800.548.2723 or by visiting the Members Only section of the ASCE website at <http://www.asce.org/membersonly>. The Quad City Section does not sell email information to anyone. ASCE's Privacy Statement is available on the ASCE website.

The Blackhawk Hotel

The Blackhawk hotel is synonymous with luxury from another era.

The first seven stories of the Black Hawk Hotel were constructed in 1915. The remaining stories, eight through eleven, were constructed in 1920. Over the next 20 years, the Blackhawk chain of hotels grow as similar luxury hotels were constructed in Mason City (IA), Des Moines, and St. Paul (MN). In 1929, the President of the Black Hawk Hotel, Mr. Dick Lane, stated "It is the policy of the Black Hawk Hotels to place the pleasure of our guests above all other considerations. We feel that a hotel is something more than mere a place in which to sleep. It should be a place where those who wish to entertain are proud to bring their guests." At that time, rates for one room for an evening were \$2.25 per night. Monthly rates were advertised as \$72.

The building was designed by the Davenport architectural firm of Temple & Burrows. This firm designed some of Davenport's most iconic buildings. These include the Scott County Jail, the Music Hall, the Chapel and the Library at the Immaculate Conception Academy, the Davenport Hotel, The Union Arcade Building, the Burlington Apartments, the Halligan Coffee Company building, and Landmark Apartments.

Parke Tunis Burrows was born in Davenport. He received his B. S from the University of Illinois. He worked for three years in Chicago before coming back to Davenport to partner with Frederick Clausen in the Clausen & Burrows Architectural Firm.

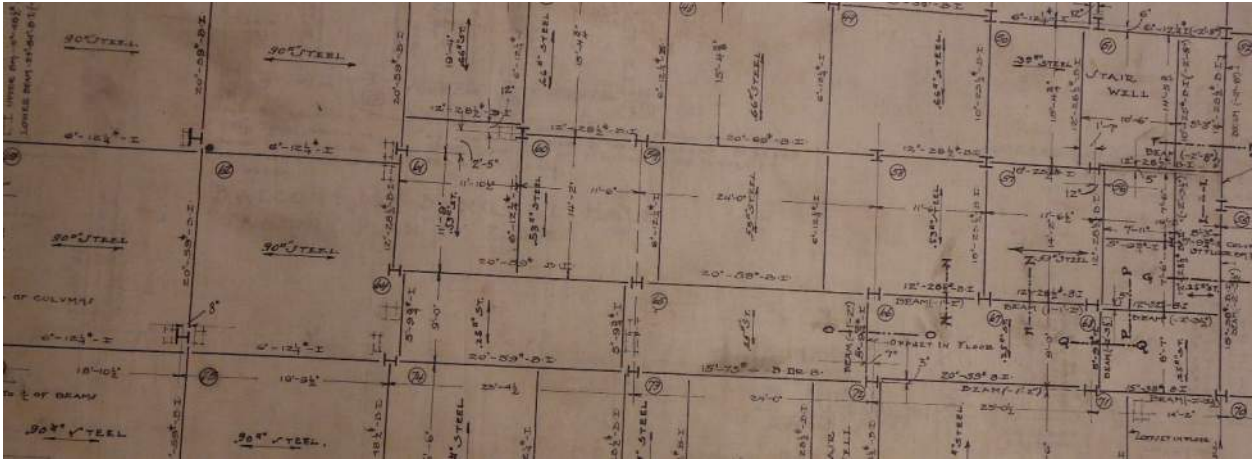


INTERIOR
HOTEL BLACKHAWK.
DAVENPORT, IOWA.

Seth Justin Temple was born in Winona, Minnesota. He received his Ph.D. in architecture from Columbia University. He briefly taught at the Metropolitan Museum of New York. He participated in further architectural studies in Rome and Paris before returning to teach at the University of Illinois. He then joined the firm of Clausen and Burrows, where it soon transformed into Temple and Burrows.

TEMPLE AND BURROWS. ARCHITECTS.	
62, 63, McMANUS BUILDING. DAVENPORT, IOWA	
ORDER NUMBER.	BUILDING. HOTEL
357	OWNER: BLACK HAWK HOTEL CO
DRAWING NUMBER.	DRAWING: ROOF PLAN & COL. SCHEDULE
7.	SCALE: $\frac{1}{8}$ "-1'-0" DATE: -12-24-13.
ARTHUR. H. EBELING. SUPERINTENDENT.	

The Hotel Blackhawk is the 9th tallest building in the Quad Cities area at a height of 140 feet. It has been listed in the National Register of Historic Places since 1983. Notables such as Barack Obama, Herbert Hoover, Richard Nixon, Carl Sandburg, and Jack Dempsey, have all stayed at the Hotel Blackhawk.



The building has a steel frame constructed from Bethlehem Steel I Beams and girders. The structure of each floor is reinforced concrete that spans from beam to beam. In the column schedule, the columns are listed as Bethlehem H sections. I assumed these were steel pile sections. However, the plan notes indicate they are to be standard Bethlehem I sections. As was common back then, all the steel joints are riveted joints. Of particular interest is the special elevation notes provide for the beams that support the roof (i.e. sidewalk) of the coal storage area.

The plans are archived at the Davenport Library. What I found to be missing in the archived plans is the foundation plan for this building. I do not know if the foundation design was the responsibility of Temple & Burrows or if another party. Better minds than mine may know if caissons, end-bearing piles, or spread footings were utilized. If someone out there knows or knows how to find out, please share this information.