

April 2021

ASCE SEATTLE
APRIL JOINT MEETING WITH SEAW:

**EARTHQUAKES IN
WESTERN WASHINGTON:
HISTORY & RISK**

JOIN US VIRTUALLY ON ZOOM
WEDNESDAY, APRIL 14
5:30PM - 7:00PM



**Earthquakes in Western Washington:
History & Risk**

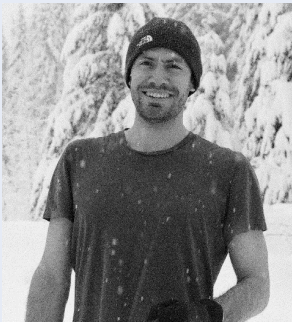
Speaker: Brian Sherrod, Project Chief and Pacific Northwest Regional Coordinator for the USGS Earthquake Hazards Program

Abstract: Research on past earthquakes shows that at least 28 large earthquakes struck the Fraser-Puget Lowland over the last 16,000 years on 13 fault zones, including five reverse faults zones (Olympia, Tacoma, Seattle, Bellingham, and Boulder Creek fault zones), and four oblique fault zones (Leech River, Canyon River-Saddle Mountain, Southern Whidbey Island, Darrington-Devil's Mountain, north Olympic fault zones). Understanding the locations of active faults, and the general history of activity, is an important aspect of most civil engineering projects.

[Click Here to
Register & Add
to Calendar](#)

Date: Wednesday, April 14
Time: 5:30pm-7:00pm

*After registering, you will
receive a confirmation
email containing
information about joining
the meeting via Zoom.*



April President's Column

By Javier Homero Flores Cervantes, PhD, PE
ASCE Seattle Section President

Seattle Section,

I wish this spring season finds you well and that you are staying safe as we navigate this pandemic. This month I would like to write to you about how you can engage our local, state and national government leaders through ASCE. ASCE is an organization that is apolitical, but being apolitical does not mean being disengaged.

Section Officers
Contact

Newsletter Editor
Contact

At the **national level** ASCE has an [advocacy group](#) that runs several programs that allow you to learn about how to contact all levels of government, and connect with your elected officials. Some of these programs include: the Key Contact program, the Infrastructure Report Card, and the Fly-In.

The [Legislative Fly-In](#) is a very popular annual event where you fly-in to Washington DC to learn how to lobby your federal representatives, and talk directly to them or their staff during a two-day stay. This year it was held online due to the pandemic.

Upcoming Events
Calendar

Recent Board
Meeting Minutes

Current Job Board
Openings

Advertise in the
Newsletter

Post a Job
Opportunity

Younger Members
Forum

May 2021
NEWSLETTER
CONTENT DEADLINE:
April 20, 2020

Hopefully next year it will be in person again. Our Section sponsors one person per year, but more people can go if they can finance their travel.

To be eligible to participate in the Fly-In, you need to be a [Key Contact](#). A Key Contact is an ASCE member who is interested in public policy and engaging with local elected officials. As a Key Contact you will receive emails about public policy developments that need membership action. You need to be a US citizen to participate in this program. You can find more information about this, and sign up, at this [link](#).

ASCE also produces a [National Report Card](#) every four years to assess the status of the infrastructure in the country. The latest report card was released this past March 3rd. The goal is to bring attention to our leaders and the general public about the conditions and needs of the country's civil infrastructure. It is a great tool to communicate with other entities about the state of civil infrastructure, of which people outside of the profession are often unaware.

Shifting gears to the **local level**, we have a [legislative committee](#) that is in charge of all of the Section's government relations. Also, like the national level, the Seattle Section is proud to produce a [State of Washington Report Card](#). The last release is from January 2019. We will be starting a new report card in the not so distant future. This effort requires the collaboration of several Section members and we need your participation!

The Section is also part of the Architect and Engineers Legislative Council, or AELC, which was formed over three decades ago in order to lobby on our behalf in the State Legislature, in Olympia. Currently the council meets weekly. Unfortunately, we don't have anyone representing us at the council at the moment. We would love to hear from you if you are interested!

As you can see, there are many opportunities for government relations involvement, and we need the engagement of the Section members. [Contact us](#) if you are curious. There are different degrees of commitment, and many different ways to participate. If we don't engage, our valuable input is not a part of the conversation. This is an opportunity to have your voice heard.

This month we have an amazing [virtual dinner talk about active faults in Washington State](#), sponsored together with the Structural Engineers Association of Washington (SEAW). Brian Sherrod of the USGS Earthquake Hazards Program will be talking about the relevance of these faults for civil engineering projects.

Have a great April!

Are you considering becoming an ASCE **Member**? Each month we'll be highlighting a unique benefit of membership.

Member Benefit: Special Member Rates on ASCE's Civil Engineering Salary Report and Data Tools. Members enjoy five free data uses, plus \$200 savings on 20 additional data uses and \$300 savings on the unlimited Salary Report Bundle. ASCE annually launches a Civil Engineering Salaries report, which provides a detailed analysis of what civil engineers are actually paid in the U.S. Find out if you are getting paid what you're worth, or paying what's needed to attract top talent to your business. This product also includes a Salary Calculator. asce.org/salaries

[Join ASCE Today!](#)

ASCE has been bringing the global civil engineering community together since 1852. With more than 150,000 members across 177 countries, ASCE gives you access to everything you need to move your career forward faster. [To learn about all the great Member Benefits, check out this guide!](#)

Calling All Students! Scholarships Available!

DUE THIS SATURDAY - SEATTLE YMF SCHOLARSHIP!

Are you a student or do you have a student in your life? Then you should take a look at ASCE Seattle's THREE open scholarship opportunities! Historically, ASCE Seattle has not received many applications for these scholarships - and we want that to change! Don't let this opportunity slip by you - applications won't take you long and, if you meet the requirements, your chances of being awarded funds are high! [Visit our Scholarship Page](#) to learn more and download the application forms.



ASCE SEATTLE SCHOLARSHIPS!

SEATTLE YMF SCHOLARSHIP

DUE APRIL 3, 2021 (\$1,000!)

R.H. THOMSON SCHOLARSHIP

DUE APRIL 25, 2021 (\$5,000!)

RICHARD WILLIAMSON JONES MEMORIAL SCHOLARSHIP

DUE JUNE 25, 2021 (\$2,000!)

Engineers Week Pacific Science Center Donation

Thank you to engineers for the work that they do!

To celebrate Engineers Week earlier this month, we asked for donations to support Pacific Science Center's K-12 STEM program. With Seattle Section matching donations, we were at \$340. The board voted to bump that up to \$1000! Thank you for your continued support to make this donation possible!

PACIFIC
SCIENCE
CENTER



March Committee Meetings & Events

EWRI Committee Meeting

Thursday, April 15 @ 12:00pm

Topic: Using AR, VR, and innovative stormwater features at the Georgetown Wet Weather Treatment Station

Contact seattleascewre@gmail.com if you are interested in being added to the Seattle Section EWRI mailing list to make sure you receive future EWRI meeting notices!

Speaker

Brian Shuck, Jacobs

Diversity, Equity + Inclusion Committee Meeting

Tuesday, April 20 @ 5:00pm

If you are interested in joining ASCE Seattle's DEI Committee or attending their monthly virtual meetings, reach out to [Diversity Chair, Joshua Shin](#).

The DEI meets regularly on the third Tuesday of every month.

Check out their highlight of Autism Awareness Month below!

Diversity, Equity + Inclusion Monthly

The DEI Committee is kicking off a monthly share-out regarding relevant topics for the month at hand, beginning with:

April: Autism Awareness Month

April is Autism Awareness month, and the ASCE Seattle chapter would like to celebrate and acknowledge some of the work our industry has done to help aid individuals with Autism:

An architect and professor at the University of Michigan experiments with a sensory theater experience for children with ASD to provide them with a more engaging way of interacting with the world around them. This piece has been in some museums and public places. The architect hopes to inspire this type of design for future projects within the built environment.



Read more here: <https://www.archdaily.com/tag/architecture-for-autism>



Rutgers CAIT (Center for Advanced Infrastructure and Transportation) lab received a grant to understand the needs of New Jersey's transit system to aid individuals with ASD (Autism Spectrum Disorder).

Read more here: <https://cait.rutgers.edu/autism-project/>



An airport in the southwest region of Ireland has created a "sensory room" for people with neurodevelopment challenges, such as Autism. Because the airport is a very over-stimulating place, these spaces provide refuge and a soothing place to make the airport experience less stressful and ideally more manageable for those who are neurodiverse.

Read more here: <https://www.chicagotribune.com/travel/ct-quiet-rooms-for-autistic-children-popping-up-at-airports-20170412-story.html>

If you are interested in learning more about neurodiversity and creating spaces for those who are neurodiverse, explore the following resources:

- The Neurodiversity Hub's site on creating [Enabling Spaces](#)
- The definition of [neurotypical versus neurodiverse](#).
- This recorded webinar on [working with neurodiversity](#).

Some [notable people](#) with ASD include: Bill Gates, Alan Turing, Nikola Tesla, Albert Einstein, Emily Dickson, Jerry Seinfeld, and Tim Burton.

If you would like to get involved with the DEI committee, please email diversity@seattleasce.org.

Professional Engineering Education Survey

Preparing students with the necessary skills for a successful transition into their professional careers is a crucial part of the undergraduate program. The following survey is being conducted by a group of researchers at Washington State University (WSU) and Virginia Tech (VT) is aimed at identifying these important skills to help improve the alignment of learning outcomes of university programs with modern engineering practice.

To assist in this research effort, the team is asking that you please complete this **10-15 minute** survey. If you choose to participate in the study, please click the link below to access the survey.

Survey Link: [Professional Engineering Education Survey](#)

Thank you for your time,

Adam Phillips
Assistant Professor
Department of Civil & Environmental Engineering, WSU
a.phillips@wsu.edu



Congratulations LOCEA Winners!

The LOCEA Awards recognize projects that have improved the quality of life and contributed to the economic development of the local community, area, or region. These projects represent the successful combination of multiple engineering objectives, including design innovation and excellence,

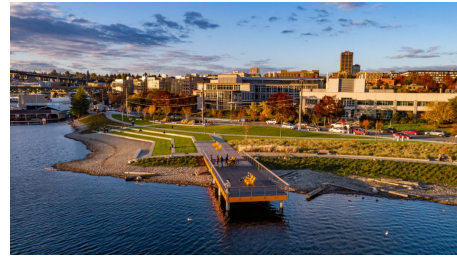
environmental sustainability, cost effectiveness, the effective use of materials, and aesthetics.

At the March ASCE Seattle Dinner Meeting we heard excellent presentations about the winning projects, which are:

Fritz Hedges Waterway Park

Water Resources

- **Owner:** City of Seattle - Seattle Parks and Recreation
- **Team:** Osborn Consulting; Walker | Macy; KPFF; Maul Foster Alongi; Tres West Engineers; Merit Engineering; Design Two Four / Two Six; dark | light; Grette Associates
- **Summary:** The Portage Bay waterfront was transformed into the beautiful new Fritz Hedges Waterway Park by Seattle Parks and Recreation (SPR), a multi-year project completed in fall of 2020. The new 3.5-acre park makes creative use of the compact area which has seen many uses throughout its history. The final project delivers a much-needed green space to the surrounding community, improves the local habitat for salmon, and turns this once inaccessible waterfront into a beautiful public space.



Mukilteo Ferry Terminal

Ports and Waterways

- **Owner:** WSDOT / WSF
- **Team:** KPFF; LMN Architects; Jacobs Engineering
- **Summary:** The Mukilteo Ferry Terminal is WSF's first new terminal in 40 years. It was designed to honor the history of local Native American tribes with a building inspired by a traditional longhouse and by incorporating substantial innovative sustainable elements. The new terminal addresses safety issues at the old site and will allow WSF to meet significant increases in future ridership.



NE Spring Boulevard

Transportation and Development

- **Owner:** City of Bellevue
- **Team:** HDR, GeoEngineers; Lin & Associates; Ott Sakai; KPFF; PanGEO; Pacific Rim Environmental; Dickson Company; Johansen Excavating; Tran Tech; Krazen & Associates; Mayes Testing Engineers; KLB Construction; Interwest Construction, Inc.
- **Summary:** The BelRed subarea of Bellevue, Washington, is transforming into a state-of-the-art, mixed-use and transit-oriented neighborhood. Its backbone is the new NE Spring Boulevard, a one-of-a-kind urban gateway with four travel lanes, five intersections, two bridges, a multipurpose pathway, cycle tracks, and parking and drop-off zones. As the first ground-up designed multimodal corridor in Bellevue, this project used complete streets to improve mobility for people who walk, bike, drive or take transit. A blueprint for planned segments and corridors around the state, the design leans on a high level of detailing and material use to intuitively delineate space. The team overcame significant hurdles, including remediating a former industrial area and weathering a global pandemic to continue construction. Completed on time and on budget, the new NE Spring Boulevard is poised to serve the neighborhood with multimodal amenities and regional connections.



SR 203 Loutsis Creek Fish Passage

Structures

- **Owner:** WSDOT
- **Team:** WSDOT, Goodfellow Bros., Advanced Infrastructure Technologies (AIT)
- **Summary:** This project used an innovative composite arch structure to remove a fish barrier where SR 203 crosses Loutsis Creek south of Duvall. A five-foot diameter concrete pipe was replaced with a 50-foot-wide arch, giving access to 3.1 miles of upstream habitat and new spawning grounds for Coho salmon, steelhead and other species. This was the first time the composite arch bridge was used on the West Coast. It provided an elegant structural solution that was constructed more quickly and at a lower cost than other alternatives.



Thank you to everyone who took the time to nominate a project for a LOCEA award this year! Region 8 awards are next!

Upcoming Volunteer Opportunities

YMF Conference Coordinators

The Seattle YMF is looking for Conference Chairs! Every year, the Multi-Regional Leadership Conference (MRLC) is held throughout ASCE's Region 8 & 9, which includes the Western Regional Younger Member Council (WRYMC) and the Workshop for Student Chapter Leaders (WSCL).

The Seattle YMF is working towards putting a bid to host the MRLC in Seattle in 2024! While it may seem early, we are looking for Conference Chairs to organize and plan the conference events!



Please reach out to ymf@settleasce.org, BobbieGilmour@kennedyjenks.com, or MackenzieCapaci@kennedyjenks.com

2021-2022 ASCE Seattle Board Nominations

Members - stay tuned for information regarding your nominees for the 2021-2021 ASCE Seattle Board! More information will be included in the May newsletter.

2021 ASCE PNW Student Conference

The University of Washington ASCE Student Chapter will be hosting the 2021 Pacific Northwest ASCE Student Conference. This year's student conference will be held online and will take place from **April 15th to 17th, 2021**. The competitions taking place will include Concrete Canoe, Water Treatment (Environmental), UESI Surveying, Sustainable Solutions, Technical Paper (Daniel W. Mead), and Timber-Strong Design Build (TSDB).

To find more information about the conference, [please check out our website here.](#)

Lastly, we would like to recognize our amazing sponsors for their generous donations. Thank you so much for helping to support the next generation of Civil Engineers!

The University of Washington Chapter is proud to be hosting this year and wishes everyone the best of luck!

2021 ASCE PACIFIC NORTHWEST STUDENT CONFERENCE

APRIL 15TH-17TH, 2021

COMPETITIONS

Concrete Canoe
Water Treatment (Environmental)
UESI Surveying
Sustainable Solutions
Technical Paper (Daniel W. Mead)
Timber-Strong Design Build (TSDB)

More information and
updates at:
[https://studentconferences.
asce.org/pnw/](https://studentconferences.asce.org/pnw/)



Or contact us at
asce@uw.edu

THANK YOU TO ALL OUR SPONSORS!



AND TO ALL OUR DONORS!

**David Peden, Pratistha Kansakar, Romulos Ragudos, Theodore Hanson,
Henry Haselton, Dawson Stoops, Ari Asarch, and our anonymous donor.**

Branch & Committee Volunteer Needs

North Branch Board & YMF

The North Branch is currently looking for motivated individuals to be part of the North Branch Board starting from October 2020 until September 2021. We have the officer positions of **President, Vice President, and Secretary/Treasurer** open. The North Branch serves approximately 150 members in the counties of Whatcom, Skagit, San Juan, Island and Snohomish.

The 2020-2021 North Branch Board will help grow the Branch through member engagement and providing value to its members through events and communications such as membership meetings, email newsletters, and other means which the North Branch Board envisions as paths for growth to continue the momentum for the established Branch. The leadership positions will include the full support from the Seattle Section Board and its resources, leadership training opportunities for the new officers, and Society (ASCE National) level resources and contacts. Prior experience in ASCE leadership

positions is not required. Please contact Tony Nguyen, Director of Branches, at branches@seattleasce.org for more information.

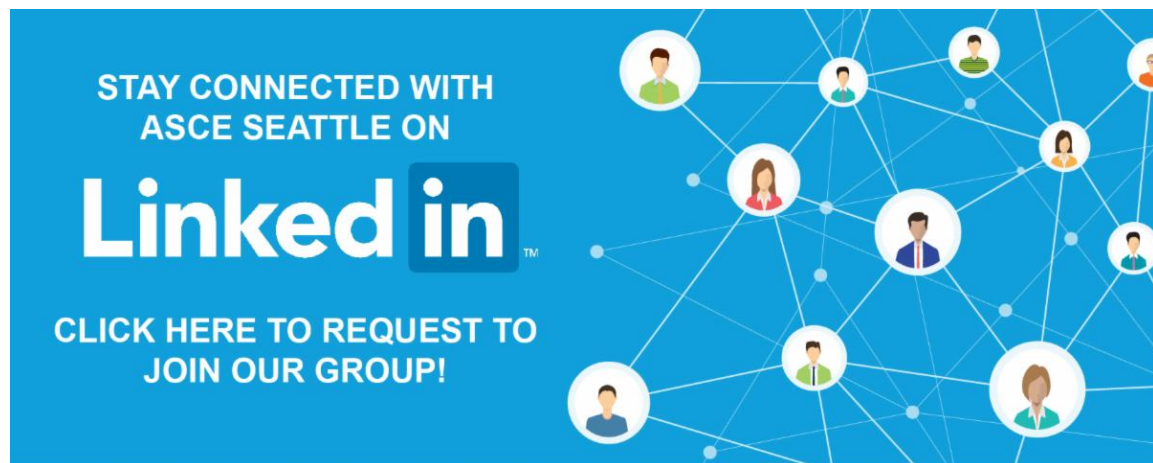
The North Branch is also seeking YMF volunteers to continue to maintain and grow it's YMF. Please contact Mark Rose, North Branch YMF President, at mrose@geoengineers.com for more information.

Legislative Committee

If you are interested in joining the [Legislative Affairs Committee](#), please reach out to legislative@seattleasce.org.

ASCE Seattle Section is searching for volunteers to assist with the Legislative Affairs Committee. The level of Involvement can vary and can include providing engineering judgement on current legislative issues to assisting with lobbying. The committee is interested in a Legislative Drive-In to Olympia during the 2020 WA State Legislative Session.

The Legislative Committee functions in the political arena with focus on federal, state, county or other governmental issues that are of interest to the civil engineering profession; such as university engineering budget considerations, issues that affect the practice of or employment of civil engineers, and environmental issues of significance to the profession. The committee reviews proposed legislation and comments on it with regards to its effect on the civil engineering profession and may also be called upon to testify at Legislative hearings or for other governmental committees. It is also responsible for disseminating information from the Architects and Engineers Legislative Council (AELC) pertaining to state legislation. The committee typically sends at least one representative to the Society's annual Legislative Fly-In in Washington D.C.



ASCE Seattle Job Board

Current Job Openings:

[Click to View Full Descriptions & How to Apply!](#)

Advertise your current open positions to ASCE Seattle members today for only \$75 for the first month and \$50 for each subsequent month.

[Email communications@seattleasce.org](mailto:communications@seattleasce.org) to learn more.

DID YOU KNOW?

All ASCE Seattle Members are always invited to join the Seattle Section Board Members at the monthly Board Meeting. Interested in attending? Check the [calendar on the ASCE Seattle website](#) for the meeting time and location and email president@seattleasce.org if you plan on joining us!



