

CIVIL SOURCE

ASCE UTAH SECTION NEWSLETTER

SEPTEMBER 2021 • ISSUE 1 • VOLUME 2



IN THIS ISSUE

- MEET THE NEW BRANCH LEADERSHIP
- BRANCH UPDATES
- ANNOUNCEMENTS



PRESIDENT'S MESSAGE

by Mark Chandler, PE, PG, CFM

Happy September to all of our members and others that may be reading this newsletter. This past summer seems like a blur to me and had a lot of fun to offer along the way. My family was very busy with different activities and we had many good experiences. As we all know, the need for engineering and construction in Utah has not slowed much with Covid and in many sectors has only quickened. This has made for some challenges for many of you to keep up with all we need to do. I hope everyone is doing well.

For those that don't know me, I love being an engineer. I think that one of the main reasons for this is that I love to learn. I love to learn new things, new ways to do things and to better understand other people and how they approach this awesome profession we are in. I live in Layton with my wife and three kids and we seem like we are constantly running to different activities.

Back in June we had our annual meeting in Logan, which was very well attended. I know most of the branches have also begun monthly meetings again, so please look forward to those opportunities. Part of the purpose of ASCE, aside from education, is the social interaction that we enjoy at these meetings. I have often heard different engineers say things like "I wish there was a way to just find out (insert engineering topic here) from other engineers".

Continued on Page 2

Continued from Page 1

ASCE and our monthly meetings provide that opportunity to rub shoulders with and discuss some of these topics or concerns. The more participation we have in these meetings, the stronger our profession will become. I would encourage everyone to take some time to think about what would be most helpful from ASCE for each of you and reach out to your branch leadership and let them know. As Section and Branch leadership, we want to make the society as beneficial to you as possible. That being said, I continue to learn about many benefits of being a member of ASCE. Reach out to co-workers and other Civil Engineers to invite them to participate and if any of you are interested in learning more about just why it is such a benefit, take a look. [ASCE member benefits](#) | [ASCE](#)

So far this year we have seen some of our best branch meetings in recent memory with the Wasatch Front Branch touring the new prison site (a 3-hour tour that many thought went way too fast) and the Central Utah Branch touring the Olmstead Power Plant that has recently been updated but still has some amazing historical features. Please pay attention to those invitations that come from your branches and take advantage of these different opportunities to learn new things and improve your ability to fulfill our responsibilities. My hope this year is that we can drive more involvement so that we can strengthen the society and help each of our members to become better civil engineers. In a state that is growing as fast as our, we need to stay as sharp as we can. Good luck to you all and I can't wait to see you all at the upcoming activities.

LEADERSHIP INTRODUCTION

Welcome to the 2021-22 leadership team for the Utah Section, Branches and Institutes. I know that many of us feel the stress of trying to keep up with our various responsibilities to family, work, and other activities and it can seem like a big thing to participate in ASCE leadership. While it does take some time and effort, the benefits that I have experienced from participating and rubbing shoulders with many of these individuals far outweigh anything I have given up to be part of it all. I hope everyone in the Section will consider engaging in these leadership and service opportunities and make your mark on the section and branches. We need everyone's help to take a great organization, and make it a true force for good in our profession and even in our communities. Without further ado, see the attached chart for this year's leadership. Take some time to reach out these individuals and get to know them. Thank them for serving, and ask how you can be involved.

ASCE UTAH 2020-2021 SECTION AND BRANCH LEADERSHIP						
ASCE UTAH SECTION	ASCE JUVENILE PROFESSIONAL BRANCH	ASCE JUVENILE PROFESSIONAL BRANCH	ASCE JUVENILE PROFESSIONAL BRANCH	ASCE JUVENILE PROFESSIONAL BRANCH	ASCE JUVENILE PROFESSIONAL BRANCH	ASCE JUVENILE PROFESSIONAL BRANCH
 MARK CHANDLER President	 WESTON BELLON President	 BITTON TVETEN President	 MITCHELL SMITH President	 DANE HURST President	 TAYLOR HALL President	 BRIAN PETERSON Chair
 LEAH H. BACKLUND President Elect	 JACOB AMES President Elect	 CHAD KITCHEN President Elect	 PHOTO COMING SOON JOSHUA REIDHEAD President Elect	 RHETT BEAZER President Elect	 SABRINA MCCUEN President Elect	 RYAN MAW Vice Chair
 LAYTON ASMUS Secretary/Treasurer	 THOMAS HILL Secretary/Treasurer	 DIONDO TOLLINGER Secretary/Treasurer	 BRANDON ROGERS Secretary/Treasurer	 TRINITY STOUT Secretary/Treasurer	 KRISTA RIESTER Treasurer	 CONRAD GUYMON Chair
 ELIZABETH WHITLOCK Secretary/Treasurer Elect	 SAMUEL ODD Past President	 MICHELLE HAACKE Past President	 ZACH HERBERT Past President	 CLINTON MERRELL Past President	 SABRINA MCCUEN Secretary	 CONRAD GUYMON Chair
 DARREN BURTON Past President	 SAMUEL ODD Past President	 MICHELLE HAACKE Past President	 ZACH HERBERT Past President	 CLINTON MERRELL Past President	 SABRINA MCCUEN Secretary	 CONRAD GUYMON Chair
 FARAMARZ SAFAZADEH Past President						

E: woorv@seinfelder.com
P: 307.231.1993

E: thill@sunrise-eng.com
P: 435.563.3734

E: ckitchen@conteches.com
P: 801.851.0420

E: mitch@provo.org
P: 801.852.4731

E: trinitystout@alphaengineering.com
P: 435.428.6500

E: brianp@getharc.com
P: 801.567.2006

E: conradg@crengineers.com
P: 801.222.0922 ext 128

E: abraham@pergeecivil.com
P: 435.513.9696

CENTRAL UTAH BRANCH

"By: Mitchell Smith

We had a lunch and tour at the Olmsted Historical Hydroelectric Power Plant Campus in Orem. Daryl Devey, from CUWCD gave a tour and told stories about the over century's old site. We are grateful to CUWCD for hosting us.

The October Luncheon will be October 21 at 12pm. The location and speaker will be announced later.



YOUNG MEMBER FORUM

By: Taylor Hall

The most recent information we received about WRYMC in February is the following:

"Due to the continued uncertainty and volatility of COVID, the 2022 Multi-Region Leadership Conferences which were originally scheduled for January and February will be held virtually as one large event.

The dates are still under consideration, but we're aiming for mid February. The virtual conference will include similar programming to past MRLC's and we are confident that you will find it valuable as ASCE local group leaders.

All three groups, (Section/Branch/Institute, Student Chapter, and Younger Member Leaders) that normally attend the MRLCs will be invited. In addition, the Younger Member Councils are looking to host their own meetings in the summer. Also the Committee on Student Members will incorporate the programming content from the Workshop for Student Chapter Leaders at the Student Region Symposia."

As far as our local chapter, we're planning a fall BBQ that will be hosted towards the end of October and the PE Review sessions are ongoing.



WASATCH FRONT BRANCH

By Britton Tveten, PE

The Wasatch Front Branch has started out this fall with a tour of the new Utah State Correctional Facility by Dave Dillman. This tour was over 3 hours long and we maybe say a third of the prison. It was fascinating how much technology and innovative design was used to build such a unique facility. Much of the concrete portions of the buildings were actually built off site and imported to the job site by truck. The gaps were then filled in with cinder blocks. Being a prison there were many design aspects such as plumbing, protection for the guards and other inmates, fire protection, and self-sufficiency that most of us never think of or consider on our designs.

The upcoming lunch presentations are the Salt Lake City sewer treatment plant and the Utah County Emergency Water Shed Project.

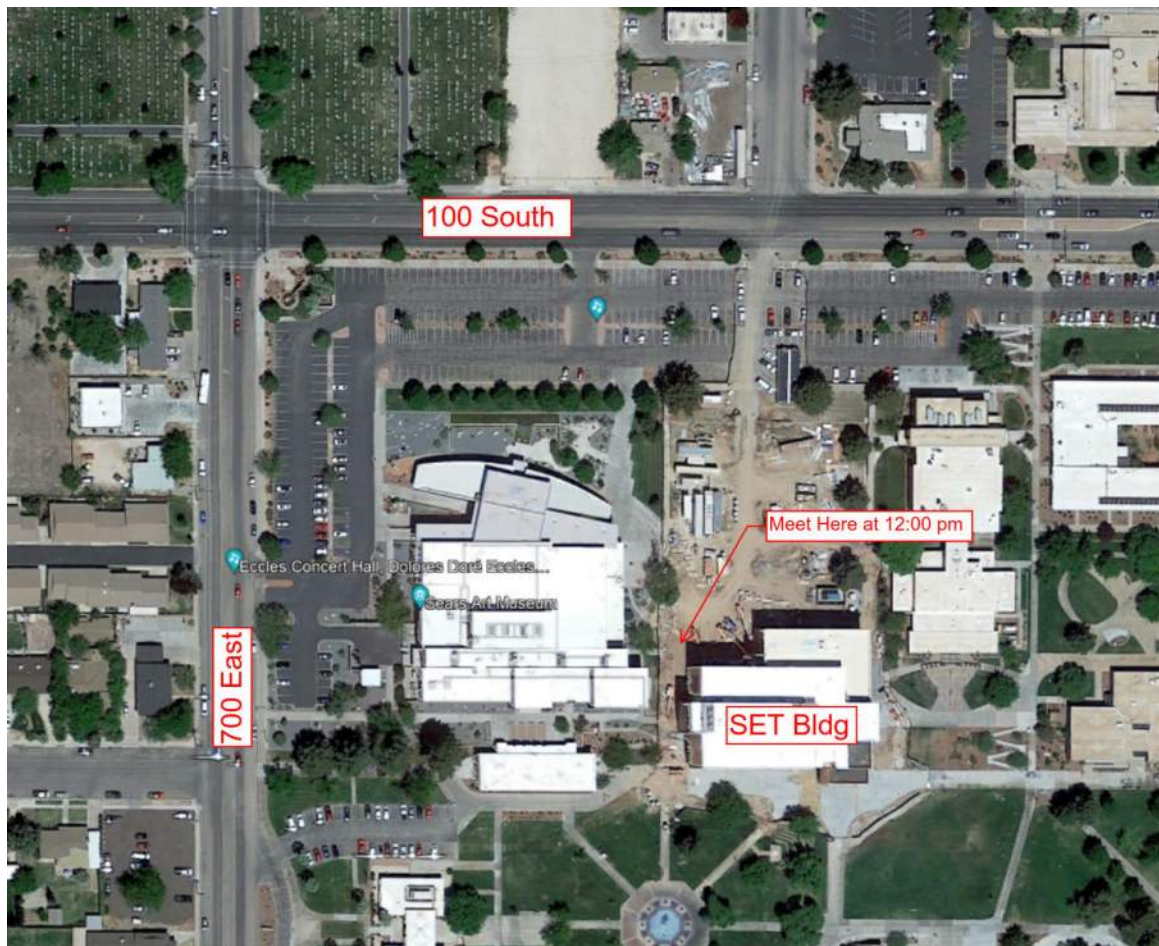
SOUTHERN UTAH BRANCH

By: Clinton Merrell

We are ready to start up our branch meetings for the 2021-2022 season! Our first luncheon of the year will be a tour of the new Science Engineering and Technology Building at Dixie State University. The University will give us a tour of their new Science Engineering and Technology ("SET") building and tell us about their current engineering programs. Lunch will be provided by the university, so lunch will be free this month, but please consider donating any amount for your tickets. Donations will be used to fund our branch scholarship fund and school STEM grant programs. Parking passes will be provided by the university (more details to come). The best place for parking is in the parking lot just north of the SET building off of 100 South. We will plan on meeting everyone outside on the Northwest corner of the building at 12:00 PM. We look forward to seeing you all there.

Register for the luncheon at Eventbrite:

<https://www.eventbrite.com/e/asce-so-utah-branch-september-luncheon-tickets-174013287427>



NORTHERN UTAH BRANCH

by Weston Bellon

We are excited to get going on this year's activities! For September we will have our opening social on Thursday September 24 at 6:00 at Lundstrom Park. There will be food and fun activities for the whole family. Starting in October, we will be hosting our monthly training meetings on the third Thursday of the month at noon. We have been instructed to conduct these meetings virtually until at least the beginning of the year, so look for meeting invites to be sent out via email.

We look forward to seeing you all soon.

ASCE Northern Utah Branch Leadership



UTAH GEO INSTITUTE UPDATE

By Brian Peterson, PE & Ryan May, PE

The Utah Geo-Institute is excited for another year with a number of interesting events on the horizon. The purpose of the Geo-Institute chapter is to attract and increase member participation through access to G-I speakers (locally and nationally), coordinate meetings and short courses, work with other groups and organizations (AEG, SEAU, UGS, EERI, and others), facilitate networking (students, professors, and practitioners), and increase public perception of the importance of geo-professionals. As you work with and participate with peers and colleagues, please keep us posted of upcoming geoprofessional related events or activities that we can share with the chapter. We look forward to the exciting year ahead!

SEI UPDATE

By: Conrad Guymon

There are a few SEI Events to be aware of and add to your calendars.

Electrical Transmission and Substation Structures Conference Oct 2-6, 2022 in Orlando – SEI Futures Fund student scholarship available. This is a specialty conference and is well attended by industry reps. Note that student scholarships are available to attend. More information can be found at <https://www.etsconference.org/>

Structures Congress 2022 – April 20-23, 2022 in Atlanta. Yes, this is in person after two years of virtual events. It's next spring (which may seem like an eternity away) but it will come up fast. There are scholarships available for Student and Young Professional (35 and younger) made possible by the ASCE Futures Fund. The application deadline is December 5, 2021. Find information at <https://www.structurescongress.org/program/scholarships>

The ASCE Standards Series is continuing this year. ASCE/SEI 8 Specification for the Design of Cold-Formed Stainless Steel Structural Members is scheduled for November 18, 2021. More information can be found here: <https://collaborate.asce.org/integratedstructures/sei-standards> The next edition of ASCE 7 will be covered next year.

Take a minute to share why your membership is valuable, and you can score some incentives. Find more about ASCE Member referral program incentives https://info.asce.org/mgam?utm_campaign=mgam-2019-lp&GUID=559ea0a2-3c22-44a0-a5a9-2f0b001fa449

Best wishes for the coming year.

Announcements

OPENING SOCIAL



Free food, fun & games for the whole family

**Friday September 24th 6 PM
At Lundstrom Park**

1600 E 1350 N, Logan, UT

RSVP to:

<https://forms.gle/GuW4Kct5eVkTCtEJA>



Fall 2021 - PE Review Courses

PE Exam Review Courses

Join us for our 2021 Fall PE Review Course! Don't miss out on this great opportunity to be prepared for the PE Exam this fall! The courses will be offered virtually or in person at the UDOT Region 2 Office at 2010 S 2760W SLC! For information on how to register, please follow the link below. For additional questions and concerns, please reach out to Anna Roberts.

Regular Registration

ASCE Members: \$300

Non-ASCE Members: \$400

[ASCE YMF PE Review Courses Registration](#)

[ASCE YMF PE Review Courses Schedule](#)

Fall 2021 PE Review Course Schedule

September - October

Tuesday and Thursdays 6:00-9:30PM

Topics & Tentative Date

Kickoff Meeting/ Structures Breadth - Tuesday, 9/7/2021

Structures Depth- Thursday, 9/9/2021

Geotechnical Breadth - Tuesday, 9/14/2021

Geotechnical Depth -Thursday, 9/16/2021

Water Resources - Tuesday, 9/28/2021

Environmental - Thursday, 9/30/2021

Construction Breadth - TBD

Construction Depth - TBD

Transportation Breadth - TBD

Transportation Depth - Thursday, 10/14/2021

Dates will be updated as they are scheduled but are subject to change.

Registering for the 2021 Fall PE Exam

The PE Exam will be held on **October 21 and 22** this fall. The test will be administered over a two day period this year due to the circumstances surrounding COVID-19. For those who are registered, you will be informed of the testing day you have been assigned based on your selected discipline. For those who haven't registered, you have until August 26, 2021. Due to COVID-19, the testing procedures are dynamic and subject to change daily. Please reference the links below and emails from NCEES regarding potential changes.

[NCEES REGISTRATION](#)

[NCEES COVID-19 NEWS](#)

Contact: Anna Roberts | anna@scgpnash.com

